

WHITE &
BROOKS
CHICHESTER

Offers in the Region Of £310,000

The Pitcroft • Chichester • West Sussex

“Mid Terrace House”



- ❖ Well Presented
- ❖ Situated Close To Chichester City Centre
- ❖ 3 Bedrooms
- ❖ Lounge
- ❖ Kitchen/Diner
- ❖ 4 Piece Family Bathroom
- ❖ Downstairs Cloakroom
- ❖ Enclosed Rear Garden
- ❖ No Forward Chain

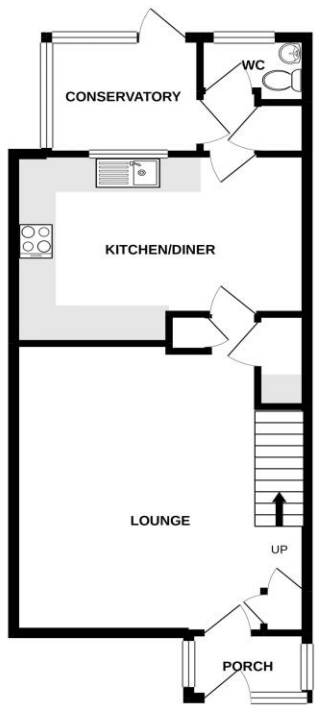
About The Property

White & Brooks are delighted to offer for sale, this well presented three Bedroom mid-terrace house, situated close to Chichester City Centre with all its' amenities and within easy reach of excellent road links. The accommodation briefly comprises to the ground floor, Entrance Porch, Lounge, Kitchen/Diner, Conservatory and Cloakroom. To the first floor are two double Bedrooms, a further single Bedroom and a four piece family Bathroom. The property further benefits from an enclosed rear garden and is offered for sale with no forward chain. An internal viewing is essential to appreciate all the property has to offer.

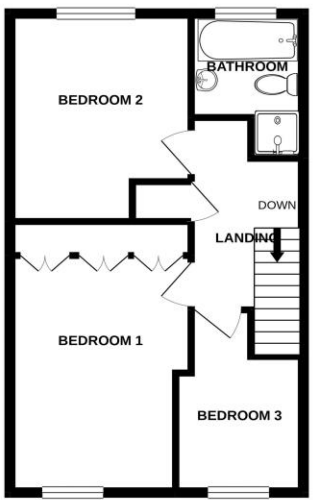


Floorplan and EPC

GROUND FLOOR
547 sq.ft. (50.8 sq.m.) approx.



1ST FLOOR
431 sq.ft. (40.0 sq.m.) approx.



TOTAL FLOOR AREA: 978 sq.ft. (90.9 sq.m.) approx.

Whilst every attempt has been made to ensure the accuracy of the floorplan contained here, measurements of doors, windows, rooms and any other items are approximate and no responsibility is taken for any error, omission or mis-statement. This plan is for illustrative purposes only and should be used as such by any prospective purchaser. The services, systems and appliances shown have not been tested and no guarantee as to their operability or efficiency can be given.
Made with floorplan 02022



Room Details

Entrance Porch

Lounge 16' 6" x 15' 9" (5.02m x 4.8m)

Kitchen/Diner 10' 9" x 15' 9" (3.28m x 4.8m)

Cloakroom

Conservatory 6' 8" x 7' 11" (2.02m x 2.42m)

Stairs To:-

First Floor Landing

Bedroom 1 13' 6" x 8' 8" (4.11m x 2.65m)

Bedroom 2 11' 10" x 9' 8" (3.6m x 2.95m)

Bedroom 3 10' 5" x 6' 7" (3.18m x 2.01m)

4 Piece Family Bathroom

Enclosed Rear Garden

