



- 4 Bedrooms
- Convenient Location
- Extended Property
- Viewings Recommended

11 Cryersook Close, Monkspath, B90 4UW

VIEWINGS ARE STRONGLY ADVISED at this EXTENDED semi-detached family home situated on the popular Monkspath development. The property is ideally located for Hillfield Park, Shelley Farm shops, Monkspath Surgery, Monkspath Infant & Junior School and Alderbrook School, Solihull town centre with its fantastic amenities to include the renowned Touchwood Court, the Midlands motorway and Birmingham International Airport.



Property Description

DETAILS

The accommodation in brief affords hallway, spacious lounge, extended dining room with French doors to the rear garden, fitted kitchen and to complete the ground floor is a bedroom with shower room facilities.

To the first floor there are three good sized bedrooms and a family bathroom.

OUTSIDE

To the front, the property benefits from a drive allowing the parking of up to 3 vehicles. Whilst to the rear is a mature garden with lawn and patio area.

VIEWINGS

At short notice with DM & Co. Homes on 0121 775 0101 or by email sales@dmandcohomes.co.uk.





GENERAL INFORMATION

Tenure: We are advised by the vendor that the property is Freehold with vacant possession upon completion. However, we would advise that you check this with your legal advisor before exchanging contracts.

Services: All mains services are connected to the property. However, it is advised that you confirm this at point of offer.

Local Authority: Solihull Metropolitan Borough Council.



OTHER SERVICE

DM & Co are pleased to offer the following services:-

Residential Lettings: If you are considering letting your property, please contact the office on 0121 775 0101.

Mortgage Services: If you would like advice on the best mortgages available, please contact us on 0121 775 0101.



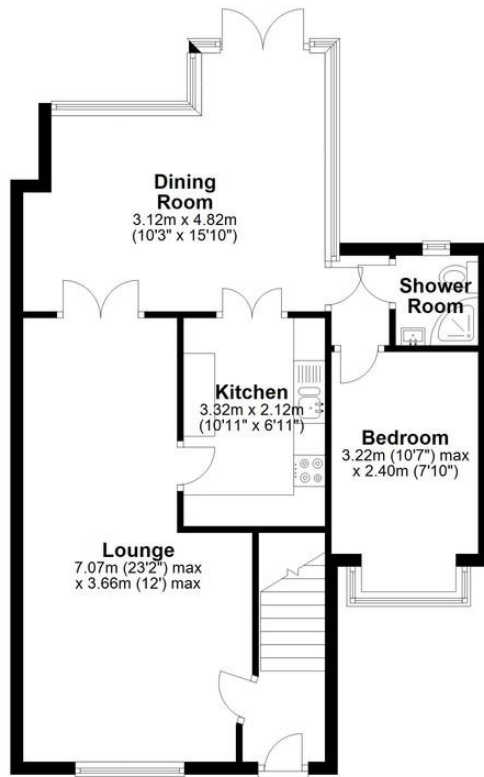
WANT TO SELL YOUR PROPERTY?

Call DM & Co. Homes on 0121 775 0101 to arrange your FREE no obligation market appraisal and find out why we are Solihull's fastest growing Estate Agency.

Agents Note: Whilst every care has been taken to prepare these sales particulars, they are for guidance purposes only. All measurements are approximate and for general guidance purposes only and whilst every care has been taken to ensure their accuracy, they should not be relied upon and potential buyers are advised to recheck the measurements

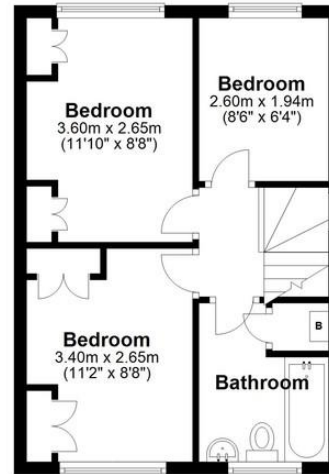
Ground Floor

Approx. 62.8 sq. metres (675.5 sq. feet)



First Floor

Approx. 33.3 sq. metres (358.7 sq. feet)



Total area: approx. 96.1 sq. metres (1034.2 sq. feet)

Please note this plan is for illustration purposes only, this is not intended to be a measured survey or comply with RICS guidelines. All measurements are for the actual floor area and are approximate so should be checked by prospective buyers/tenants. No responsibility is taken for any error, omission, or mis-statement. Plan produced using PlanUp.