

Need a Mortgage in principle
to make offers? Call us now
for quick assistance!
0121 775 0101



Do you need to sell?
Start your journey now!
Call us we can help.
01564 777 314



WOODSTOCK CRESCENT

Dorridge, B93

SCAN FOR MORE INFO
SIZE - 1725Sq Ft
TENURE - Freehold
COUNCIL TAX - Solihull Metropolitan Borough Council - F
BROADBAND - Upload Max 1000Mbps
Download Max 1800Mbps
EPC - D - 68
PARKING - Driveway & Single Garage
FLOODRISK - Very Low
SERVICES - Mains
COVENANTS - N/A

Situated in a quiet cul-de-sac, this detached house offers a perfect blend of space and modern living, making it an ideal choice for families. This property not only offers generous living space but also benefits from excellent school catchments, making it a fantastic opportunity for families seeking a comfortable and convenient lifestyle in a desirable location.

FEATURES

- Spacious Detached Family Home
- Bright Lounge
- Stunning Open Plan Breakfast Kitchen/Dining/Family Room
- Separate Utility Room
- Principal Bedroom with Fitted Wardrobes & En-Suite
- Three Further Good Sized Double Bedrooms
- Modern Family Bathroom
- Rear Garden
- Driveway Parking & Single Garage
- Walking Distance to Dorridge Village Centre

Are you an investor
interested in expanding your
portfolio?

Call **01564 777 314** to provide your
investment criteria for alerts.



SCAN TO **VIEW OUR**
WEEKLY FILMS &
SUBSCRIBE

Sneak Peeks

Every week, we unveil "Sneak Peeks," a feature showcasing exclusive properties before they hit Rightmove and other platforms.

The Landlord Club

Join our Landlord Club for weekly updates on legislation, market trends, and our Letting Director's 'Investment Pick of the Week' for optimal ROI.

HTSPMD

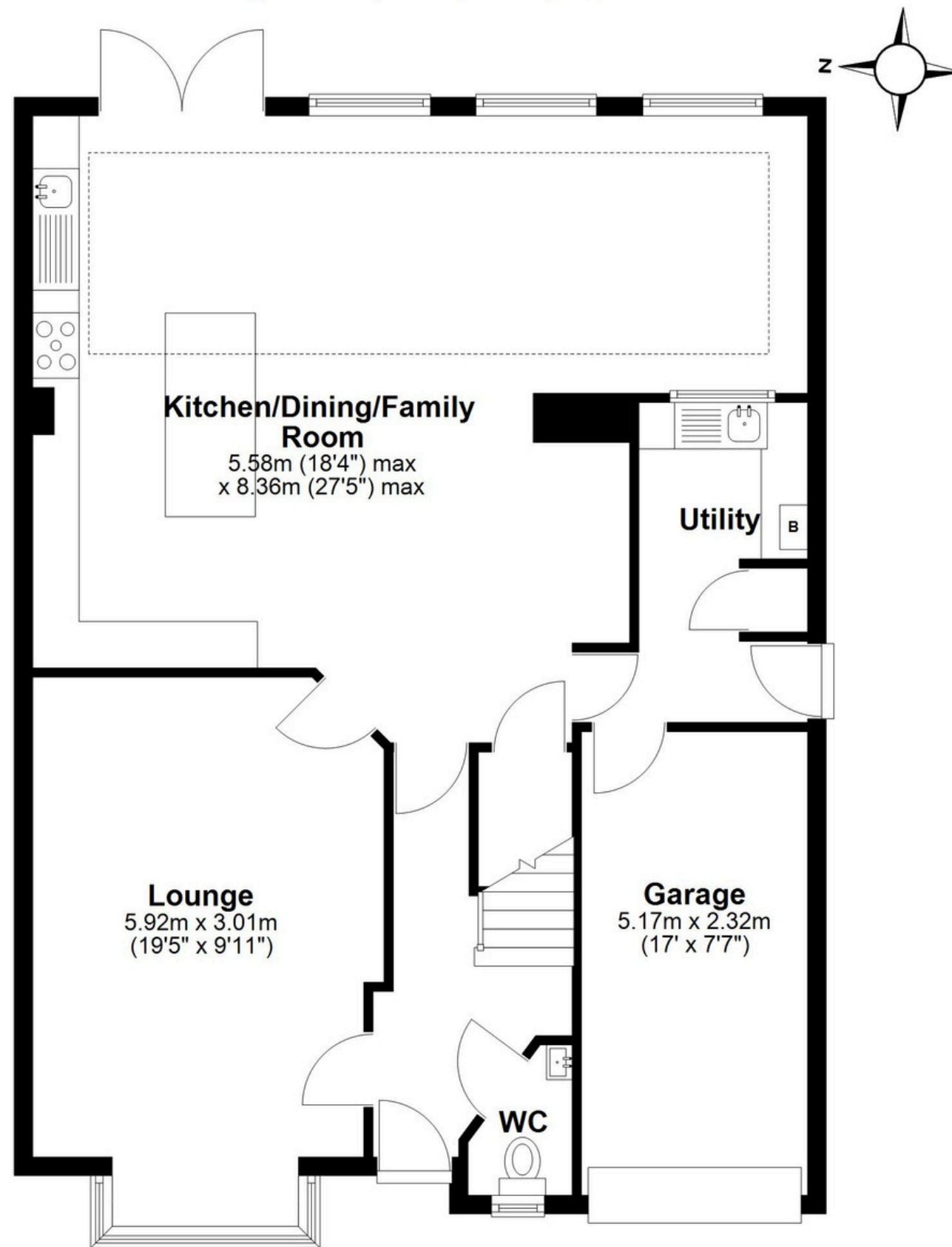
Tune into 'How's The Solihull Property Market Dom' weekly for a quick, insightful snapshot of the market.

The Mortgage Update

Get weekly insights and the best deals with our Mortgage Update, your shortcut to navigating the complex mortgage landscape confidently.

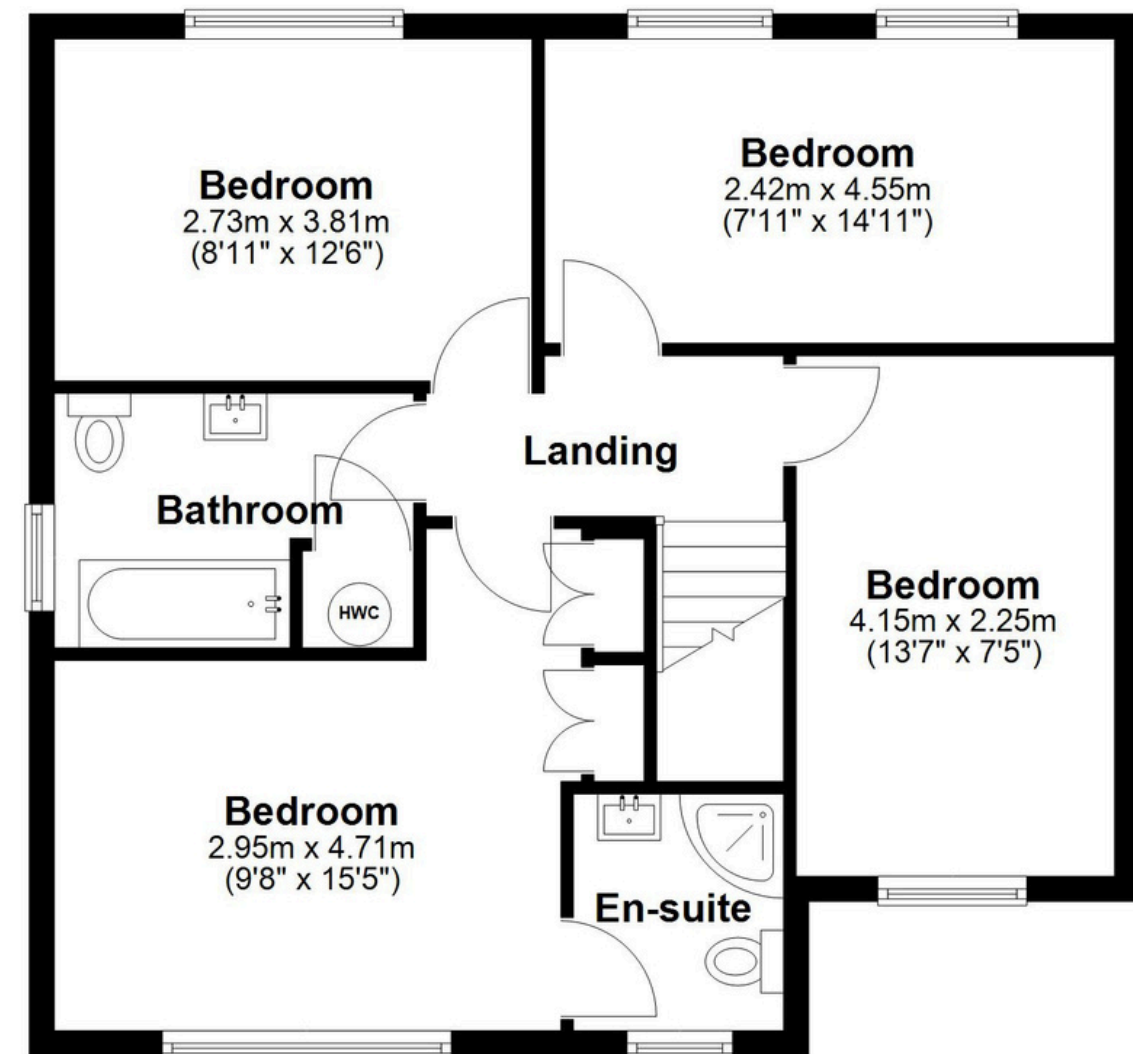
Ground Floor

Approx. 96.6 sq. metres (1040.0 sq. feet)



First Floor

Approx. 63.7 sq. metres (685.4 sq. feet)



Total area: approx. 160.3 sq. metres (1725.4 sq. feet)

This floor plan is for illustration purposes only, this is not intended to be a measured/scaled survey or comply with RICS guidelines. All measurements (including total floor area) openings, orientation and floor area are approximate. No details are guaranteed, they cannot be relied upon for any purpose and do not form part of any agreement. A party must rely upon its own inspection(s). No responsibility is taken for any error, omission, or mis-statement.
Plan produced using PlanUp.