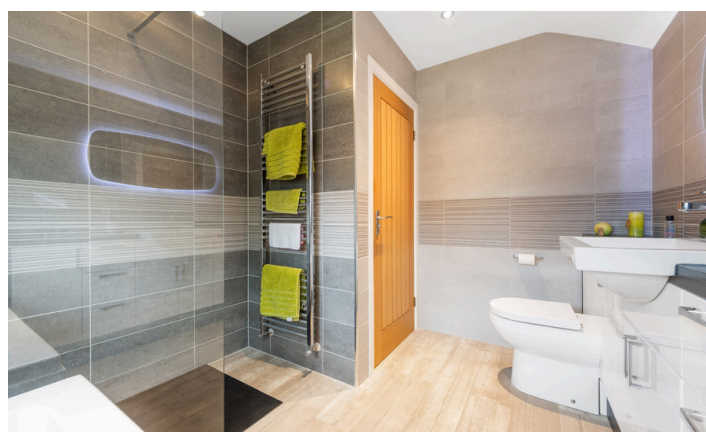


Need a Mortgage in principle to make offers? Call us now for quick assistance!  
0121 775 0101



Do you need to sell? Start your journey now! Call us we can help.  
0121 775 0101



**SCAN FOR MORE INFO**  
**SIZE** - 1726 Sq Ft  
**TENURE** - Freehold  
**COUNCIL TAX** - Solihull MBC - E  
**BROADBAND** - Upload Max 1000 Mbps  
 Download Max 1000 Mbps  
**MOBILE** - Three O2 Vodaphone  
**EPC** - F - 36  
**PARKING** - For Numerous Cars  
**FLOODRISK** - Very Low  
**SERVICES** - Mains  
**COVENANTS** - N/A

## DOVEHOUSE LANE

Guide Price £550,000

Welcome to this charming detached house located on Dovehouse Lane. This property boasts three reception rooms, perfect for entertaining guests or simply relaxing with your family. With four bedrooms, there is plenty of space for everyone to enjoy. Built in the 1920s, this house exudes character and history, offering a unique living experience.

### FEATURES

- Traditional Detached Property
- Lounge with Conservatory
- Separate Dining Room
- Fitted Breakfast Kitchen with Large Utility Room
- 3/4 Bedrooms
- Modern Four Piece Bathroom
- South Facing Rear Garden
- Ample Driveway Parking
- Single Garage
- Convenient Location

Are you an investor interested in expanding your portfolio?

Call 0121 775 0101 to provide your investment criteria for alerts.



SCAN TO VIEW OUR WEEKLY FILMS & SUBSCRIBE

### Sneak Peeks

Every week, we unveil "Sneak Peeks," a feature showcasing exclusive properties before they hit Rightmove and other platforms.

### The Landlord Club

Join our Landlord Club for weekly updates on legislation, market trends, and our Letting Director's 'Investment Pick of the Week' for optimal ROI.

### HTSPMD

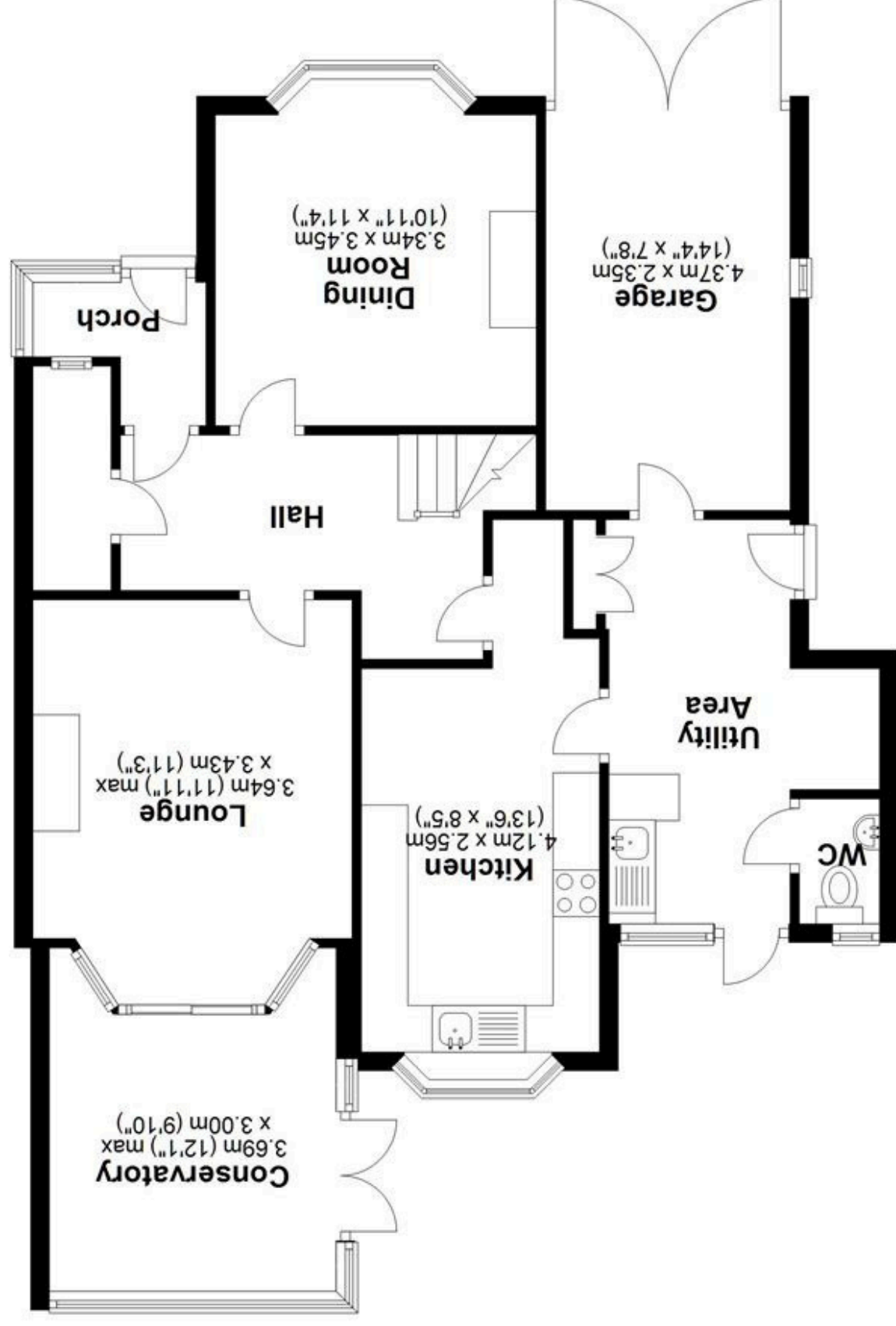
Tune into 'How's The Solihull Property Market Dom' weekly for a quick, insightful snapshot of the market.

### The Mortgage Update

Get weekly insights and the best deals with our Mortgage Update, your shortcut to navigating the complex mortgage landscape confidently.

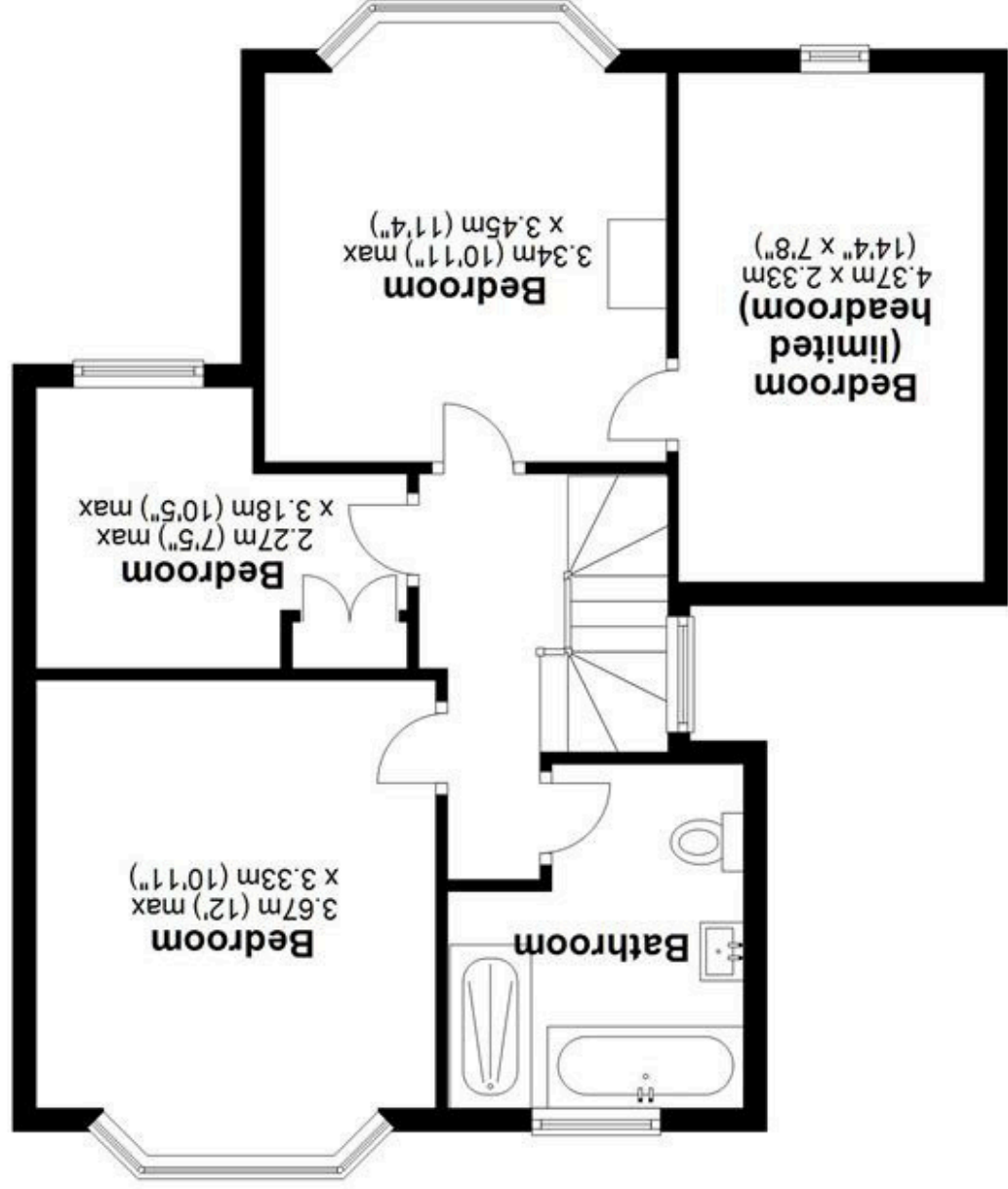


**Ground Floor**  
Approx. 74.0 sq. metres (796.7 sq. feet)



**Total area: approx. 129.7 sq. metres (1395.6 sq. feet)**

**First Floor**  
Approx. 55.6 sq. metres (598.9 sq. feet)



Please note this plan is for illustration purposes only, this is not intended to be a measured survey or comply with RICS guidelines. All measurements are approximate and should be checked by prospective buyers/tenants. No responsibility is taken for any error, omission, or mis-statement.  
Plan produced using PlanUp.