

Need a Mortgage in principle to make offers? Call us now for quick assistance!  
0121 775 0101



Do you need to sell? Start your journey now! Call us we can help.  
0121 775 0101



**SCAN FOR MORE INFO**  
**SIZE** - 1091 Sq Ft  
**TENURE** - Freehold  
**COUNCIL TAX** - Solihull MBC - d  
**BROADBAND** - Upload Max 1000 Mbps  
 Download Max 1000 Mbps  
**MOBILE** - EE Three O2 Vodaphone  
**EPC** - C - 70  
**PARKING** - For at least 3 Cars  
**FLOODRISK** - Very Low  
**SERVICES** - Mains  
**COVENANTS** - N/A

Are you an investor interested in expanding your portfolio?

Call 0121 775 0101 to provide your investment criteria for alerts.

## HENLEY CRESCENT

Offers in the region of £375,000

A fantastic opportunity to acquire a substantial family home which must be viewed to appreciate the accommodation on offer. The property is ideally located for excellent local schools, Jaguar Land Rover, Solihull town centre and train station, Birmingham International Airport and the Midlands motorway networks.

### FEATURES

- Extended Semi-Detached Property
- Tastefully Presented Throughout
- Through Lounge/Dining Room with Conservatory
- Extended Kitchen
- Guest Cloakroom
- Three Bedrooms
- Family Bathroom
- Driveway Parking
- Single Garage
- Private Rear Garden
- Convenient Location

### Sneak Peeks

Every week, we unveil "Sneak Peeks," a feature showcasing exclusive properties before they hit Rightmove and other platforms.

### The Landlord Club

Join our Landlord Club for weekly updates on legislation, market trends, and our Letting Director's 'Investment Pick of the Week' for optimal ROI.

### HTSPMD

Tune into 'How's The Solihull Property Market Dom' weekly for a quick, insightful snapshot of the market.

### The Mortgage Update

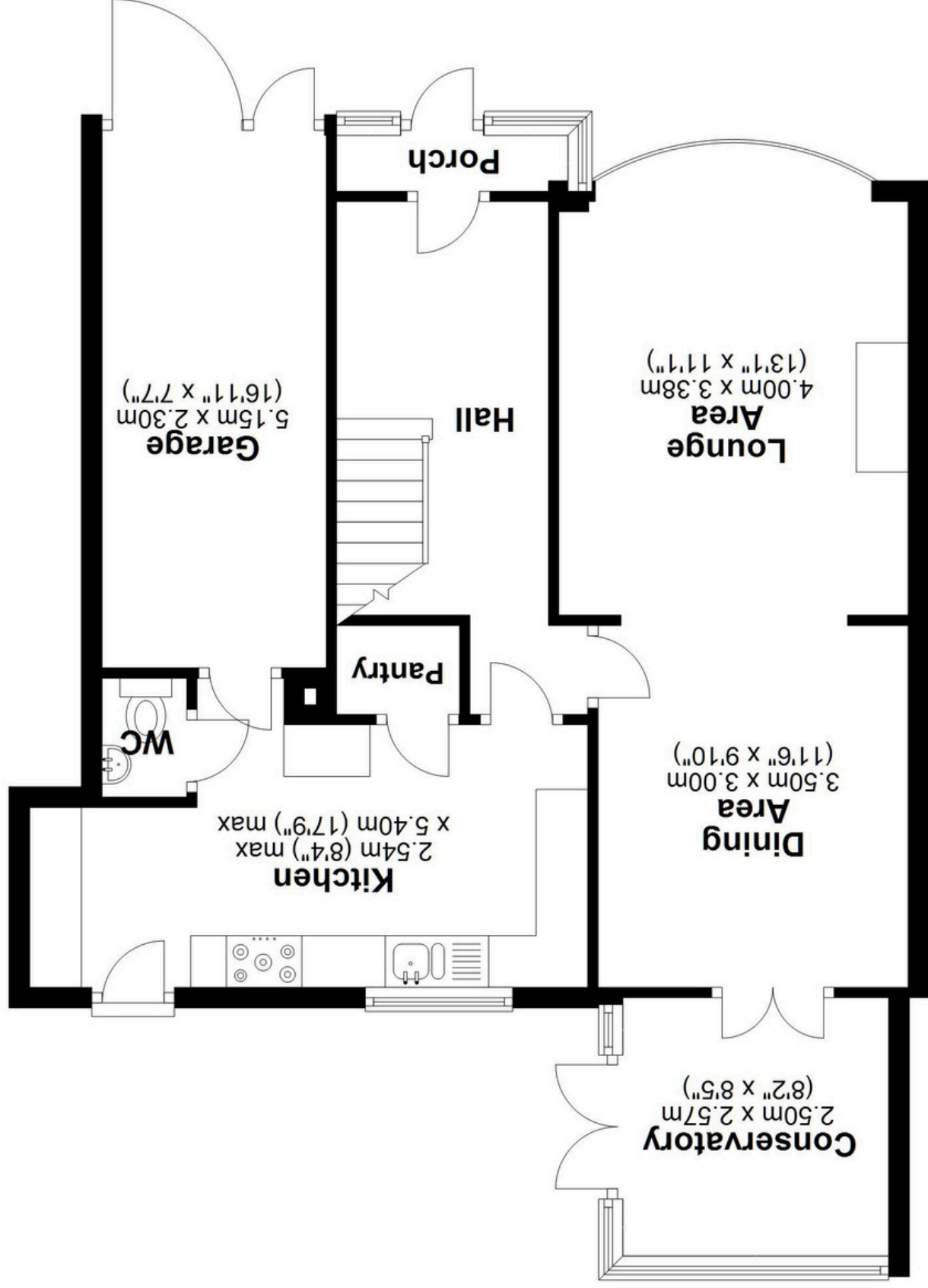
Get weekly insights and the best deals with our Mortgage Update, your shortcut to navigating the complex mortgage landscape confidently.



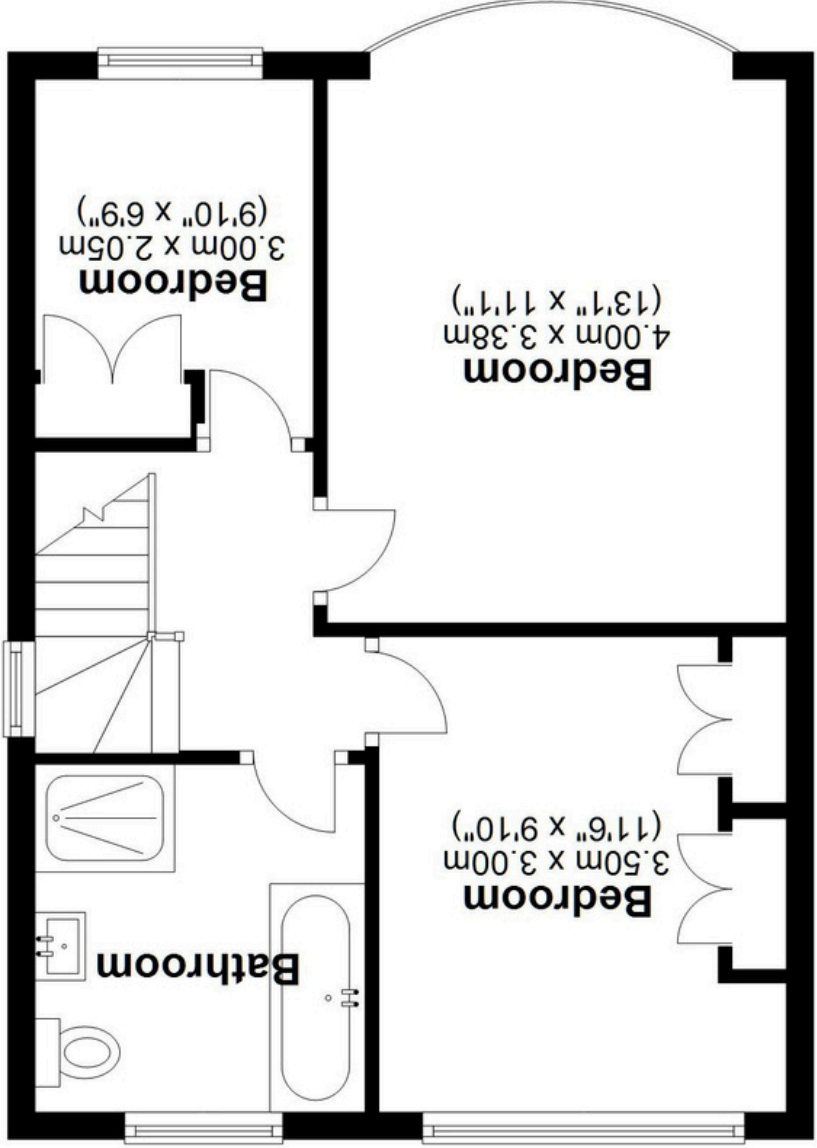
SCAN TO VIEW OUR WEEKLY FILMS & SUBSCRIBE



**Ground Floor**  
Approx. 58.4 sq. metres (628.3 sq. feet)



**First Floor**  
Approx. 43.1 sq. metres (463.4 sq. feet)



Total area: approx. 101.4 sq. metres (1091.8 sq. feet)

Please note this plan is for illustration purposes only, this is not intended to be a measured survey or comply with RICS guidelines. All measurements are approximate and should be checked by prospective buyers/tenants. No responsibility is taken for any error, omission, or mis-statement.  
Plan produced using PlanUp.