

Need a Mortgage in principle
to make offers? Call us now
for quick assistance!
0121 775 0101



Do you need to sell?
Start your journey now!
Call us we can help.
0121 775 0101



MEREVALE ROAD

Solihull, B92

SCAN FOR MORE INFO
SIZE - 1 Sq Ft
TENURE - Freehold
COUNCIL TAX - Solihull Metropolitan Borough Council - D
BROADBAND - Upload Max 1000MBps
Download Max 1800MBps
MOBILE - EE Three O2 Vodafone
EPC - C - 69
PARKING - For at least 3 Cars
FLOODRISK - Very Low
SERVICES - Mains
COVENANTS - N/A

Are you an investor
interested in expanding your
portfolio?

Call **0121 775 0101** to provide your
investment criteria for alerts.

This semi-detached house presents a delightful opportunity for families seeking a spacious and beautifully presented home and has been tastefully decorated to create a warm and inviting atmosphere. This home is perfect for those looking for a blend of modern living and traditional charm in a sought-after location.

FEATURES

- A Beautifully Presented Semi-Detached Family Home
- Kitchen/Breakfast Room
- Open Plan Living/Dining Room
- Delightful Conservatory
- Guest Cloakroom
- Three Double Bedrooms
- Four Piece Family Bathroom
- Private South Facing Rear Garden
- Driveway Parking
- Conveniently Location



SCAN TO **VIEW OUR**
WEEKLY FILMS &
SUBSCRIBE

Sneak Peeks

Every week, we unveil "Sneak Peeks," a feature showcasing exclusive properties before they hit Rightmove and other platforms.

The Landlord Club

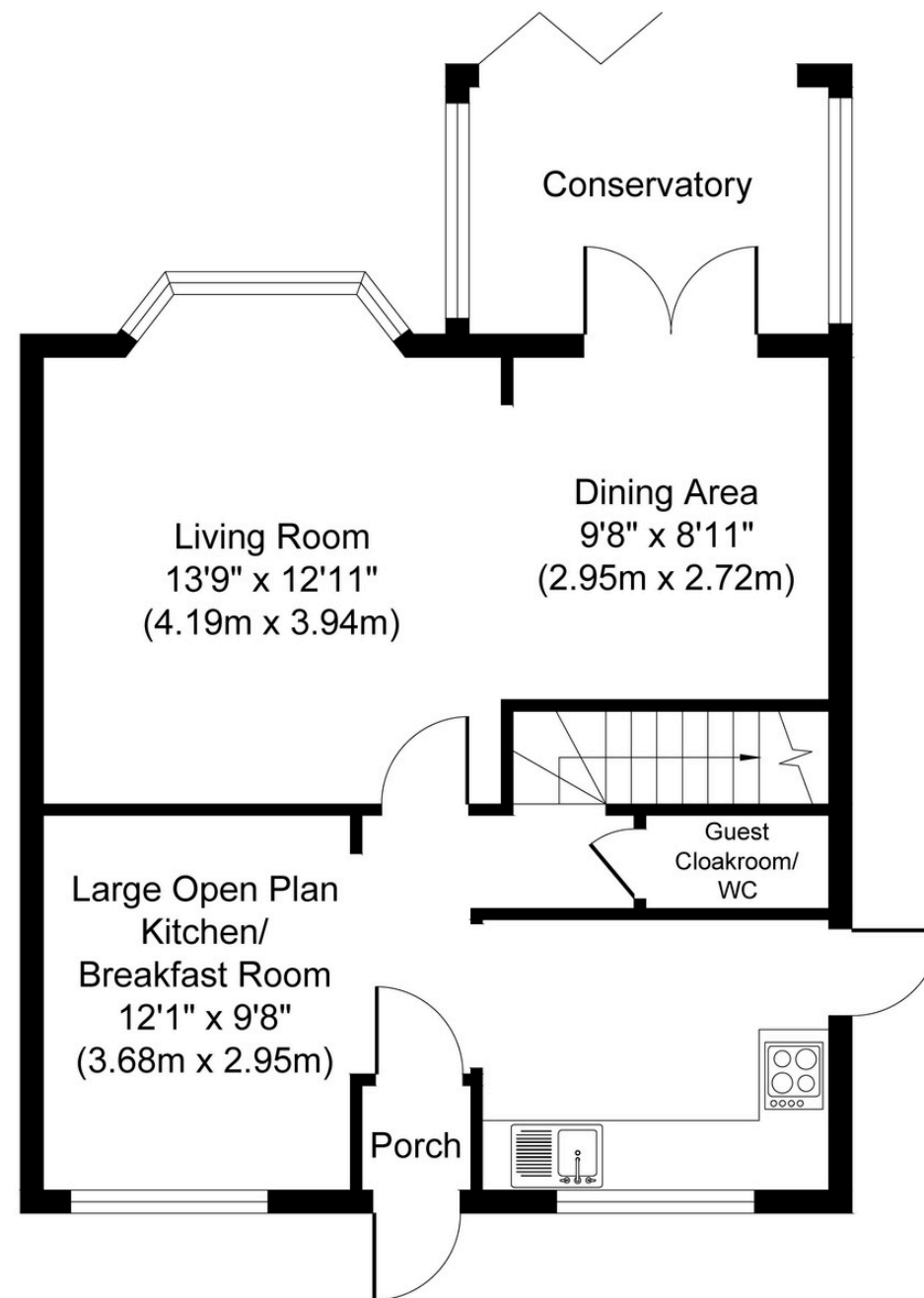
Join our Landlord Club for weekly updates on legislation, market trends, and our Letting Director's 'Investment Pick of the Week' for optimal ROI.

HTSPMD

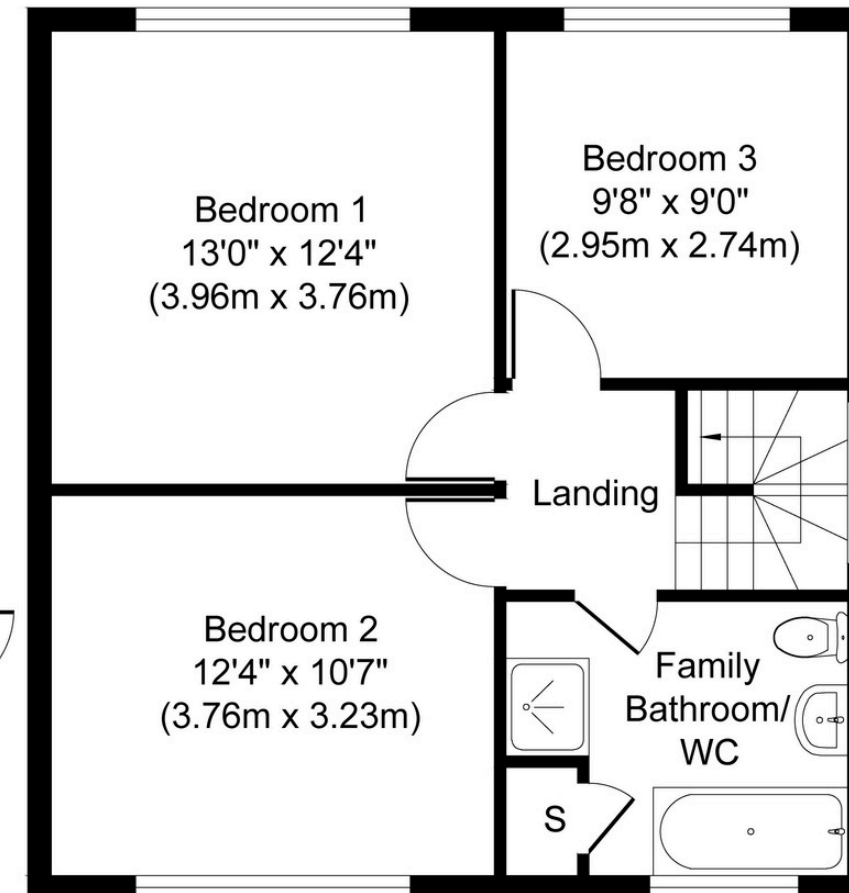
Tune into 'How's The Solihull Property Market Dom' weekly for a quick, insightful snapshot of the market.

The Mortgage Update

Get weekly insights and the best deals with our Mortgage Update, your shortcut to navigating the complex mortgage landscape confidently.



Ground Floor
Approximate Floor Area
612 sq. ft
(56.82 sq. m)



First Floor
Approximate Floor Area
522 sq. ft
(48.53 sq. m)

Whilst every attempt has been made to ensure the accuracy of the floor plan contained here, measurements of doors, windows, rooms and any other items are approximate and no responsibility is taken for any error, omission, or mis-statement. The measurements should not be relied upon for valuation, transaction and/or funding purposes. This plan is for illustrative purposes only and should be used as such by any prospective purchaser or tenant.

The services, systems and appliances shown have not been tested and no guarantee as to their operability or efficiency can be given.

Copyright V360 Ltd 2025 | www.houseviz.com