

Need a Mortgage in principle  
to make offers? Call us now  
for quick assistance!  
**0121 775 0101**

DM&Co.  
SALES & LETTINGS



Do you need to sell?  
Start your journey now!  
Call us we can help.  
**0121 775 0101**

DM&Co.  
SALES & LETTINGS



**SCAN FOR MORE INFO**  
**SIZE** - 2046 Sq Ft  
**TENURE** - Freehold  
**COUNCIL TAX** - Solihull Metropolitan Borough Council - F  
**BROADBAND** - Upload Max 1000Mbps  
Download Max 1800Mbps  
**EPC** - D - 64  
**PARKING** - Ample Driveway Parking  
**FLOODRISK** - Very Low  
**SERVICES** - Mains  
**COVENANTS** - N/A

**WIDNEY LANE**  
**Solihull, B91**

Situated on the sought-after Widney Lane, this substantial traditional detached house offers a perfect blend of charm and modern living, making it an ideal home for growing families. Viewings are highly recommended to appreciate the accommodation on offer.

**FEATURES**

- A Spacious Traditional Detached Property
- Tastefully Presented Throughout
- Lounge/Dining Room with Large Conservatory
- Fitted Breakfast Kitchen
- Ground Floor Bedroom 5/ Snug/Home Office with En-Suite Shower Room
- Principal Bedroom with Dressing Area & En-Suite Shower Room
- Two Further First Floor Double Bedrooms & Family Bathroom
- Second Floor Bedroom
- Private Rear Garden
- Ample Driveway Parking
- Convenient Location

Are you an investor  
interested in expanding your  
portfolio?

**Call 0121 775 0101 to provide your investment criteria for alerts.**



SCAN TO **VIEW OUR**  
**WEEKLY FILMS &**  
**SUBSCRIBE**

**Sneak Peeks**

Every week, we unveil "Sneak Peeks," a feature showcasing exclusive properties before they hit Rightmove and other platforms.

**The Landlord Club**

Join our Landlord Club for weekly updates on legislation, market trends, and our Letting Director's 'Investment Pick of the Week' for optimal ROI.

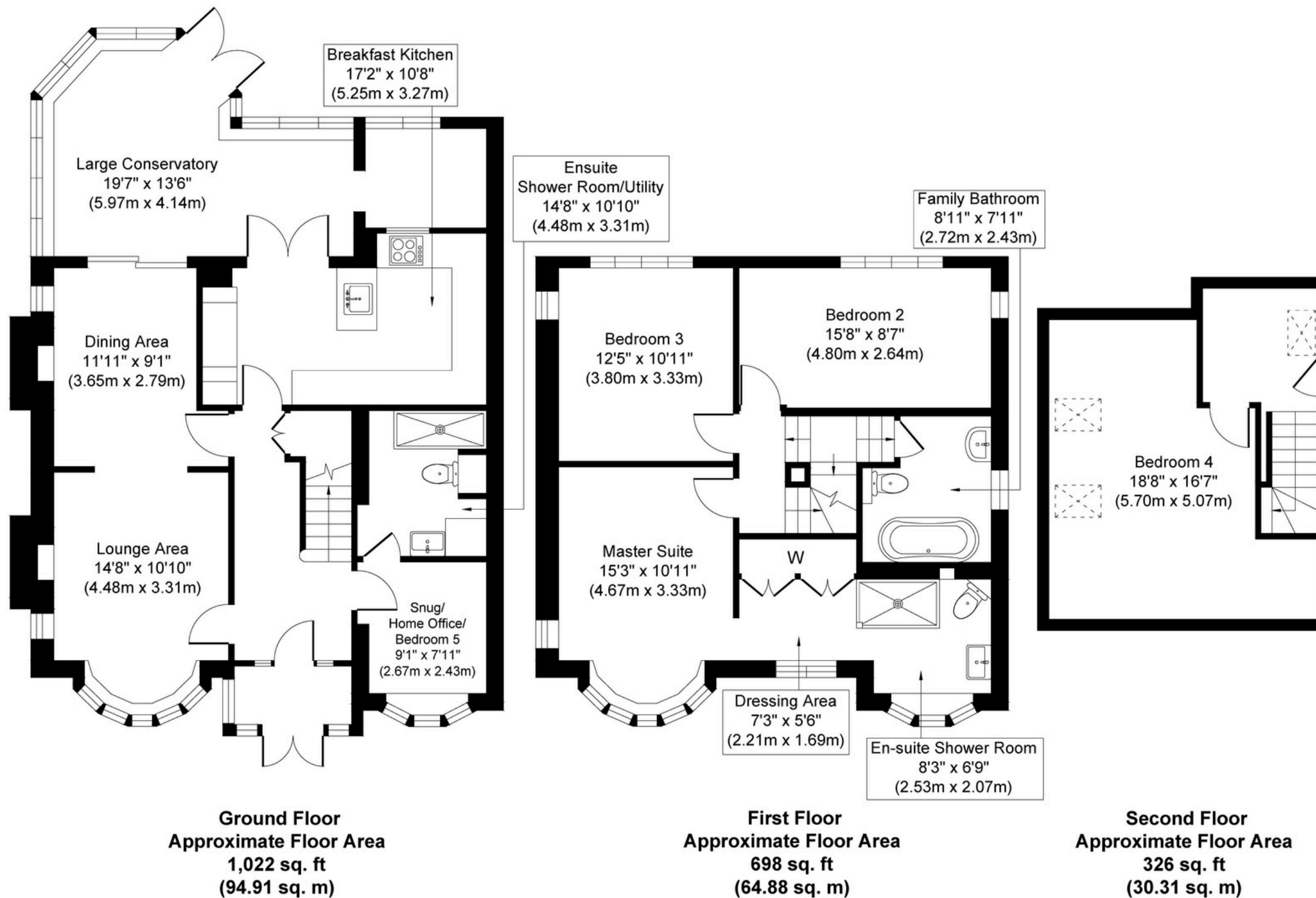
**HTSPMD**

Tune into 'How's The Solihull Property Market Dom' weekly for a quick, insightful snapshot of the market.

**The Mortgage Update**

Get weekly insights and the best deals with our Mortgage Update, your shortcut to navigating the complex mortgage landscape confidently.





Whilst every attempt has been made to ensure the accuracy of the floor plan contained here, measurements of doors, windows, rooms and any other items are approximate and no responsibility is taken for any error, omission, or mis-statement. The measurements should not be relied upon for valuation, transaction and/or funding purposes. This plan is for illustrative purposes only and should be used as such by any prospective purchaser or tenant.

The services, systems and appliances shown have not been tested and no guarantee as to their operability or efficiency can be given.

Copyright V360 Ltd 2025 | [www.houseviz.com](http://www.houseviz.com)