

Need a Mortgage in principle to make offers? Call us now for quick assistance!
0121 775 0101



Do you need to sell? Start your journey now! Call us we can help.
01564 777 314 (Opt 4)



7 Rockingham Close

Offers Over £1,350,000



SCAN FOR MORE INFO

SIZE - 3195 Sq Ft
TENURE - Freehold
COUNCIL TAX - Solihull MBC F
BROADBAND - Upload Max 100 Mbps
 Download 1000 Mbps
MOBILE - EE, Three, O2, Vodafone
EPC - C
PARKING - In and out driveway
FLOODRISK - Very Low
SERVICES - Mains
COVENANTS - N/A

Are you an investor interested in expanding your portfolio?

Call 01564 777 314 to provide your investment criteria for alerts.

Impressive five bedroom detached executive home, spanning three floors with multiple living spaces, and an open-plan kitchen/diner. Ideal for families, it includes a top-floor suite and a landscaped south-facing garden with a dedicated home office. Perfect for those seeking space, comfort, and modern conveniences in a fantastic location

FEATURES

- Modern Extended Five Bedroom Home
- Three En Suites and Family Bathroom
- Four Reception Rooms
- Fantastic Open Plan Kitchen
- Underfloor Heating to Ground Floor
- Quiet Cul De Sac Location
- Beautifully Presented Throughout
- In and Out Driveway
- Southerly Facing Garden

Sneak Peeks

Every week, we unveil "Sneak Peeks," a feature showcasing exclusive properties before they hit Rightmove and other platforms.

The Landlord Club

Join our Landlord Club for weekly updates on legislation, market trends, and our Letting Director's 'Investment Pick of the Week' for optimal ROI.

HTSPMD

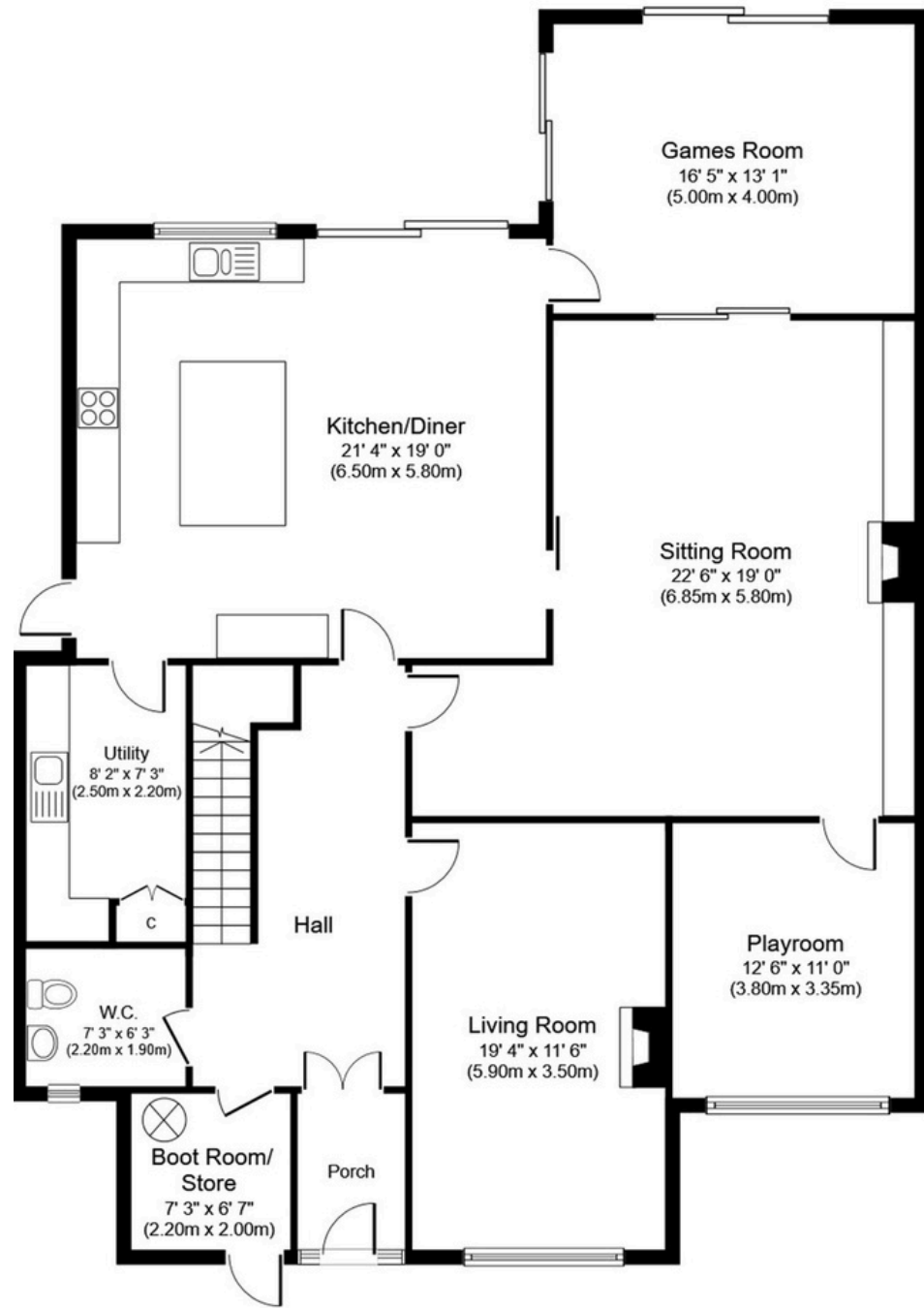
Tune into 'How's The Solihull Property Market Dom' weekly for a quick, insightful snapshot of the market.

The Mortgage Update

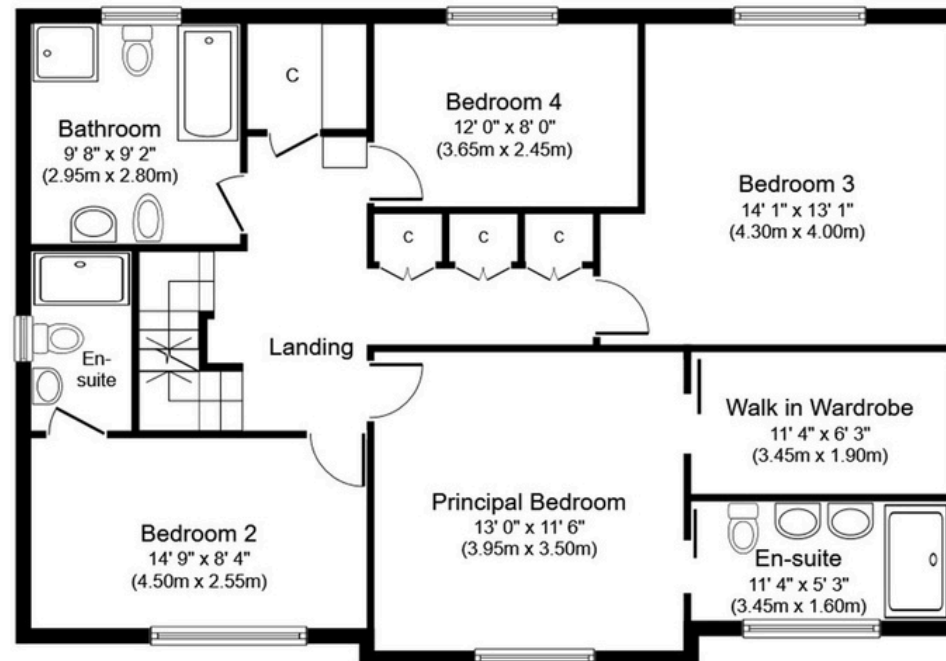
Get weekly insights and the best deals with our Mortgage Update, your shortcut to navigating the complex mortgage landscape confidently.



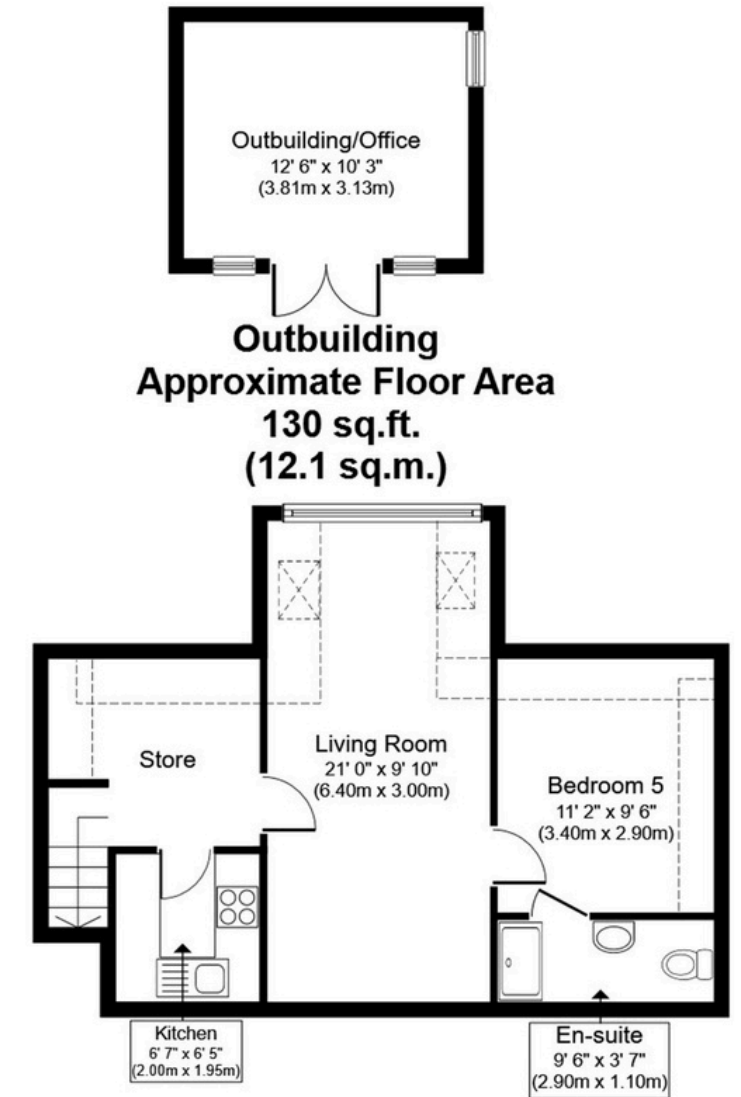
SCAN TO VIEW OUR WEEKLY FILMS & SUBSCRIBE



Ground Floor
Approximate Floor Area
1,709 sq. ft.
(158.8 sq. m.)



First Floor
Approximate Floor Area
1,008 sq.ft.
(93.7 sq.m.)



Second Floor
Approximate Floor Area
478 sq.ft.
(44.4 sq.m.)

Whilst every attempt has been made to ensure the accuracy of the floor plan contained here, measurements of doors, windows, rooms and any other items are approximate and no responsibility is taken for any error, omission, or mis-statement. The measurements should not be relied upon for valuation, transaction and/or funding purposes. This plan is for illustrative purposes only and should be used as such by any prospective purchaser or tenant.

The services, systems and appliances shown have not been tested and no guarantee as to their operability or efficiency can be given.