

Need a Mortgage in principle
to make offers? Call us now
for quick assistance!
0121 775 0101



Do you need to sell?
Start your journey now!
Call us we can help.
0121 775 0101



SCAN FOR MORE INFO
SIZE - 2004 Sq Ft
TENURE - Freehold
COUNCIL TAX - Solihull Metropolitan Borough Council - G
BROADBAND - Upload Max 1000Mbps
Download Max 1800Mbps
MOBILE - Three
EPC - C - 69
PARKING - For Numerous Cars
FLOODRISK - Very Low
SERVICES - Mains
COVENANTS - N/A

Are you an investor
interested in expanding your
portfolio?

**Call 0121 775 0101 to provide your
investment criteria for alerts.**

2 Oaken Drive

Solihull, B91 1RJ
Offers in the Region of £825,000

Set in the desirable Oaken Drive, this splendid detached house offers a perfect blend of space, comfort and modern living. The property is beautifully presented throughout and is ideally located within walking distance of Solihull town centre, making it a prime choice for families and professionals alike.

FEATURES

- Spacious Detached Residence
- Popular Location in Solihull
- Dual Aspect Lounge Leading to Formal Dining Room
- Modern Breakfast Kitchen
- Utility Room with Access to Study/Play Room
- Large Principal Bedroom with Fitted Wardrobes & En-Suite Shower Room
- Three Further Good Sized Bedrooms All With Fitted Wardrobes
- Family Bathroom
- Private Rear Garden
- Ample Driveway Parking & Double Garage



Sneak Peeks

Every week, we unveil "Sneak Peeks," a feature showcasing exclusive properties before they hit Rightmove and other platforms.

The Landlord Club

Join our Landlord Club for weekly updates on legislation, market trends, and our Letting Director's 'Investment Pick of the Week' for optimal ROI.

HTSPMD

Tune into 'How's The Solihull Property Market Dom' weekly for a quick, insightful snapshot of the market.

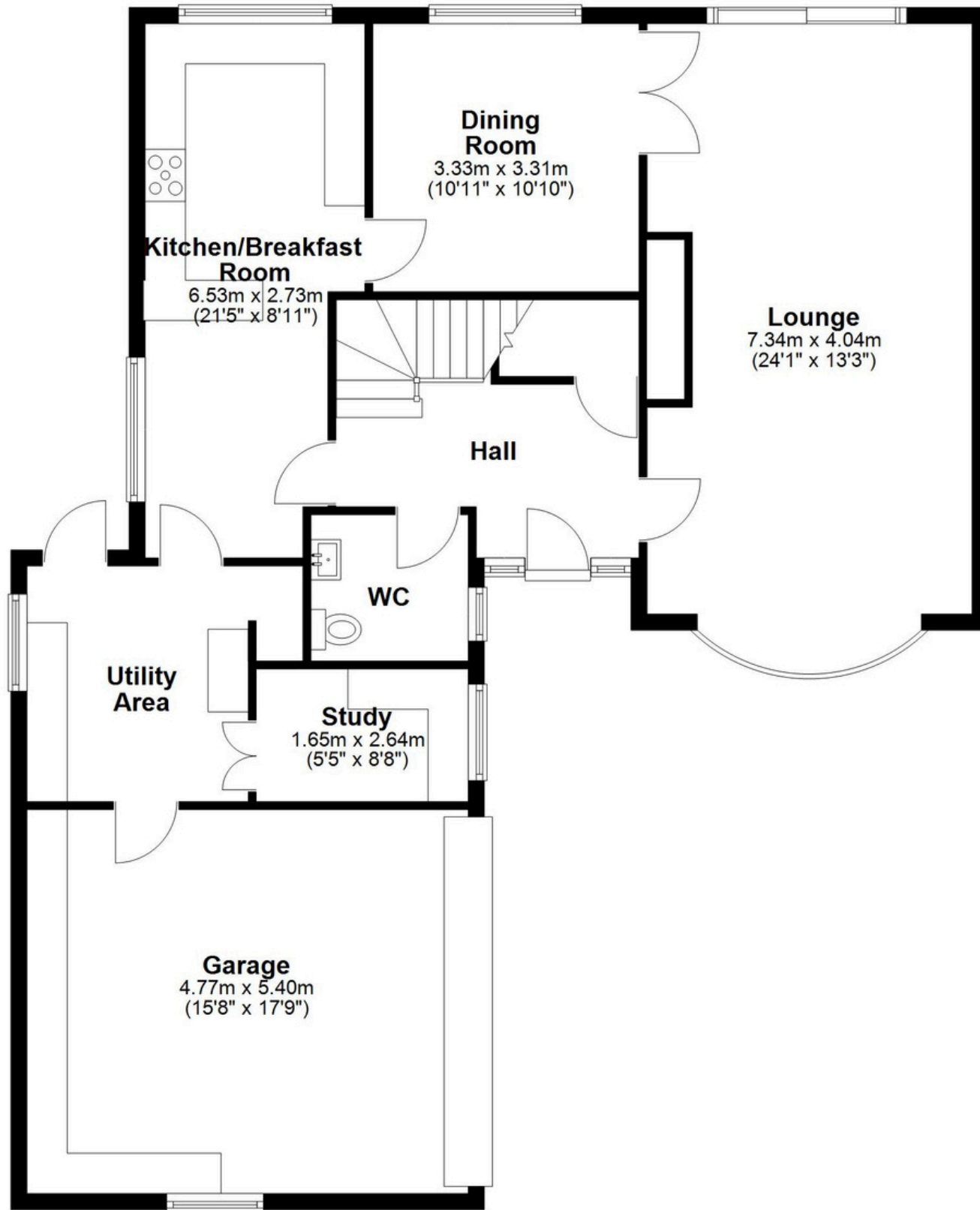
The Mortgage Update

Get weekly insights and the best deals with our Mortgage Update, your shortcut to navigating the complex mortgage landscape confidently.

SCAN TO **VIEW OUR**
WEEKLY FILMS &
SUBSCRIBE

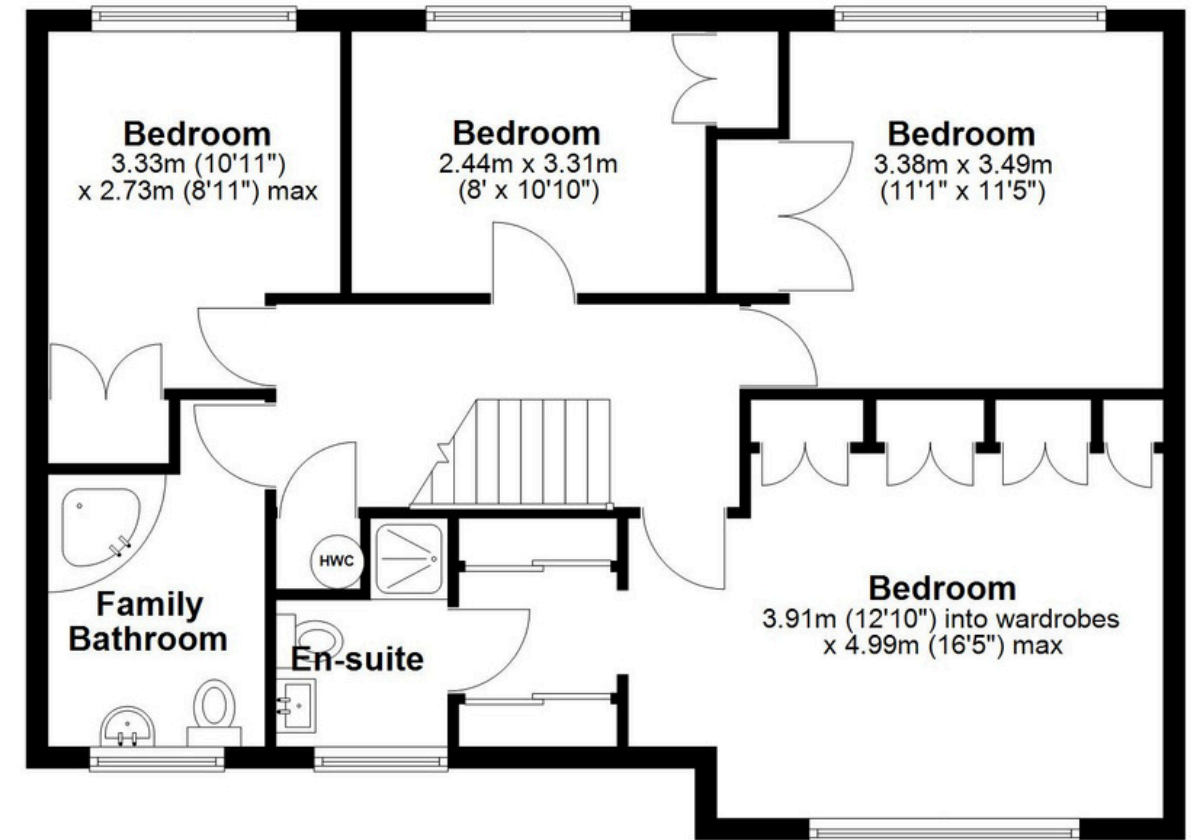
Ground Floor

Approx. 114.0 sq. metres (1227.1 sq. feet)



First Floor

Approx. 72.3 sq. metres (777.7 sq. feet)



Total area: approx. 186.3 sq. metres (2004.8 sq. feet)

This floor plan is for illustration purposes only, this is not intended to be a measured/scaled survey or comply with RICS guidelines. All measurements (including total floor area) openings, orientation and floor area are approximate. No details are guaranteed, they cannot be relied upon for any purpose and do not form part of any agreement. A party must rely upon its own inspection(s). No responsibility is taken for any error, omission, or mis-statement.

Plan produced using PlanUp.