

Need a Mortgage in principle to make offers? Call us now for quick assistance!
0121 775 0101



Do you need to sell? Start your journey now! Call us we can help.
0121 775 0101



THE MANOR

Offers over £350,000



SCAN FOR MORE INFO
SIZE - 1146 Sq Ft
TENURE - Leasehold with 108 years remaining
SERVICE CHARGE - £2,442 per annum
COUNCIL TAX - Solihull MBC - E
BROADBAND - Upload Max 1000 Mbps
 Download Max 1000 Mbps
MOBILE - EE O2 Vodaphone
EPC - C - 80
PARKING - Single Garage & One Off Road Parking Space
FLOODRISK - Very Low
SERVICES - Mains
COVENANTS - N/A

An elegant two bedroom ground floor apartment boasting spacious living areas, en-suites and a well-maintained breakfast kitchen. Located on the sought after St. Bernard's Road, this property is within walking distance of schools, amenities and travel links. Offered with no upward chain.

FEATURES

- Magnificent Two-Bedroom Ground Floor Apartment
- Large Living Room/Diner with Stunning Feature Fireplace
- Well Maintained Breakfast/Kitchen with Integrated Appliances
- Utility Area and Guest W/C
- Two Double Bedrooms
- Bedrooms Benefitting from En-Suites and Built-In Wardrobes
- One Off-Road Parking Space and Single Garage
- Secure Gated Development
- Walking Distance to Travel Links & Amenities
- No Upward Chain

Are you an investor interested in expanding your portfolio?

Call 0121 775 0101 to provide your investment criteria for alerts.

Sneak Peeks

Every week, we unveil "Sneak Peeks," a feature showcasing exclusive properties before they hit Rightmove and other platforms.

HTSPMD

Tune into 'How's The Solihull Property Market Dom' weekly for a quick, insightful snapshot of the market.

The Landlord Club

Join our Landlord Club for weekly updates on legislation, market trends, and our Letting Director's 'Investment Pick of the Week' for optimal ROI.

The Mortgage Update

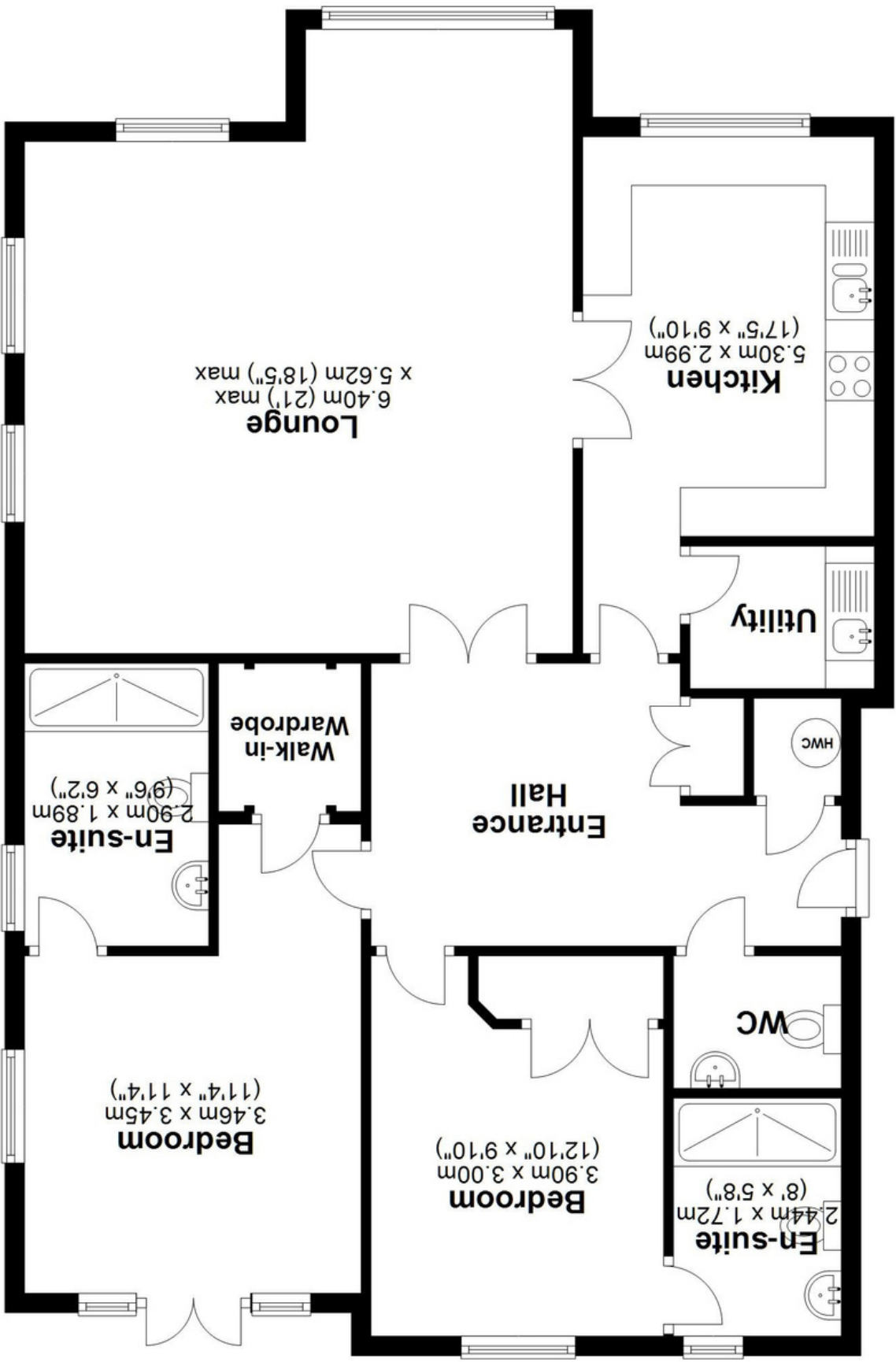
Get weekly insights and the best deals with our Mortgage Update, your shortcut to navigating the complex mortgage landscape confidently.



SCAN TO VIEW OUR WEEKLY FILMS & SUBSCRIBE



Floor Plan
Approx. 106.5 sq. metres (1146.6 sq. feet)



Total area: approx. 106.5 sq. metres (1146.6 sq. feet)

This floor plan is for illustration purposes only, this is not intended to be a measured/scaled survey or comply with RICS guidelines. All measurements (including total floor area) openings, orientation and floor area are approximate. No details are guaranteed, they cannot be relied upon for any purpose and do not form part of any agreement. A party must rely upon its own inspection(s). No responsibility is taken for any error, omission, or mis-statement.

Plan produced using PlanUp.