

Need a Mortgage in principle to make offers? Call us now for quick assistance!
0121 775 0101



Do you need to sell? Start your journey now! Call us we can help.
0121 775 0101



BARRINGTON ROAD

Purchase Price £375,000

SCAN FOR MORE INFO

SIZE - 1359 Sq Ft
TENURE - Freehold
COUNCIL TAX - Solihull MBC - D
BROADBAND - Upload Max 1000 Mbps
 Download Max 1000 Mbps
MOBILE - O2 Vodaphone
EPC - D - 66
PARKING - For at least 2 Cars
FLOODRISK - Very Low
SERVICES - Mains
COVENANTS - N/A

Discover a well maintained extended family home, boasting spacious accommodation in a convenient location. This residence promises comfort and functionality and benefits from a long rear private garden and driveway parking enhance the appeal, making it a delightful haven for families. Offered with NO UPWARD CHAIN.

FEATURES

- Extended Family Home
- Spacious Accommodation
- Breakfast Kitchen
- Bright Lounge with Bay Window
- Large Utility Room
- Guest Cloakroom
- Three First Floor Bedrooms
- Fourth Second Floor Bedroom
- Family Bathroom with Separate WC
- Block Paved Driveway
- Long Private Rear Garden

Are you an investor interested in expanding your portfolio?

Call 0121 775 0101 to provide your investment criteria for alerts.

Sneak Peeks

Every week, we unveil "Sneak Peeks," a feature showcasing exclusive properties before they hit Rightmove and other platforms.

HTSPMD

Tune into 'How's The Solihull Property Market Dom' weekly for a quick, insightful snapshot of the market.

The Landlord Club

Join our Landlord Club for weekly updates on legislation, market trends, and our Letting Director's 'Investment Pick of the Week' for optimal ROI.

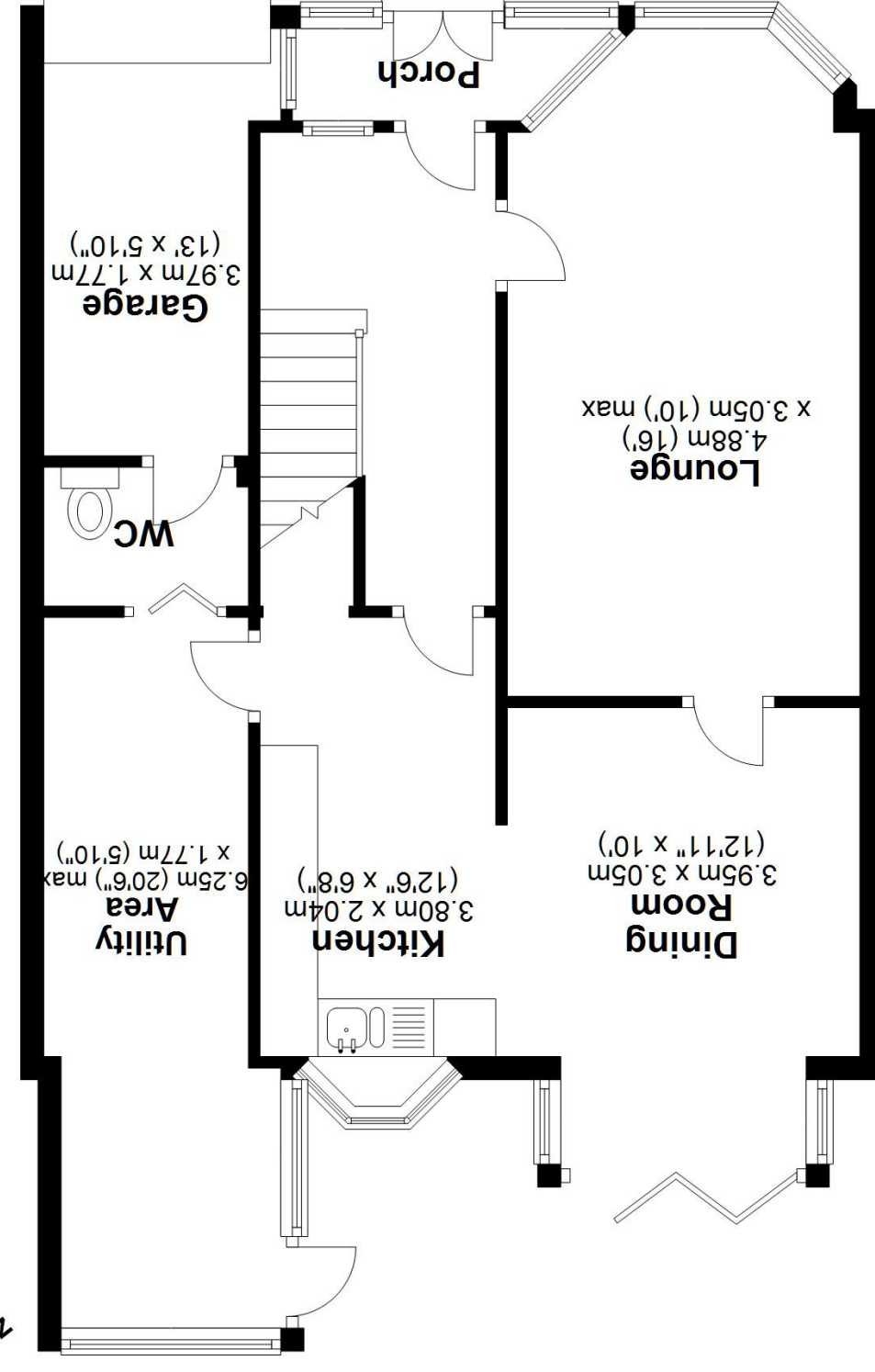
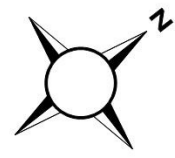
The Mortgage Update

Get weekly insights and the best deals with our Mortgage Update, your shortcut to navigating the complex mortgage landscape confidently.

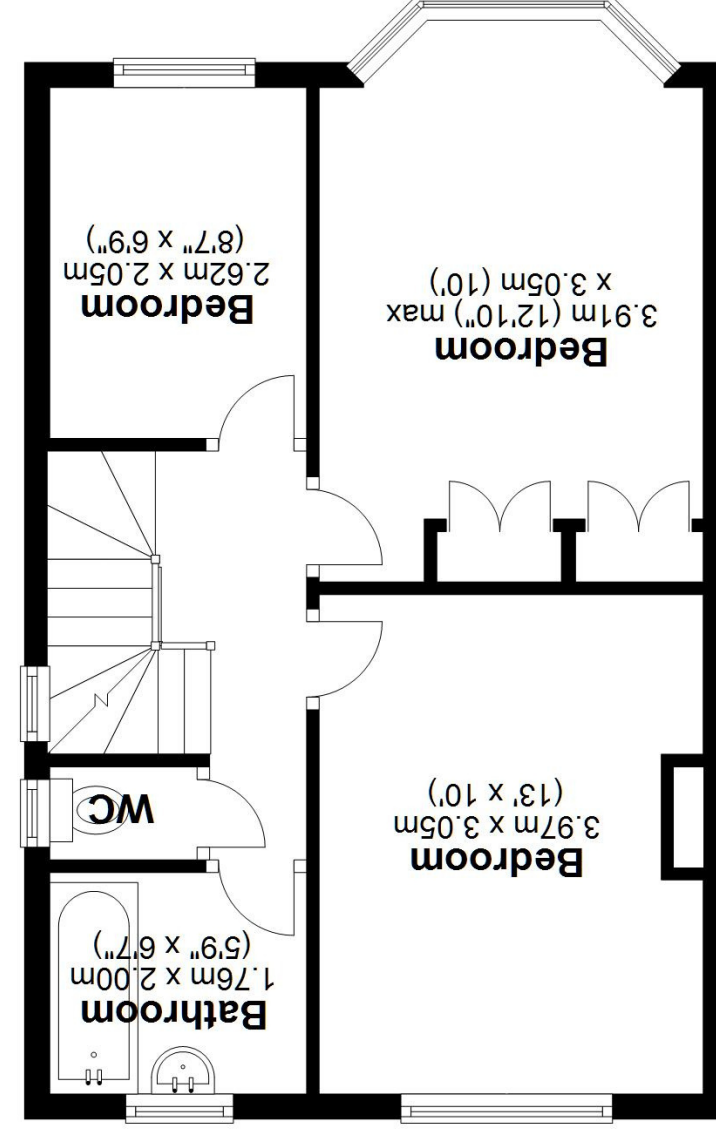


SCAN TO VIEW OUR WEEKLY FILMS & SUBSCRIBE

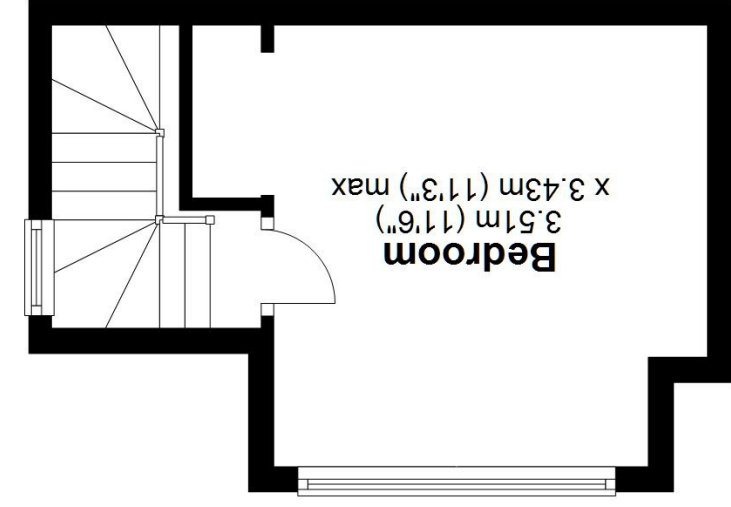
Ground Floor
Approx. 69.1 sq. metres (743.3 sq. feet)



First Floor
Approx. 41.4 sq. metres (446.0 sq. feet)



Second Floor
Approx. 15.8 sq. metres (170.5 sq. feet)



Total area: approx. 126.3 sq. metres (1359.8 sq. feet)

This floor plan is for illustration purposes only, this is not intended to be a measured/scaled survey or comply with RICS guidelines. All measurements (including total floor area) openings, orientation and floor area are approximate. No details are guaranteed, they cannot be relied upon for any purpose and do not form part of any agreement. A party must rely upon its own inspection(s). No responsibility is taken for any error, omission, or mis-statement.

Plan produced using PlanUp.