

Need a Mortgage in principle to make offers? Call us now for quick assistance!
0121 775 0101



Do you need to sell? Start your journey now! Call us we can help.
01564 777 314



2318 Stratford Road

Asking Price of £575,000

SCAN FOR MORE INFO

SIZE - 1364 Sq Ft
TENURE - Freehold
COUNCIL TAX - Solihull MBC - E
BROADBAND - Upload Max 220 Mbps
Download Max 1000 Mbps
MOBILE - EE Three O2 Vodafone
EPC - B
PARKING - Driveway Parking
FLOODRISK - Very Low
SERVICES - Mains
COVENANTS - N/A

Are you an investor interested in expanding your portfolio?

Call 01564 777 314 to provide your investment criteria for alerts.

Discover this charming, four-bedroom detached house in the heart of Hockley Heath, featuring a modern breakfast kitchen, a spacious lounge with a log burner, and a large private garden. Perfect for families seeking a blend of comfort and style and including solar panels and ECO system.

FEATURES

- Four Bedroom Detached House
- Lounge with Log Burner
- Modern Breakfast Kitchen
- Separate Dining Room
- Spacious Family Bathroom
- Large Private Garden
- Off Road Parking
- Village Proximity
- Benefitting from Solar Panels & Eco System
- Potential to Extend STPP

Sneak Peeks

Every week, we unveil "Sneak Peeks," a feature showcasing exclusive properties before they hit Rightmove and other platforms.

The Landlord Club

Join our Landlord Club for weekly updates on legislation, market trends, and our Letting Director's 'Investment Pick of the Week' for optimal ROI.

HTSPMD

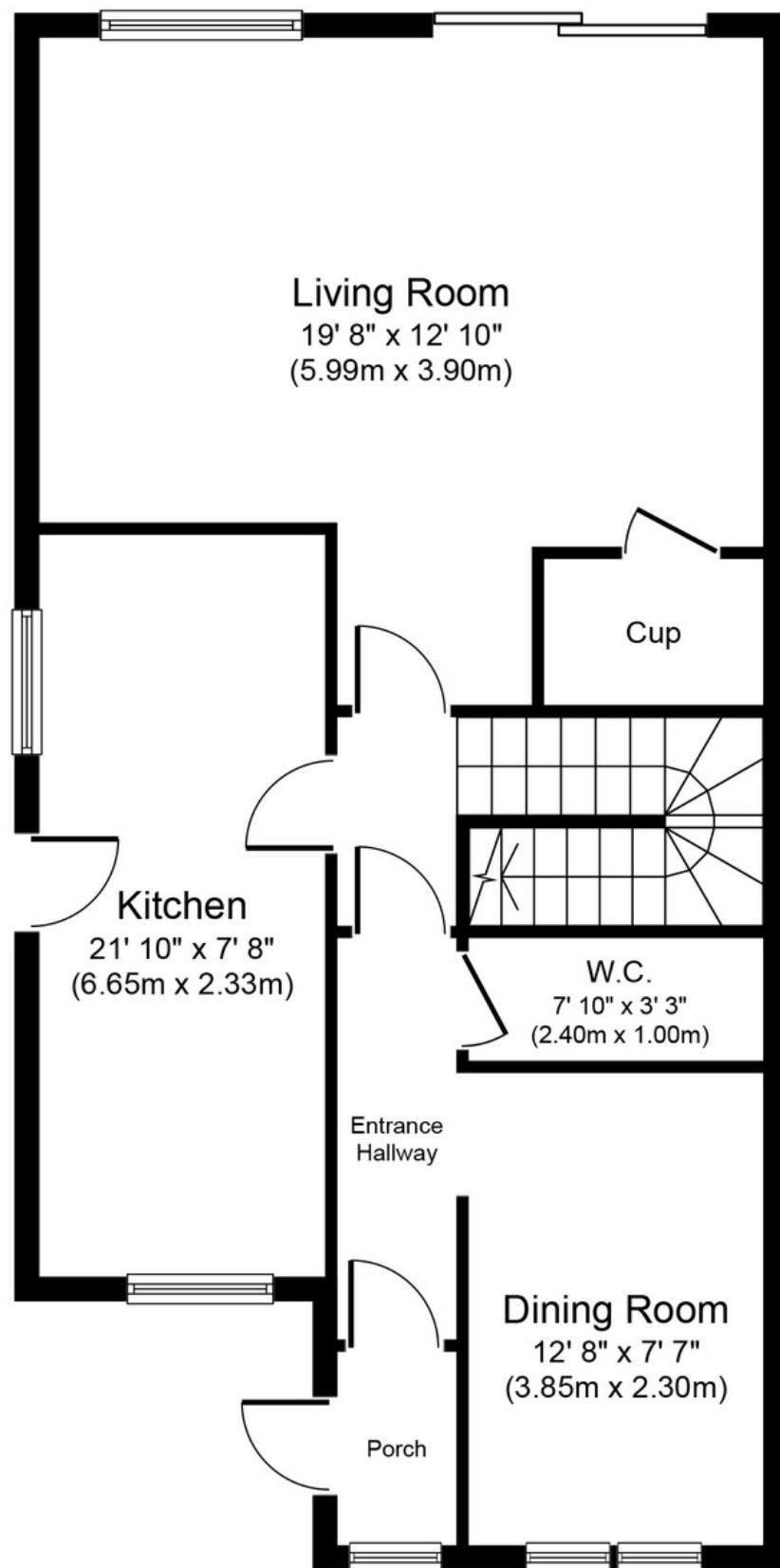
Tune into 'How's The Solihull Property Market Dom' weekly for a quick, insightful snapshot of the market.

The Mortgage Update

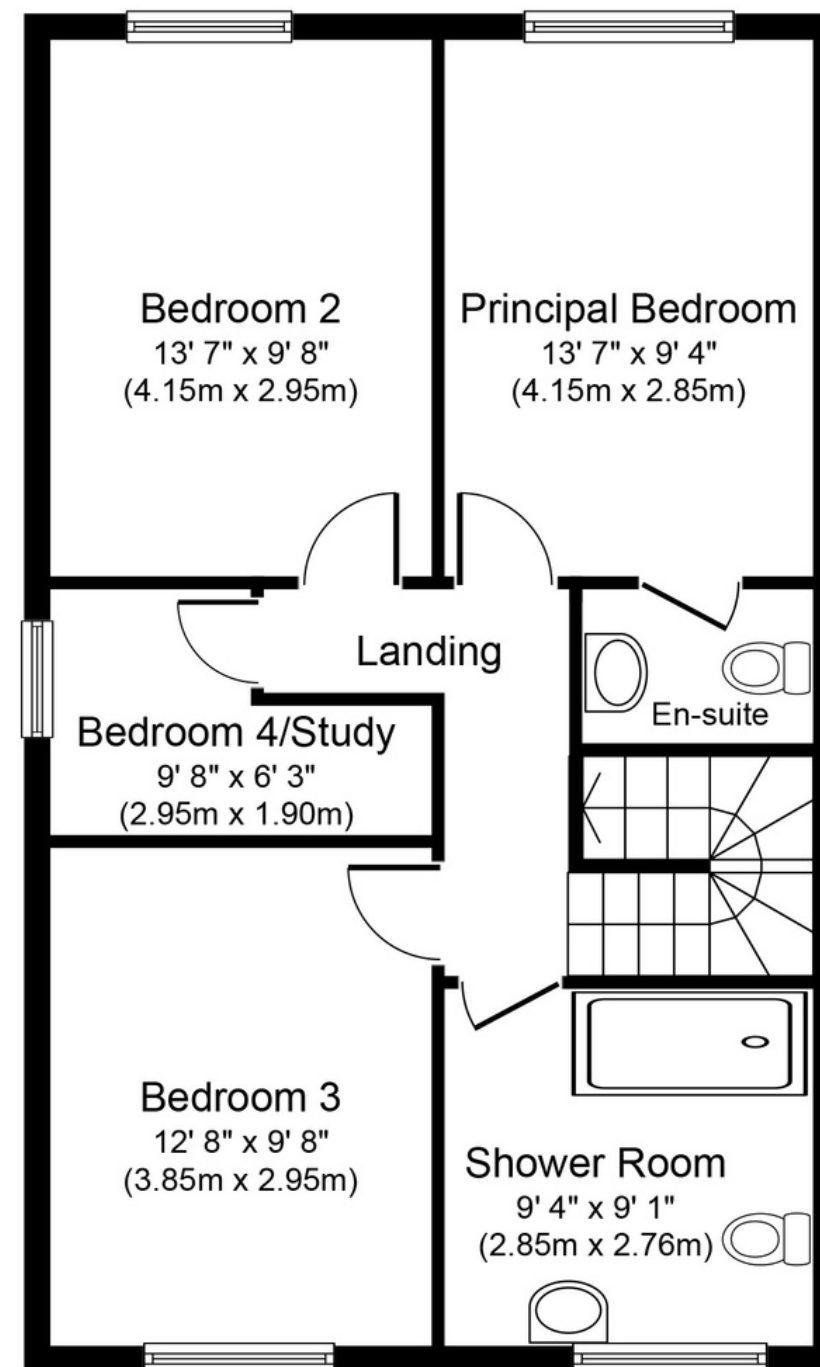
Get weekly insights and the best deals with our Mortgage Update, your shortcut to navigating the complex mortgage landscape confidently.



SCAN TO VIEW OUR WEEKLY FILMS & SUBSCRIBE



Ground Floor
Approximate Floor Area
723 sq. ft.
(67.2 sq. m.)



First Floor
Approximate Floor Area
641 sq. ft.
(59.6 sq. m.)

Whilst every attempt has been made to ensure the accuracy of the floor plan contained here, measurements of doors, windows, rooms and any other items are approximate and no responsibility is taken for any error, omission, or mis-statement. The measurements should not be relied upon for valuation, transaction and/or funding purposes. This plan is for illustrative purposes only and should be used as such by any prospective purchaser or tenant.

The services, systems and appliances shown have not been tested and no guarantee as to their operability or efficiency can be given.