

Need a Mortgage in principle to make offers? Call us now for quick assistance!
0121 775 0101



Do you need to sell? Start your journey now! Call us we can help.
0121 775 0101



SCAN FOR MORE INFO
SIZE - 838 Sq Ft
TENURE - Freehold
COUNCIL TAX - Solihull MBC - C
BROADBAND - Upload Max 1000 Mbps
 Download Max 1000 Mbps
MOBILE - EE O2
EPC - D - 63
PARKING - For at least 2 Cars
FLOODRISK - Very Low
SERVICES - Mains
COVENANTS - N/A

HOWARD ROAD

Offers in the region of £275,000

Situated in the popular location of Olton stands this beautifully presented semi-detached property. It is ideally placed for commuter links on the Coventry Road, Olton and Solihull town centres and Birmingham International Airport. Viewings are highly recommended.

FEATURES

- Tastefully Presented Property
- No Upward Chain
- Sale Includes all White Goods
- Ideal First Time Buyer, Downsizer or Investor Opportunity
- Bright Lounge with Bay Window
- Spacious Dining Room with Conservatory
- Kitchen with Useful Utility Area
- Principal Bedroom with Fitted Wardrobes
- Second Double Bedroom and Third Single
- Shower Room
- Driveway Parking
- Rear Garden
- Convenient Location

Are you an investor interested in expanding your portfolio?

Call 0121 775 0101 to provide your investment criteria for alerts.



SCAN TO VIEW OUR WEEKLY FILMS & SUBSCRIBE

Sneak Peeks

Every week, we unveil "Sneak Peeks," a feature showcasing exclusive properties before they hit Rightmove and other platforms.

The Landlord Club

Join our Landlord Club for weekly updates on legislation, market trends, and our Letting Director's 'Investment Pick of the Week' for optimal ROI.

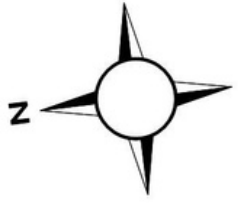
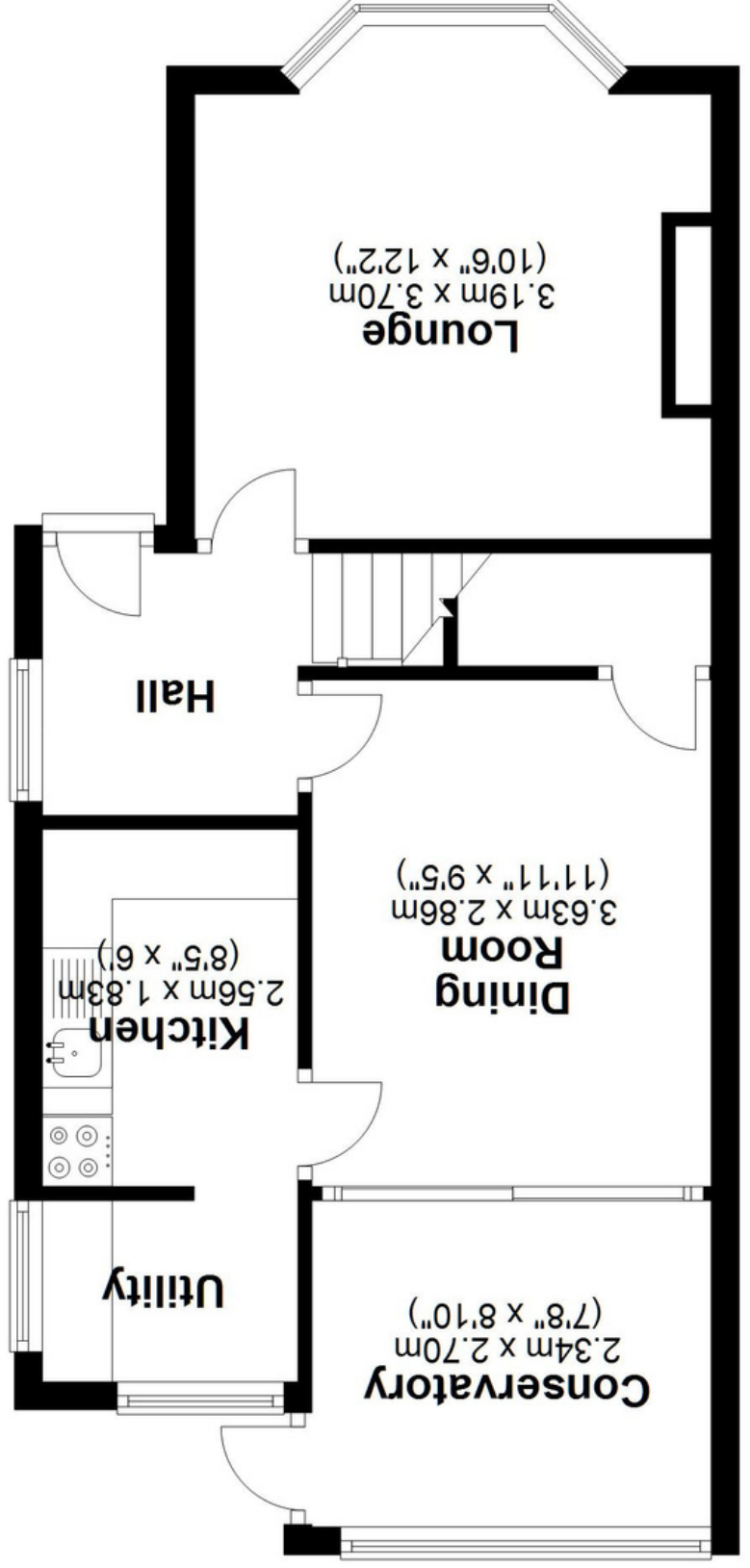
HTSPMD

Tune into 'How's The Solihull Property Market Dom' weekly for a quick, insightful snapshot of the market.

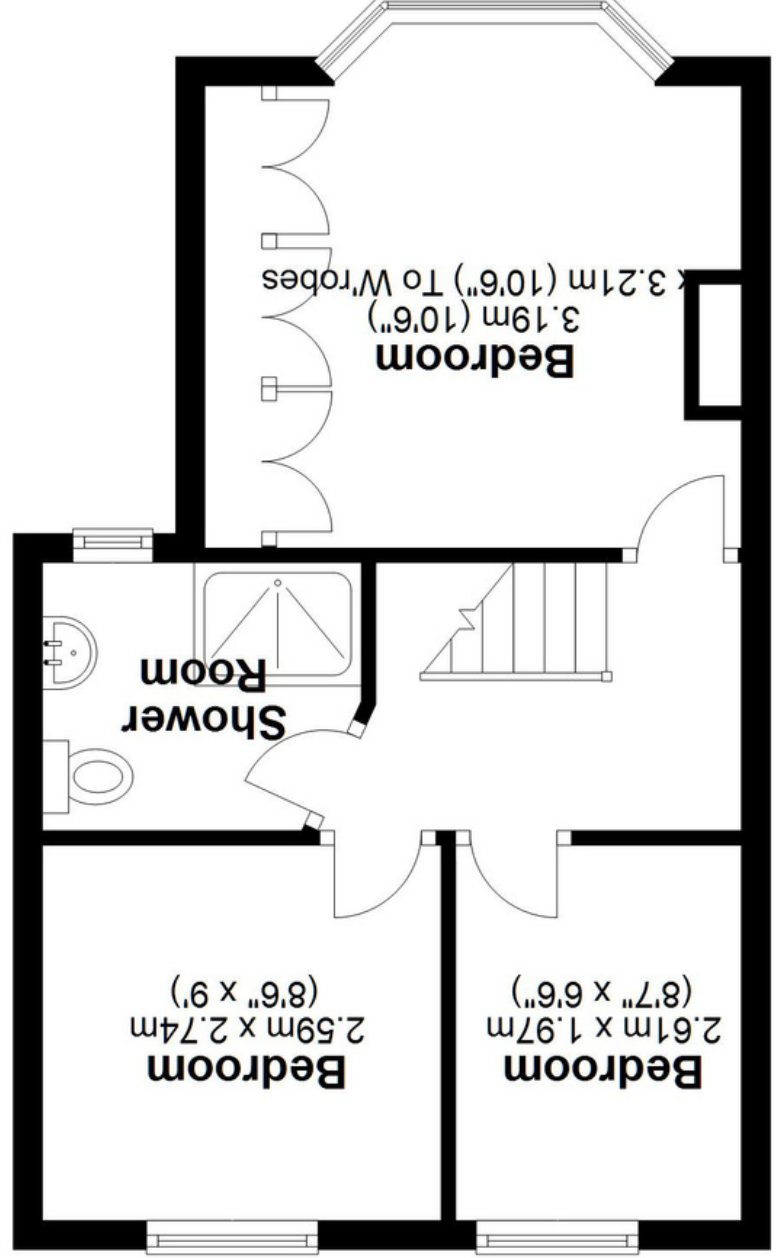
The Mortgage Update

Get weekly insights and the best deals with our Mortgage Update, your shortcut to navigating the complex mortgage landscape confidently.

Ground Floor
Approx. 43.6 sq. metres (468.8 sq. feet)



First Floor
Approx. 34.4 sq. metres (370.0 sq. feet)



Total area: approx. 77.9 sq. metres (838.8 sq. feet)

This floor plan is for illustration purposes only, this is not intended to be a measured/scaled survey or comply with RICS guidelines. All measurements (including total floor area) openings, orientation and floor area are approximate. No details are guaranteed, they cannot be relied upon for any purpose and do not form part of any agreement. A party must rely upon its own inspection(s). No responsibility is taken for any error, omission, or mis-statement.
Plan produced using PlanUp.