

Need a Mortgage in principle to make offers? Call us now for quick assistance!  
0121 775 0101



Do you need to sell? Start your journey now! Call us we can help.  
01564 777 314



## Walcot Green, Dorridge

Offers Over £700,000

**SCAN FOR MORE INFO**  
**SIZE** - 1,671 Sq Ft  
**TENURE** - Freehold  
**COUNCIL TAX** - Solihull MBC - F  
**BROADBAND** - Upload Max 100 Mbps  
 Download Max 1000 Mbps  
**MOBILE** - EE  
**EPC** - D  
**PARKING** - Parking for two cars  
**FLOODRISK** - Very Low  
**SERVICES** - Mains  
**COVENANTS** - N/A

Immaculately presented, this fantastic property has been fully modernised throughout. As you step inside, you are greeted by a generously sized entrance hallway that sets the tone for the rest of the house. The heart of the property lies in the expansive open plan kitchen, diner, and family room. Abundant natural light floods in through the dual aspect windows, illuminating the space that also features French doors leading out to the rear garden. A feature log burner adds a touch of elegance, while the fully integrated appliances and central island provide both functionality and style.

### FEATURES

- Four Bedroom Detached Property
- Walking Distance From Dorridge Village & Train Station
- Open Plan Modern Kitchen/Diner
- Home Office & Family Room
- Principal bedroom With En Suite
- Modern Family Bathroom
- Parking For Multiple Cars
- Private south west Facing Garden

Are you an investor interested in expanding your portfolio?

Call 01564 777 314 to provide your investment criteria for alerts.



SCAN TO VIEW OUR WEEKLY FILMS & SUBSCRIBE

### Sneak Peeks

Every week, we unveil "Sneak Peeks," a feature showcasing exclusive properties before they hit Rightmove and other platforms.

### The Landlord Club

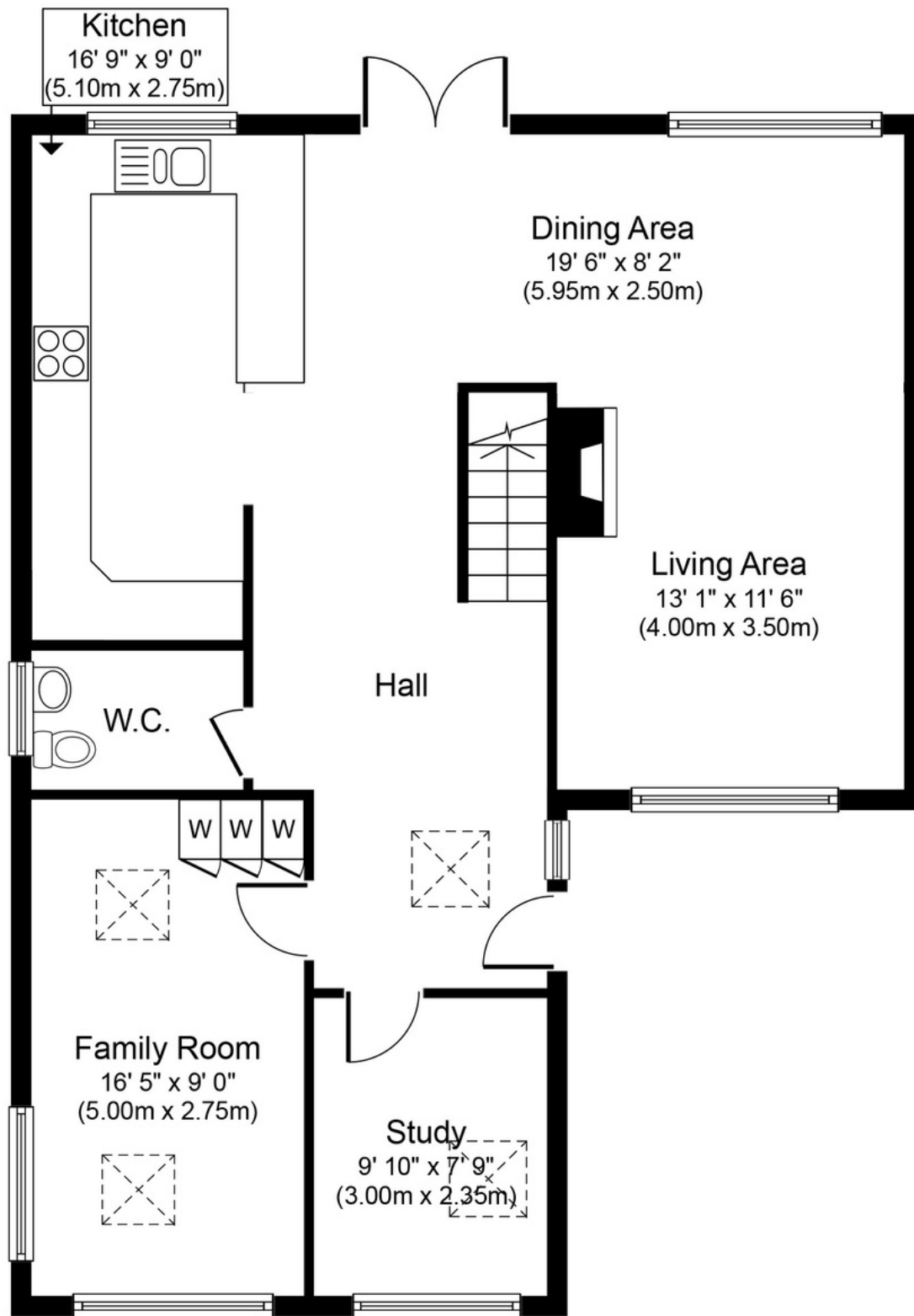
Join our Landlord Club for weekly updates on legislation, market trends, and our Letting Director's 'Investment Pick of the Week' for optimal ROI.

### HTSPMD

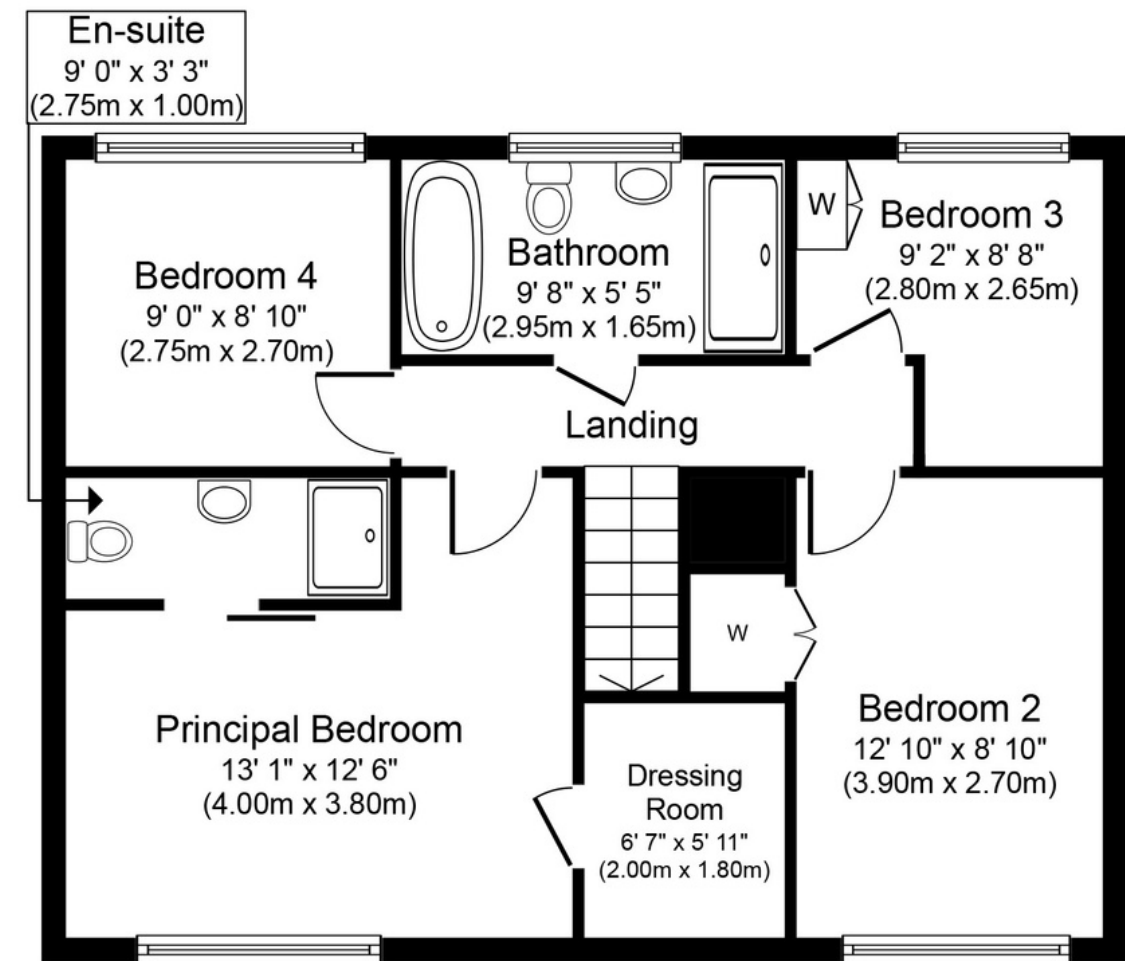
Tune into 'How's The Solihull Property Market Dom' weekly for a quick, insightful snapshot of the market.

### The Mortgage Update

Get weekly insights and the best deals with our Mortgage Update, your shortcut to navigating the complex mortgage landscape confidently.



**Ground Floor**  
**Approximate Floor Area**  
**971 sq. ft.**  
**(90.3 sq. m.)**



**First Floor**  
**Approximate Floor Area**  
**700 sq. ft.**  
**(65.0 sq. m.)**

Whilst every attempt has been made to ensure the accuracy of the floor plan contained here, measurements of doors, windows, rooms and any other items are approximate and no responsibility is taken for any error, omission, or mis-statement. The measurements should not be relied upon for valuation, transaction and/or funding purposes. This plan is for illustrative purposes only and should be used as such by any prospective purchaser or tenant. The services, systems and appliances shown have not been tested and no guarantee as to their operability or efficiency can be given.