

Need a Mortgage in principle
to make offers? Call us now
for quick assistance!
0121 775 0101



Do you need to sell?
Start your journey now!
Call us we can help.
01564 777 314



Ivy Lodge, 25 Fetherston Grange
Lapworth, B94 6PX
Offers Over £310,000

SCAN FOR MORE INFO
SIZE - 1068 Sq Ft
TENURE - Leasehold with 990 years remaining
SERVICE CHARGE - £212.00 payable per month. This will be reduced in September 2026 to £198.00 per month.
COUNCIL TAX - Warwick District Council - D
BROADBAND - Upload Max 20 Mbps Download Max 80 Mbps
MOBILE - EE, Vodafone
EPC - D - 58
PARKING - Garage and Driveway Parking
FLOODRISK - No Risk
SERVICES - Mains
COVENANTS - N/A

- FEATURES**
- Three Bedroom Apartment
 - Part of the Beautiful Fetherston Grange
 - Breakfast Kitchen and Living Room
 - Principal Bedroom with En Suite
 - Garage and Parking
 - Superb Communal Gardens
 - With Arden Academy Catchment Area

Are you an investor
interested in expanding your
portfolio?

Call **01564 777 314** to provide your
investment criteria for alerts.



SCAN TO **VIEW OUR**
WEEKLY FILMS &
SUBSCRIBE

Sneak Peeks

Every week, we unveil "Sneak Peeks," a feature showcasing exclusive properties before they hit Rightmove and other platforms.

The Landlord Club

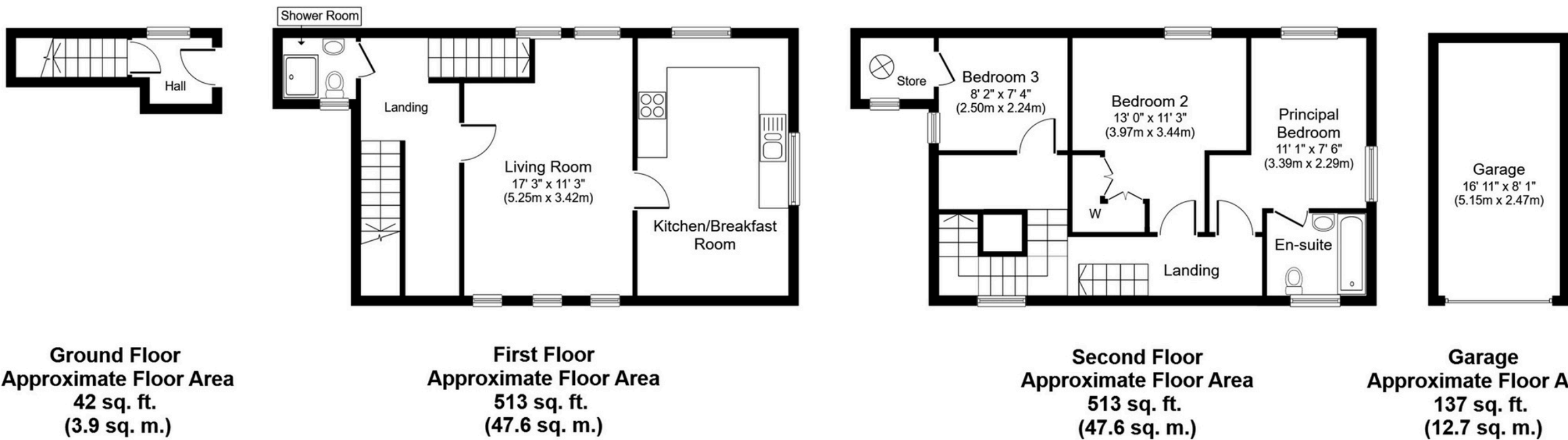
Join our Landlord Club for weekly updates on legislation, market trends, and our Letting Director's 'Investment Pick of the Week' for optimal ROI.

HTSPMD

Tune into 'How's The Solihull Property Market Dom' weekly for a quick, insightful snapshot of the market.

The Mortgage Update

Get weekly insights and the best deals with our Mortgage Update, your shortcut to navigating the complex mortgage landscape confidently.



Whilst every attempt has been made to ensure the accuracy of the floor plan contained here, measurements of doors, windows, rooms and any other items are approximate and no responsibility is taken for any error, omission, or mis-statement. The measurements should not be relied upon for valuation, transaction and/or funding purposes. This plan is for illustrative purposes only and should be used as such by any prospective purchaser or tenant.

The services, systems and appliances shown have not been tested and no guarantee as to their operability or efficiency can be given.

Copyright V360 Ltd 2024 | www.houseviz.com