

Need a Mortgage in principle to make offers? Call us now for quick assistance!  
0121 775 0101



Do you need to sell? Start your journey now! Call us we can help.  
01564 777 314



## 23 Alveston Grove, Knowle

Offers in excess of £575,000



### SCAN FOR MORE INFO

**SIZE** - 1224 Sq Ft  
**TENURE** - Freehold  
**COUNCIL TAX** - Solihull MBC - E  
**BROADBAND** - Upload Max 1000 Mbps  
 Download Max 1000 Mbps  
**MOBILE** - EE Three O2 Vodafone  
**EPC** - D  
**PARKING** - Garage and Driveway Parking  
**FLOODRISK** - Very Low  
**SERVICES** - Mains  
**COVENANTS** - N/A

A well presented four-bedroom detached home nestled within the coveted Arden Academy catchment area. Offering a spacious through lounge, a modern kitchen, and a generous private garden, this property boasts both elegance and potential for expansion (STPP). Perfectly positioned within walking distance to Knowle Village, it promises an idyllic family lifestyle in a sought-after locale.

### FEATURES

- Four Bedroom Detached House
- Through Lounge with Dual Aspect Views
- Modern Kitchen with Side Entrance
- Good Size Private Garden with Mature Foliage
- Downstairs WC for convenience
- Potential to Extend (STPP)
- Within Arden Academy Catchment Area
- Walking Distance to Knowle Village

Are you an investor interested in expanding your portfolio?

Call 01564 777 314 to provide your investment criteria for alerts.



### Sneak Peeks

Every week, we unveil "Sneak Peeks," a feature showcasing exclusive properties before they hit Rightmove and other platforms.

### HTSPMD

Tune into 'How's The Solihull Property Market Dom' weekly for a quick, insightful snapshot of the market.

### The Landlord Club

Join our Landlord Club for weekly updates on legislation, market trends, and our Letting Director's 'Investment Pick of the Week' for optimal ROI.

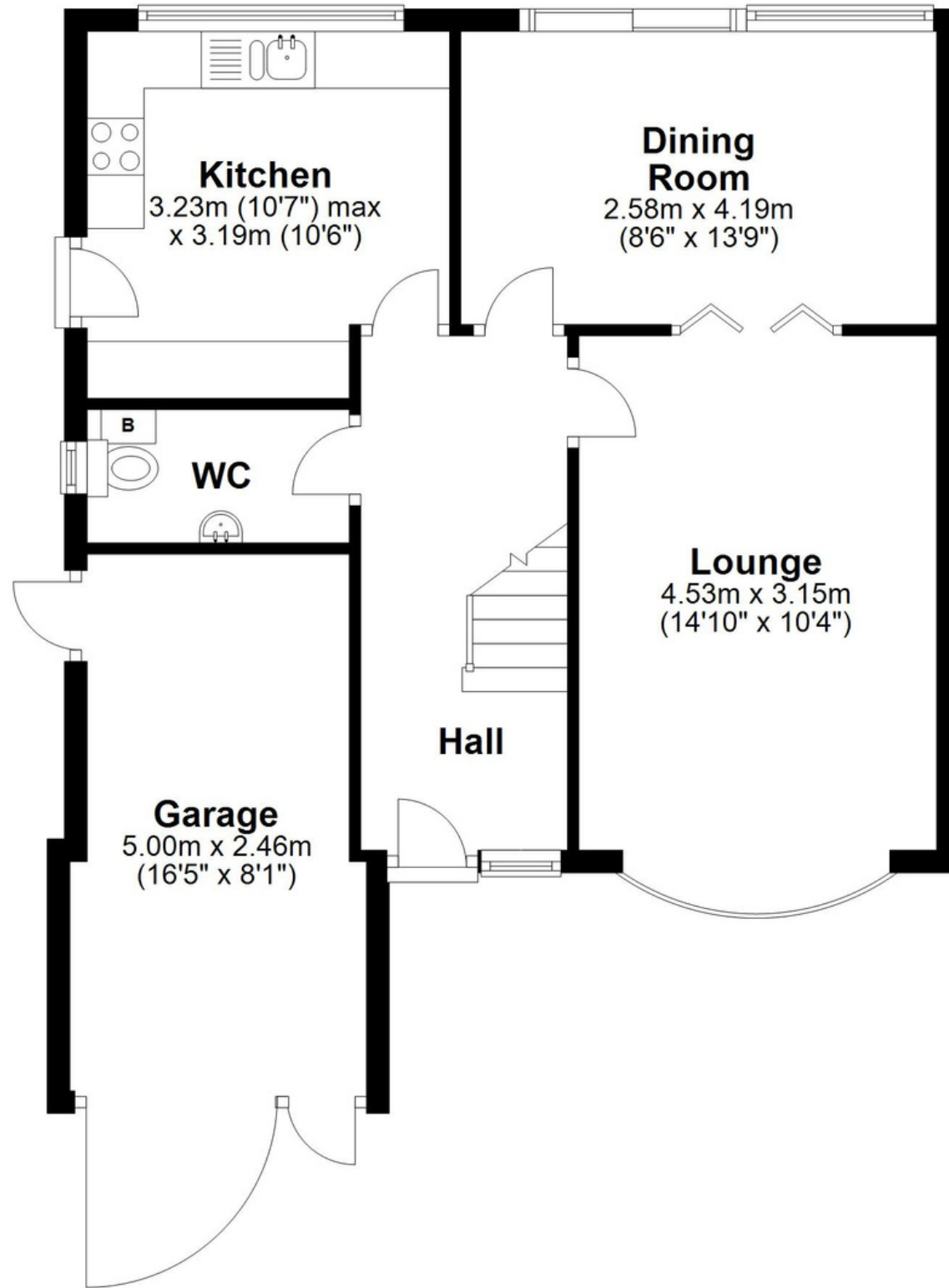
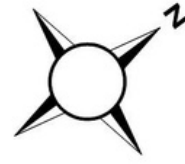
### The Mortgage Update

Get weekly insights and the best deals with our Mortgage Update, your shortcut to navigating the complex mortgage landscape confidently.

SCAN TO VIEW OUR WEEKLY FILMS & SUBSCRIBE

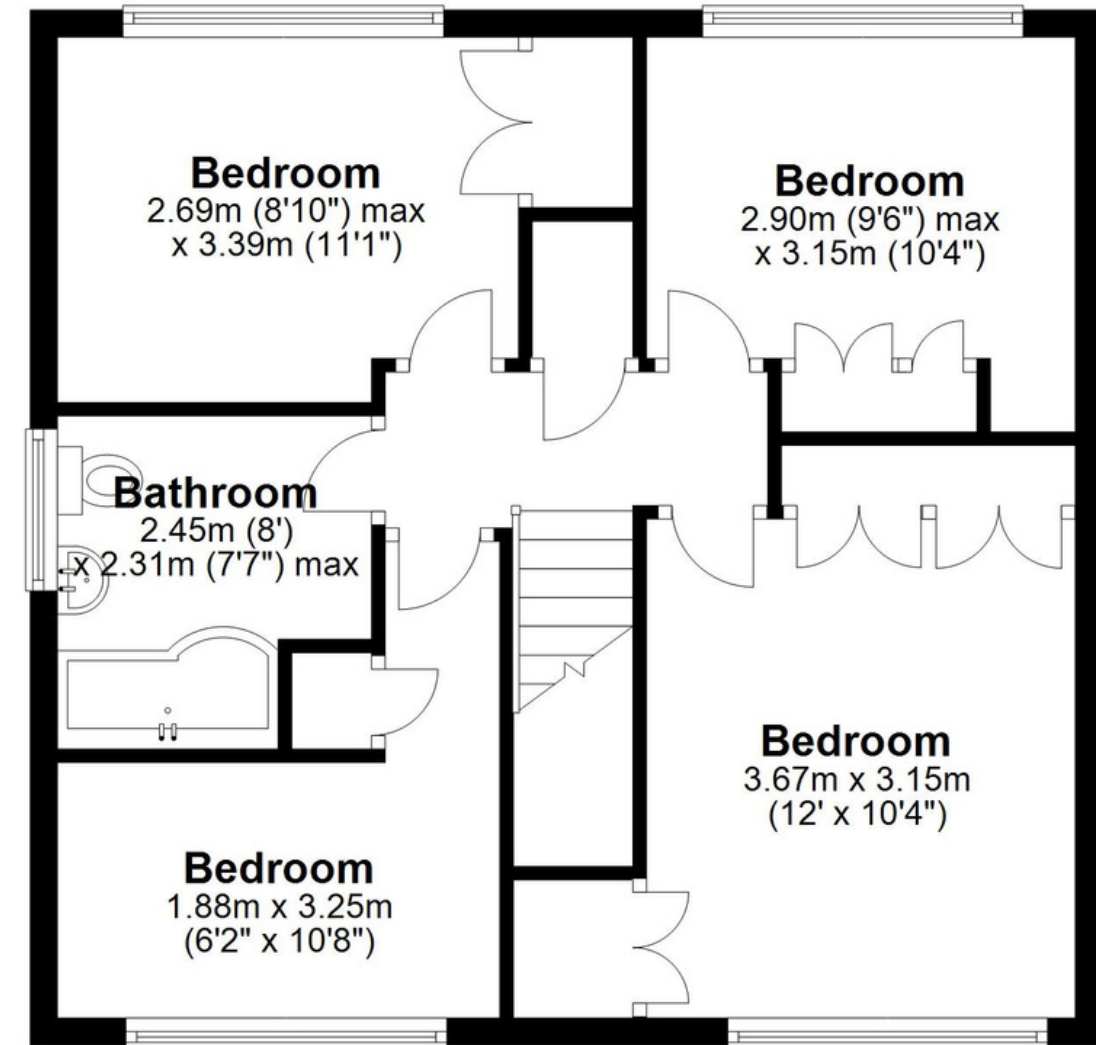
## Ground Floor

Approx. 59.8 sq. metres (643.2 sq. feet)



## First Floor

Approx. 54.0 sq. metres (580.8 sq. feet)



Total area: approx. 113.7 sq. metres (1224.0 sq. feet)

This floor plan is for illustration purposes only, this is not intended to be a measured/scaled survey or comply with RICS guidelines. All measurements (including total floor area) openings, orientation and floor area are approximate. No details are guaranteed, they cannot be relied upon for any purpose and do not form part of any agreement. A party must rely upon its own inspection(s). No responsibility is taken for any error, omission, or mis-statement.

Plan produced using PlanUp.