

Need a Mortgage in principle to make offers? Call us now for quick assistance!  
0121 775 0101



Do you need to sell? Start your journey now! Call us we can help.  
0121 775 0101



**SCAN FOR MORE INFO**  
**SIZE** - 1984 Sq Ft  
**TENURE** - Freehold  
**COUNCIL TAX** - Solihull MBC - G  
**BROADBAND** - Upload Max 1000 Mbps  
Download Max 1000 Mbps  
**MOBILE** - TBC  
**EPC** - D- 63  
**PARKING** - For at least 2 Cars  
**FLOODRISK** - Very Low  
**SERVICES** - Mains  
**COVENANTS** - N/A

## OAKSLADE DRIVE

Offers in the region of £440,000

Discover this stylish three-bedroom property, nestled in a serene cul-de-sac. Surrounded by nature, yet close to amenities, it promises a balanced lifestyle with spacious living areas and a touch of elegance.

### FEATURES

- Detached Property
- Three Bedrooms
- En-Suite to Principal Bedroom
- Spacious Lounge
- Dining/Garden Room
- Functional Kitchen
- Convenient Utility Room
- Guest Cloakroom
- Ample Garage
- Established Garage

Are you an investor interested in expanding your portfolio?

Call 0121 775 0101 to provide your investment criteria for alerts.



### Sneak Peeks

Every week, we unveil "Sneak Peeks," a feature showcasing exclusive properties before they hit Rightmove and other platforms.

### HTSPMD

Tune into 'How's The Solihull Property Market Dom' weekly for a quick, insightful snapshot of the market.

### The Landlord Club

Join our Landlord Club for weekly updates on legislation, market trends, and our Letting Director's 'Investment Pick of the Week' for optimal ROI.

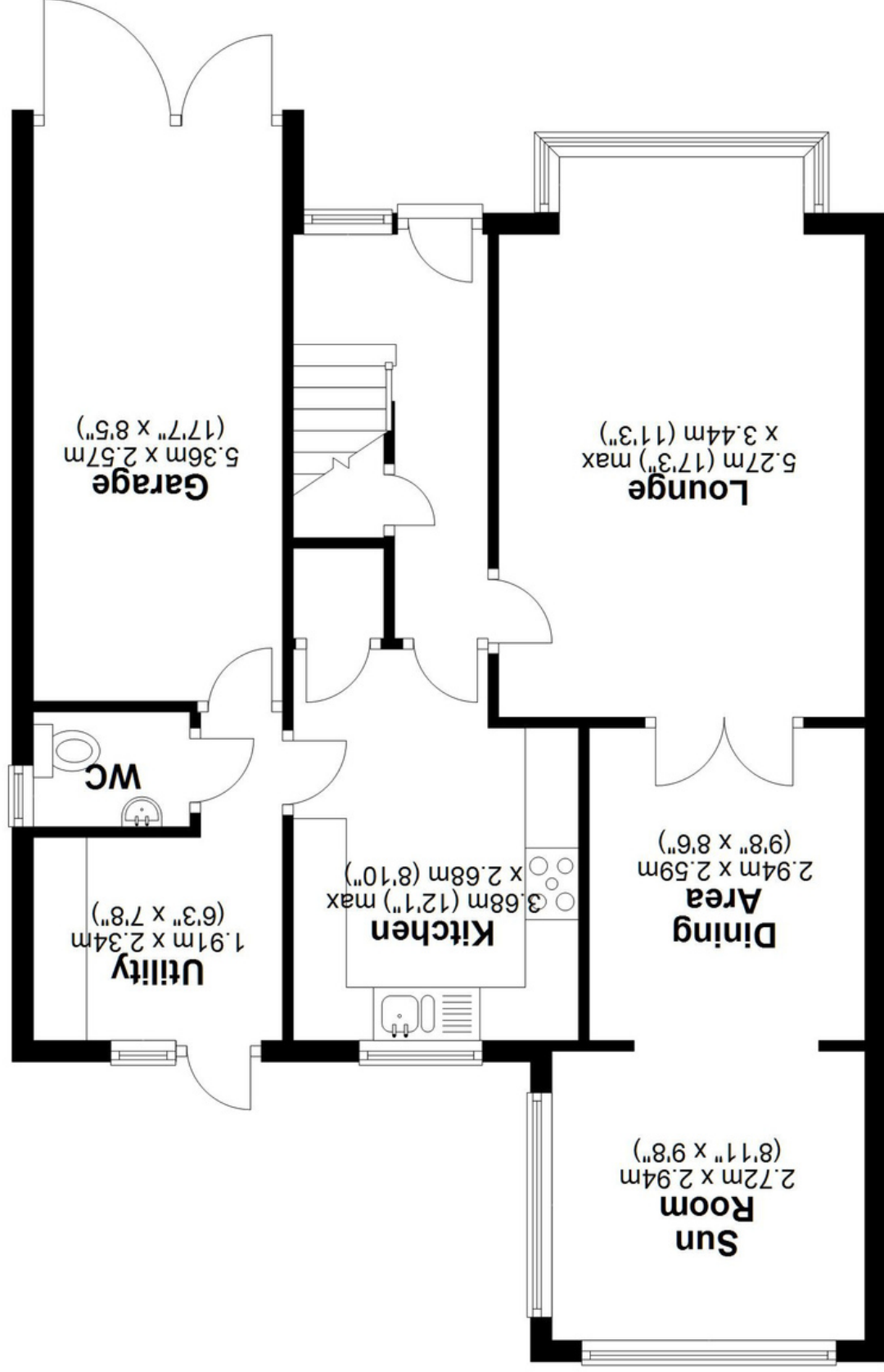
### The Mortgage Update

Get weekly insights and the best deals with our Mortgage Update, your shortcut to navigating the complex mortgage landscape confidently.

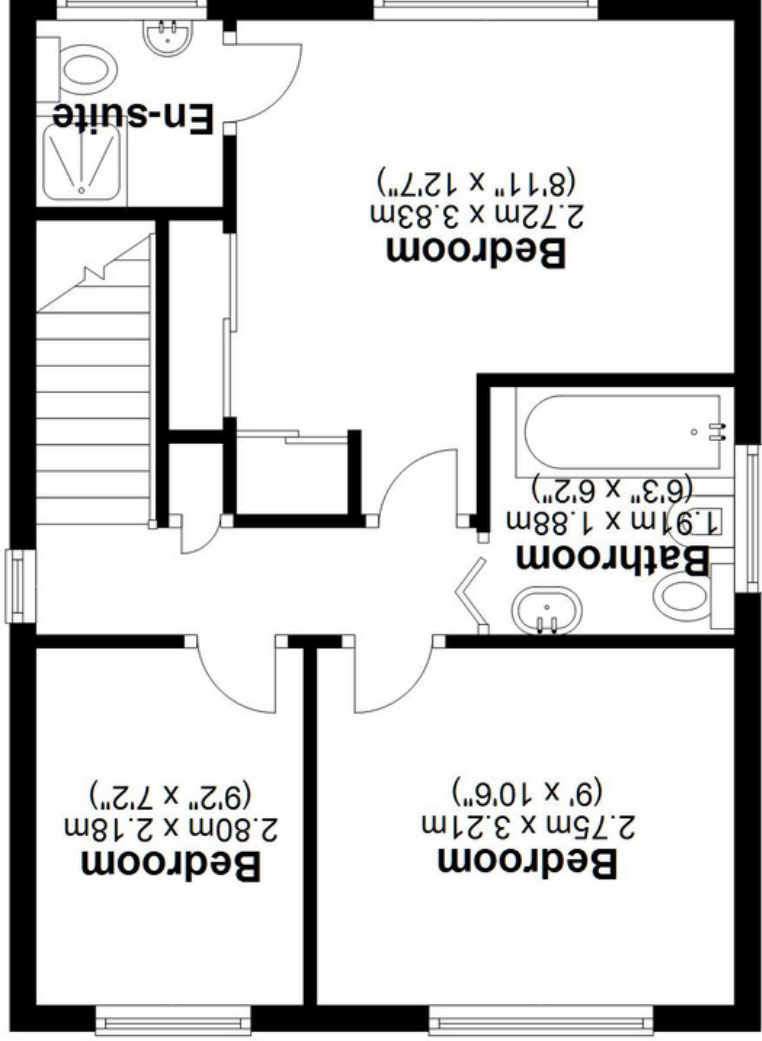
SCAN TO VIEW OUR WEEKLY FILMS & SUBSCRIBE



**Ground Floor**  
Approx. 72.7 sq. metres (782.1 sq. feet)



**First Floor**  
Approx. 41.3 sq. metres (444.5 sq. feet)



Total area: approx. 114.0 sq. metres (1226.6 sq. feet)

This floor plan is for illustration purposes only, this is not intended to be a measured/scaled survey or comply with RICS guidelines. All measurements (including total floor area) openings, orientation and floor area are approximate. No details are guaranteed, they cannot be relied upon for any purpose and do not form part of any agreement. A party must rely upon its own inspection(s). No responsibility is taken for any error, omission, or mis-statement.

Plan produced using PlanUp.