

Need a Mortgage in principle  
to make offers? Call us now  
for quick assistance!  
**0121 775 0101**



Do you need to sell?  
Start your journey now!  
Call us we can help.  
**0121 775 0101**



**SCAN FOR MORE INFO**  
**SIZE** - 1569 Sq Ft  
**TENURE** - Freehold  
**COUNCIL TAX** - Solihull Metropolitan Borough Council - G  
**BROADBAND** - Upload Max 1000Mbps  
Download Max 1800Mbps  
**MOBILE** - EE O2 Vodafone  
**EPC** - C - 70  
**PARKING** - For at least 6 Cars Plus Detached Double Garage  
**FLOODRISK** - Very Low  
**SERVICES** - Mains  
**COVENANTS** - N/A

Are you an investor  
interested in expanding your  
portfolio?

**Call 0121 775 0101 to provide your  
investment criteria for alerts.**

## ASHBOROUGH DRIVE

Hillfield, Solihull, B91

A fabulous detached family home offering an impressive 1,569 square feet of well-appointed living space. This delightful property is perfect for families seeking the Tudor Grange catchment, space, comfort and a touch of elegance in a desirable location. Offered with no upward chain.

### FEATURES

- Executive Detached Family Home with No Upward Chain
- Dual Aspect Living Room with Extensive Garden Room
- Separate Dining Room
- Fitted Kitchen with Utility Room
- Principal Bedroom with En-Suite Shower Room
- Three Further Good Sized Bedrooms
- Luxury Family Bathroom
- Ample Driveway Parking & Detached Double Garage
- Neat, Low Maintenance Rear Garden
- Tudor Grange Academy Catchment



SCAN TO **VIEW OUR  
WEEKLY FILMS &  
SUBSCRIBE**

### Sneak Peeks

Every week, we unveil "Sneak Peeks," a feature showcasing exclusive properties before they hit Rightmove and other platforms.

### The Landlord Club

Join our Landlord Club for weekly updates on legislation, market trends, and our Letting Director's 'Investment Pick of the Week' for optimal ROI.

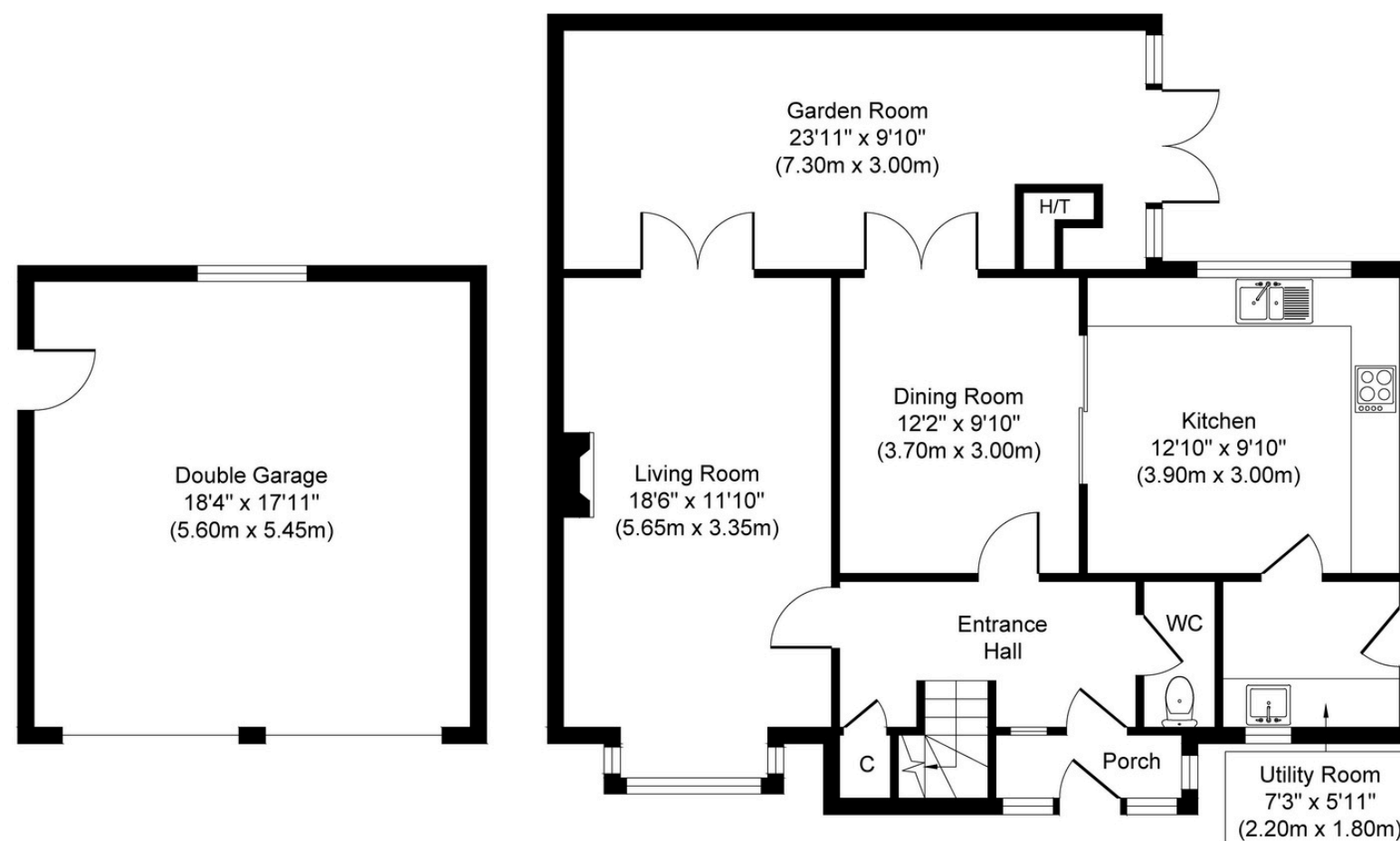
### HTSPMD

Tune into 'How's The Solihull Property Market Dom' weekly for a quick, insightful snapshot of the market.

### The Mortgage Update

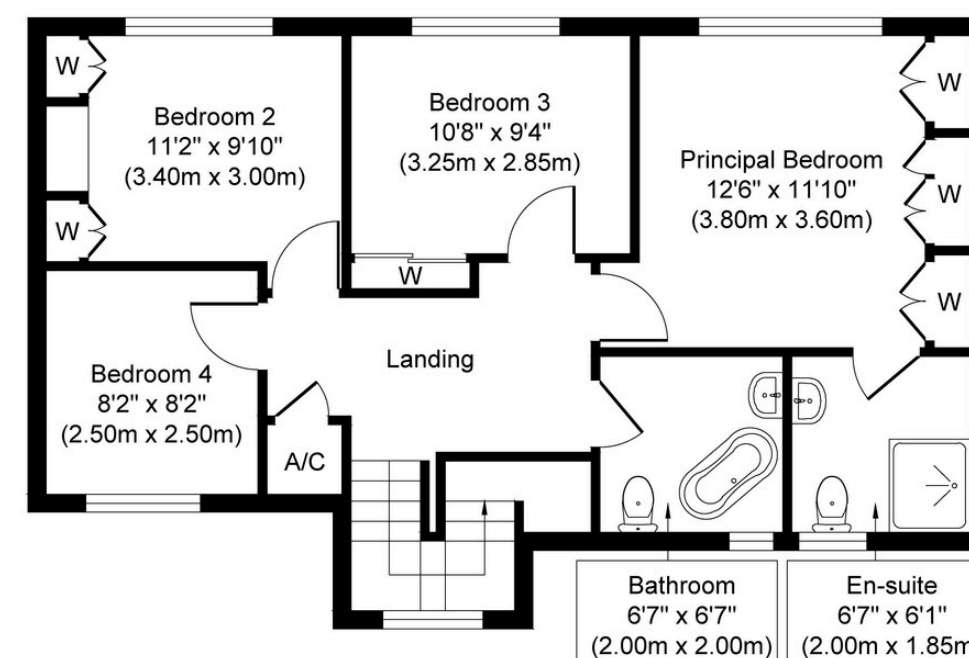
Get weekly insights and the best deals with our Mortgage Update, your shortcut to navigating the complex mortgage landscape confidently.





**Garage**  
**Approximate Floor Area**  
**328 sq. ft**  
**(30.47 sq. m)**

**Ground Floor**  
**Approximate Floor Area**  
**932 sq. ft**  
**(86.58 sq. m)**



**First Floor**  
**Approximate Floor Area**  
**637 sq. ft**  
**(59.17 sq. m)**

Whilst every attempt has been made to ensure the accuracy of the floor plan contained here, measurements of doors, windows, rooms and any other items are approximate and no responsibility is taken for any error, omission, or mis-statement. The measurements should not be relied upon for valuation, transaction and/or funding purposes. This plan is for illustrative purposes only and should be used as such by any prospective purchaser or tenant.

The services, systems and appliances shown have not been tested and no guarantee as to their operability or efficiency can be given.