

Need a Mortgage in principle
to make offers? Call us now
for quick assistance!
0121 775 0101



Do you need to sell?
Start your journey now!
Call us we can help.
01564 777 314



SCAN FOR MORE INFO
SIZE - 1271 Sq Ft
TENURE - Freehold
COUNCIL TAX - Solihull Metropolitan Borough Council - F
BROADBAND - Upload Max 1000Mbps
Download Max 1800Mbps
MOBILE - EE O2 Vodafone
EPC - B - 82
PARKING - Driveway & Single Garage
FLOODRISK - Very Low
SERVICES - Mains
COVENANTS - N/A

Are you an investor
interested in expanding your
portfolio?

**Call 01564 777 314 to provide your
investment criteria for alerts.**

35 BARTON DRIVE

Knowle, B93 0PE
Guide Price £625,000

Situated in the popular area of Knowle, this exquisite detached house, built in 2017, offers a perfect blend of modern living and comfort. This beautifully presented home is a must-see for anyone looking to settle in a vibrant community, offering both modern amenities and a warm, inviting atmosphere.

FEATURES

- Immaculately Presented Detached Property
- Stunning Breakfast Kitchen
- Spacious Lounge with Bi-Fold Doors
- Orangery/Dining Room
- Principal Bedroom with Fitted Wardrobes & En-Suite Shower Room
- Two Further Double Bedrooms with Fitted Wardrobes & Single Fourth
- Modern Family Bathroom
- Low Maintenance Rear Garden
- Driveway Parking & Detached Single Garage
- Convenient Location



SCAN TO **VIEW OUR**
WEEKLY FILMS &
SUBSCRIBE

Sneak Peeks

Every week, we unveil "Sneak Peeks," a feature showcasing exclusive properties before they hit Rightmove and other platforms.

The Landlord Club

Join our Landlord Club for weekly updates on legislation, market trends, and our Letting Director's 'Investment Pick of the Week' for optimal ROI.

HTSPMD

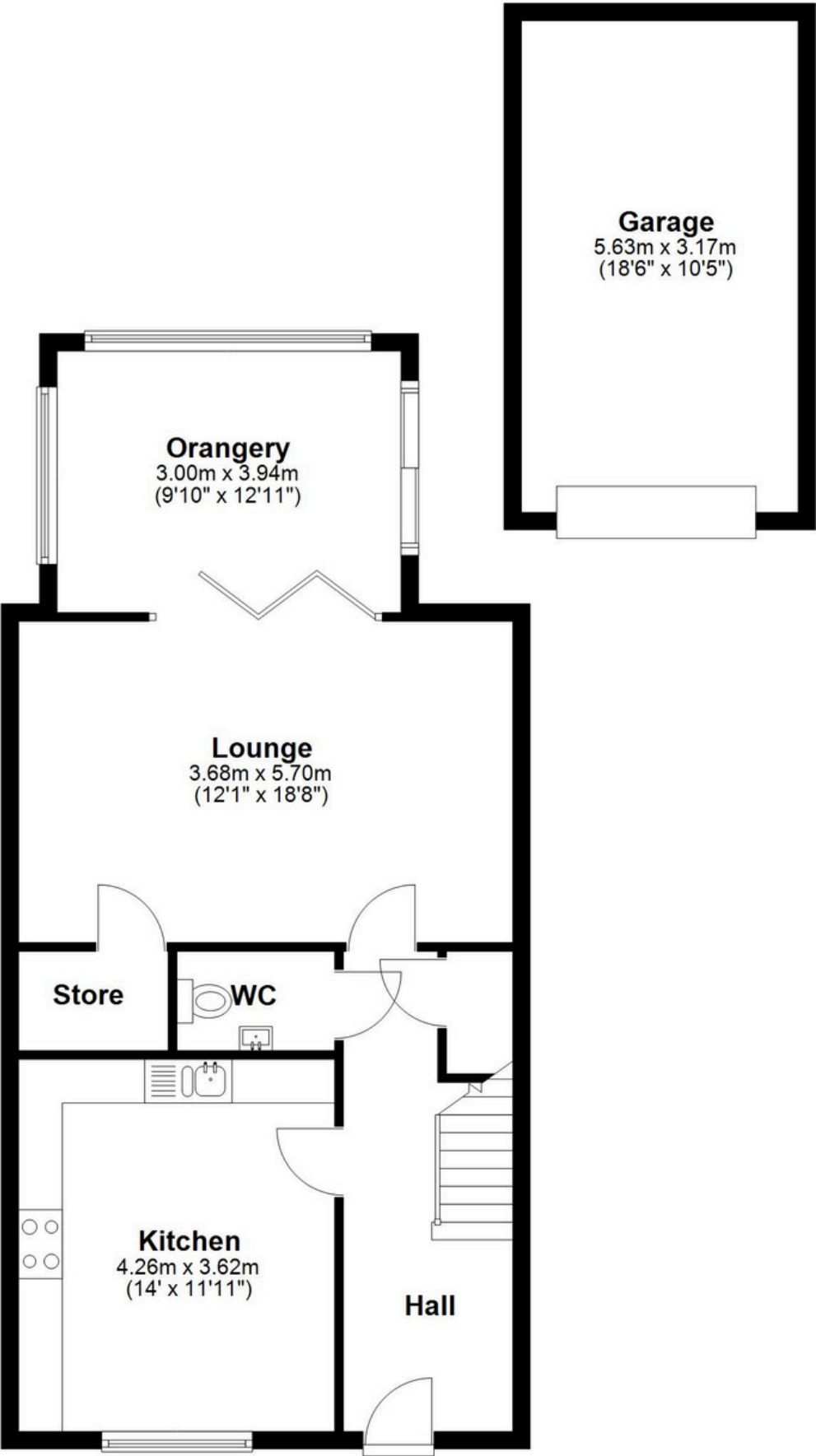
Tune into 'How's The Solihull Property Market Dom' weekly for a quick, insightful snapshot of the market.

The Mortgage Update

Get weekly insights and the best deals with our Mortgage Update, your shortcut to navigating the complex mortgage landscape confidently.

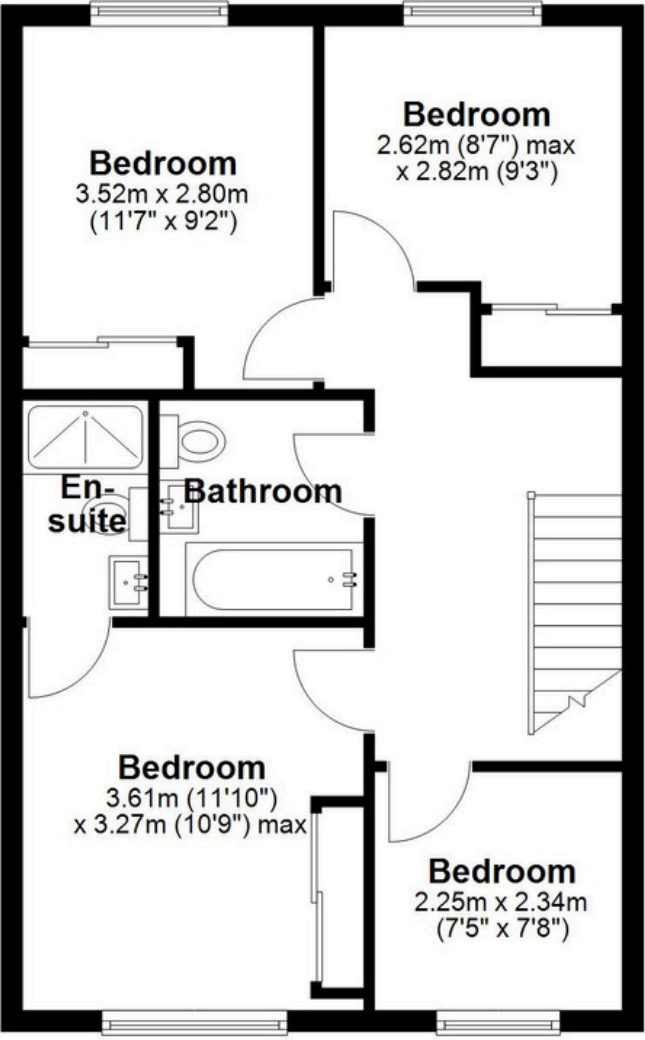
Ground Floor

Main area: approx. 64.9 sq. metres (698.3 sq. feet)
Plus garage, approx. 17.8 sq. metres (192.1 sq. feet)



First Floor

Approx. 53.2 sq. metres (573.0 sq. feet)



Main area: Approx. 118.1 sq. metres (1271.2 sq. feet)

Plus garage, approx. 17.8 sq. metres (192.1 sq. feet)

This floor plan is for illustration purposes only, this is not intended to be a measured/scaled survey or comply with RICS guidelines. All measurements (including total floor area) openings, orientation and floor area are approximate. No details are guaranteed, they cannot be relied upon for any purpose and do not form part of any agreement. A party must rely upon its own inspection(s). No responsibility is taken for any error, omission, or mis-statement.
Plan produced using PlanUp.