

Need a Mortgage in principle to make offers? Call us now for quick assistance!
0121 775 0101



Do you need to sell? Start your journey now! Call us we can help.
0121 775 0101



SCAN FOR MORE INFO
SIZE - 601 Sq Ft
TENURE - Leasehold 131 Years Remaining
GROUND RENT - Peppercorn
COUNCIL TAX - Solihull MBC B
BROADBAND - Max Upload 100Mbps
Max Download 1Gbps
EPC - C
PARKING - 0
FLOODRISK - Low

NETHERCOTE GARDENS

Offers in the excess of £150,000

Step into this charming maisonette, offering a generously-sized living/dining room bathed in natural light from expansive windows. Adjacent lies the meticulously kept kitchen, equipped with integrated appliances, blending functionality with style. The residence houses two spacious double bedrooms, with the principal bedroom adorned with fitted wardrobes for added convenience. A contemporary family bathroom, with modern fittings, completes this homely abode.

FEATURES

- Well Maintained Maisonette
- Spacious Living/Dining Room
- Separate Kitchen
- Two Double Bedrooms
- Principal Bedroom with Fitted Wardrobes
- Modern Family Bathroom
- Close to Local Amenities
- Easy Access to Commuter Links
- Ideal for First Time Buyers and Investors

Are you an investor interested in expanding your portfolio?

Call 0121 775 0101 to provide your investment criteria for alerts.



SCAN TO VIEW OUR WEEKLY FILMS & SUBSCRIBE

Sneak Peeks

Every week, we unveil "Sneak Peeks," a feature showcasing exclusive properties before they hit Rightmove and other platforms.

The Landlord Club

Join our Landlord Club for weekly updates on legislation, market trends, and our Letting Director's 'Investment Pick of the Week' for optimal ROI.

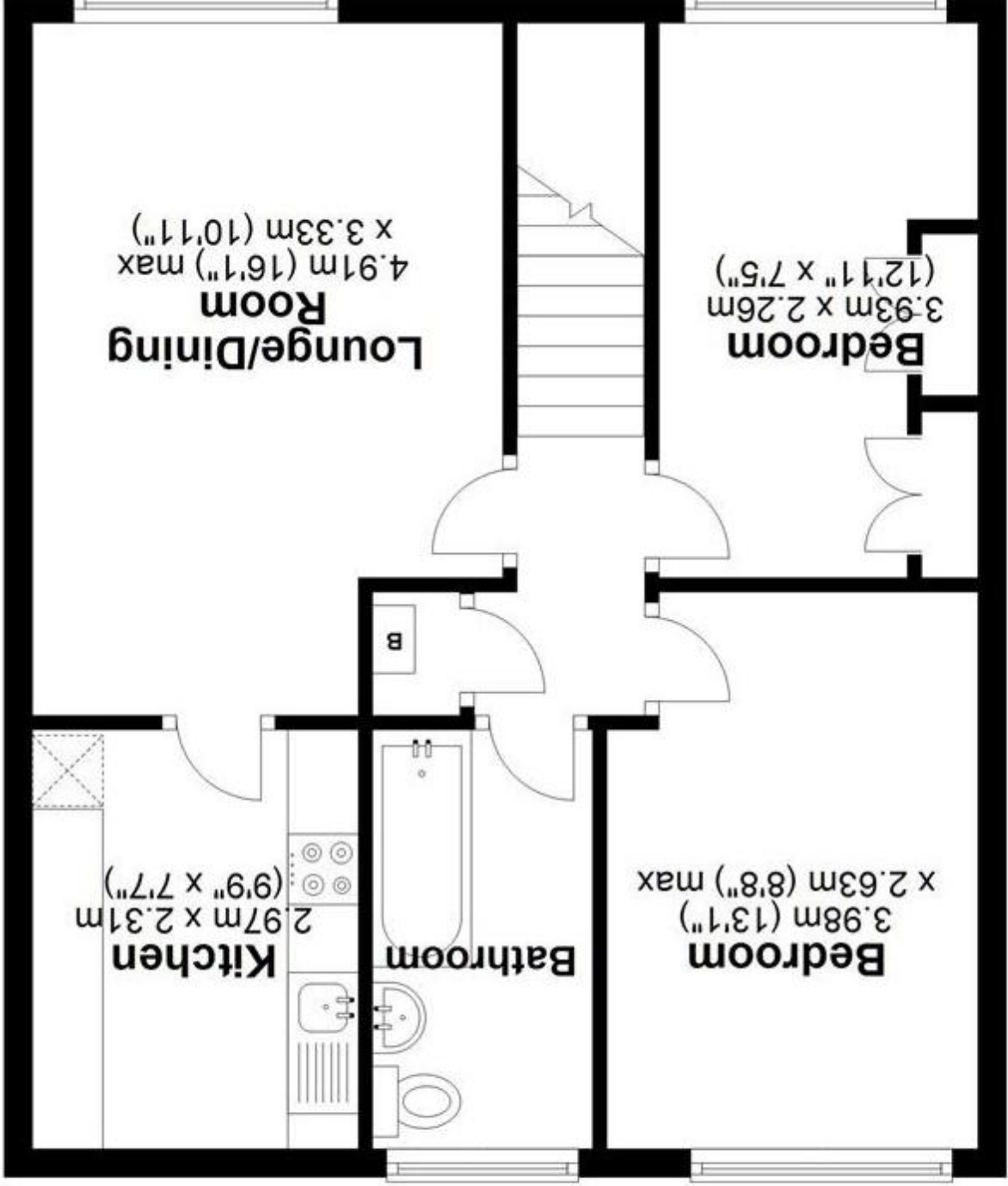
HTSPMD

Tune into 'How's The Solihull Property Market Dom' weekly for a quick, insightful snapshot of the market.

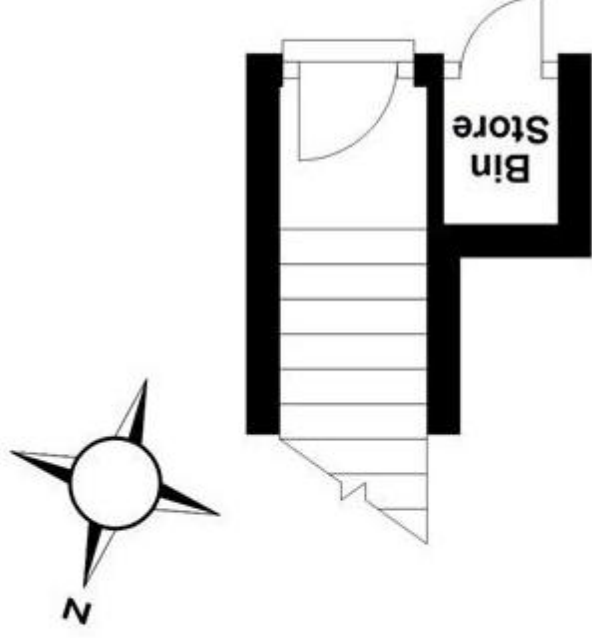
The Mortgage Update

Get weekly insights and the best deals with our Mortgage Update, your shortcut to navigating the complex mortgage landscape confidently.

First Floor
 Approx. 53.5 sq. metres (575.9 sq. feet)



Ground Floor
 Approx. 2.4 sq. metres (25.8 sq. feet)



Total area: approx. 55.9 sq. metres (601.7 sq. feet)

This floor plan is for illustration purposes only, this is not intended to be a measured/scaled survey or comply with RICS guidelines. All measurements (including total floor area) openings, orientation and floor area are approximate. No details are guaranteed, they cannot be relied upon for any purpose and do not form part of any agreement. A party must rely upon its own inspection(s). No responsibility is taken for any error, omission, or mis-statement.
 Plan produced using PlanUp.