

Need a Mortgage in principle to make offers? Call us now for quick assistance!  
0121 775 0101



Do you need to sell? Start your journey now! Call us we can help.  
0121 775 0101



## MARCOT ROAD

Offers in the region of £290,000

**SCAN FOR MORE INFO**  
**SIZE** - 701.4 Sq Ft  
**TENURE** - Freehold  
**COUNCIL TAX** - Solihull MBC - C  
**BROADBAND** - Upload Max 200Mbps  
 Download Max 1GBps  
**MOBILE** - EE Three O2 Vodafone  
**EPC** - D  
**PARKING** - For 4 Cars  
**FLOODRISK** - Very Low  
**SERVICES** - Mains  
**COVENANTS** - N/A

This charming three bedroom semi-detached property features a welcoming porch leading to a bright lounge and a stunning open-plan kitchen diner with French doors to the garden. Upstairs, there are two spacious double bedrooms, a cosy single room, and a luxurious family bathroom. Outside, a landscaped garden and driveway offer space for outdoor enjoyment and parking. Located in a sought-after neighbourhood, it provides easy access to amenities and excellent transport links.

### FEATURES

- Modern Three Bedroom Semi-Detached Property
- Light Lounge
- Stunning Open Plan Kitchen Diner
- Two Double Bedrooms
- Cozy Single Bedroom
- Luxurious Family Bathroom
- Long Landscaped Garden
- Driveway Parking

Are you an investor interested in expanding your portfolio?

Call 0121 775 0101 to provide your investment criteria for alerts.



### Sneak Peeks

Every week, we unveil "Sneak Peeks," a feature showcasing exclusive properties before they hit Rightmove and other platforms.

### HTSPMD

Tune into 'How's The Solihull Property Market Dom' weekly for a quick, insightful snapshot of the market.

### The Landlord Club

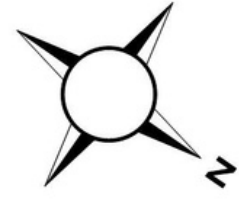
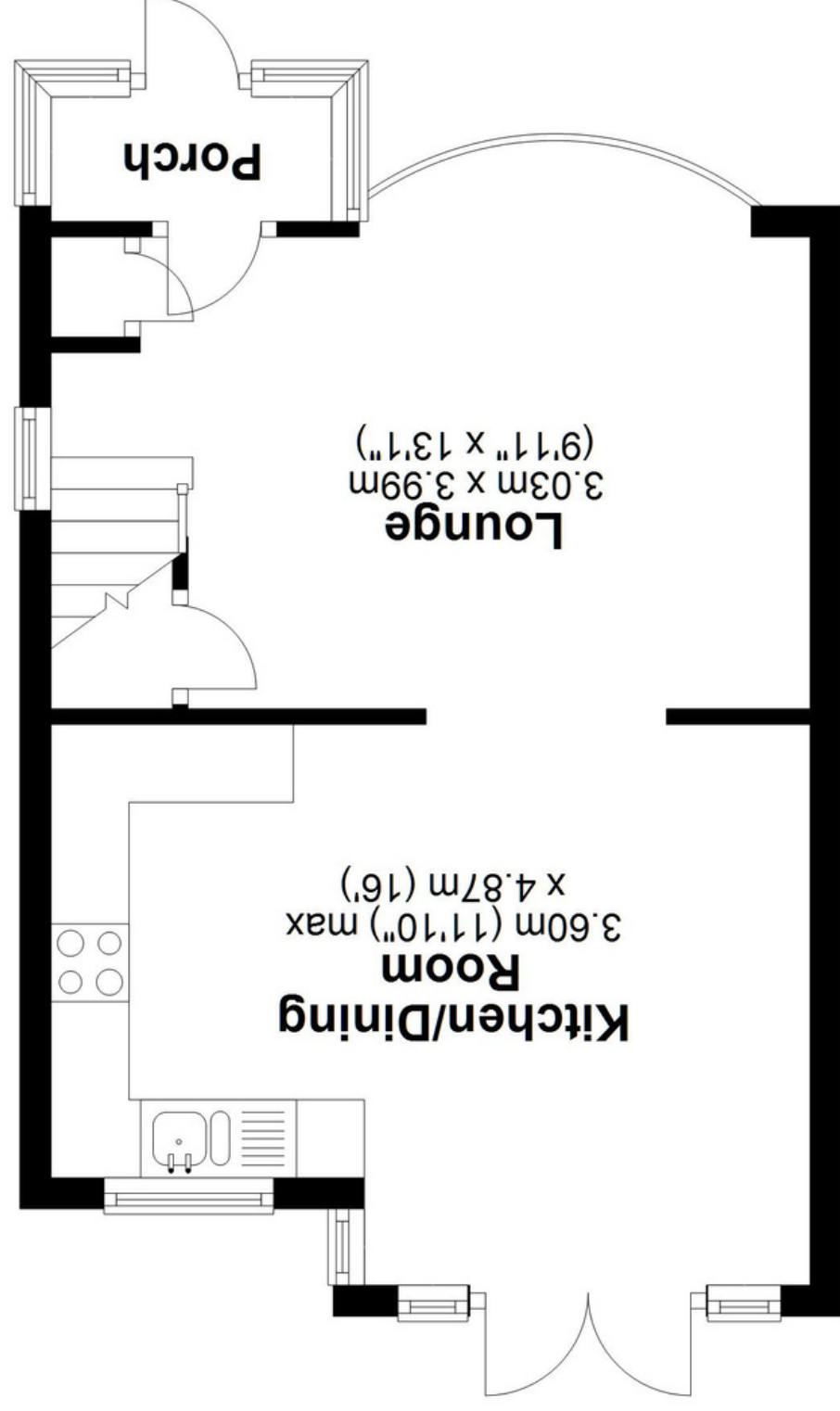
Join our Landlord Club for weekly updates on legislation, market trends, and our Letting Director's 'Investment Pick of the Week' for optimal ROI.

### The Mortgage Update

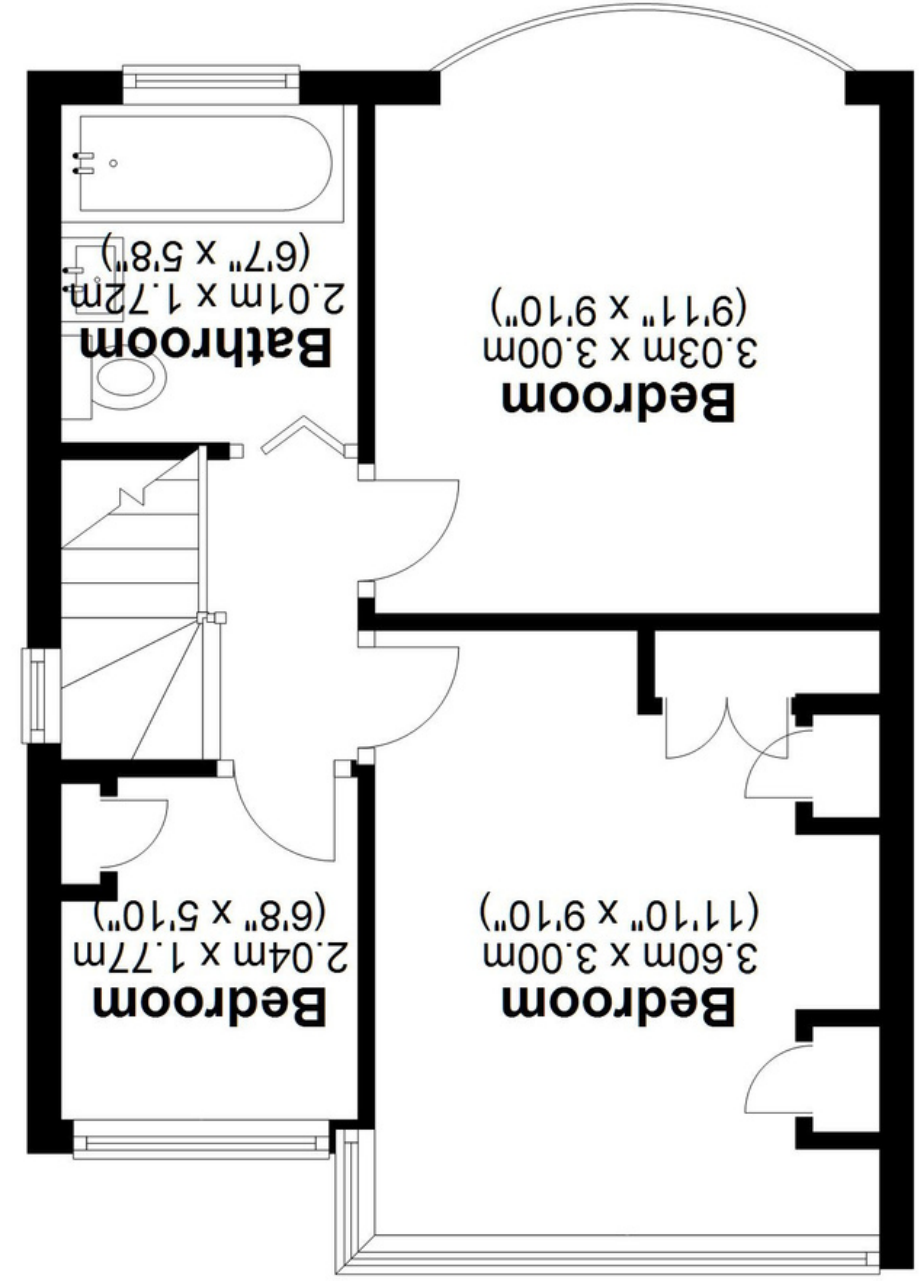
Get weekly insights and the best deals with our Mortgage Update, your shortcut to navigating the complex mortgage landscape confidently.

SCAN TO VIEW OUR WEEKLY FILMS & SUBSCRIBE

**Ground Floor**  
Approx. 33.4 sq. metres (359.2 sq. feet)



**First Floor**  
Approx. 31.8 sq. metres (342.1 sq. feet)



**Total area: approx. 65.2 sq. metres (701.4 sq. feet)**

This floor plan is for illustration purposes only, this is not intended to be a measured/scaled survey or comply with RICS guidelines. All measurements (including total floor area) openings, orientation and floor area are approximate. No details are guaranteed, they cannot be relied upon for any purpose and do not form part of any agreement. A party must rely upon its own inspection(s). No responsibility is taken for any error, omission, or mis-statement.  
Plan produced using PlanUp.