

Need a Mortgage in principle to make offers? Call us now for quick assistance!
0121 775 0101



Do you need to sell? Start your journey now! Call us we can help.
0121 775 0101



291 HASLUCKS GREEN ROAD

Offers in the region of £385,000

This stunning family home boasts two large reception rooms, a modern breakfast kitchen and what could be used as either a study, playroom or bedroom. Upstairs you'll find three bedrooms two of which are double and then the family bathroom. The well sized garden finalises up the property, making it perfect for growing families.

FEATURES

- Stunning Three Bedroom Family Home
- Semi-Detached Property
- Two Large Reception Rooms
- Modern Breakfast Kitchen
- Study or Further Double Bedroom
- Two Double & Third Single Bedroom
- Tasteful Family Bathroom
- Large Garden
- Ample Off Road Parking
- Conveniently Located Close to Local Amenities



SCAN FOR MORE INFO

SIZE - 1197 Sq Ft
TENURE - Freehold
COUNCIL TAX - Solihull MBC - C
BROADBAND - Ultrafast
Upload Max 1000 Mbps
Download Max 1000mbps
MOBILE - EE / Three / O2 / Vodafone
EPC - D
PARKING - For at least 3 Cars
FLOODRISK - Very Low
SERVICES - Mains
COVENANTS - N/A

Are you an investor interested in expanding your portfolio?

Call 0121 775 0101 to provide your investment criteria for alerts.



SCAN TO VIEW OUR WEEKLY FILMS & SUBSCRIBE

Sneak Peeks

Every week, we unveil "Sneak Peeks," a feature showcasing exclusive properties before they hit Rightmove and other platforms.

The Landlord Club

Join our Landlord Club for weekly updates on legislation, market trends, and our Letting Director's 'Investment Pick of the Week' for optimal ROI.

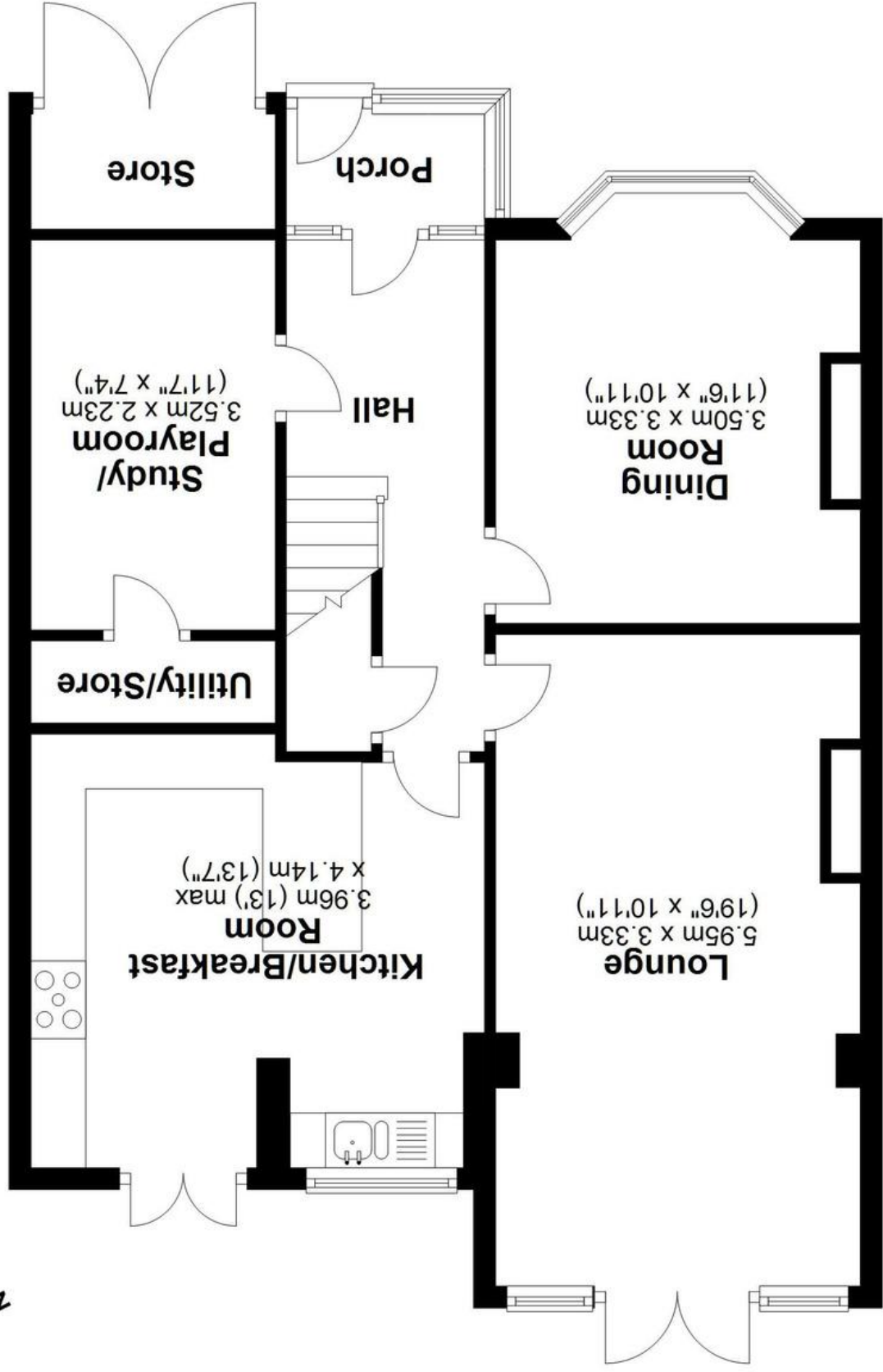
HTSPMD

Tune into 'How's The Solihull Property Market Dom' weekly for a quick, insightful snapshot of the market.

The Mortgage Update

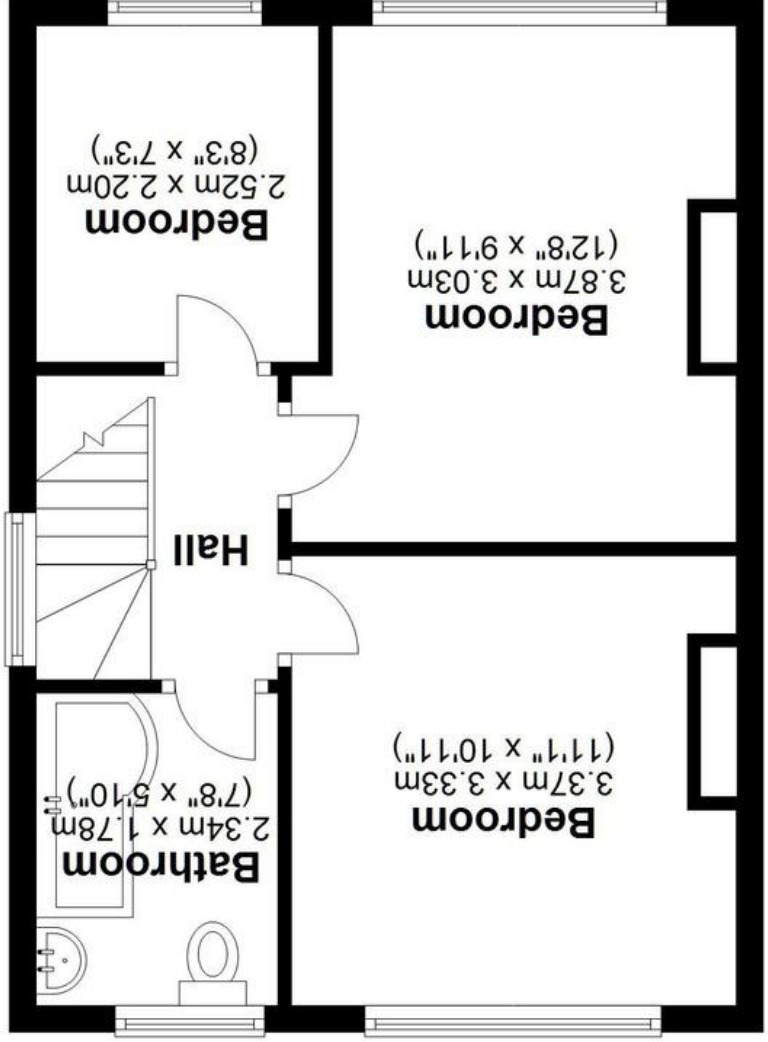
Get weekly insights and the best deals with our Mortgage Update, your shortcut to navigating the complex mortgage landscape confidently.

Ground Floor
Approx. 72.7 sq. metres (782.3 sq. feet)



Total area: approx. 111.3 sq. metres (1197.8 sq. feet)

First Floor
Approx. 38.6 sq. metres (415.5 sq. feet)



This floor plan is for illustration purposes only, this is not intended to be a measured/scaled survey or comply with RICS guidelines. All measurements (including total floor area) openings, orientation and floor area are approximate. No details are guaranteed, they cannot be relied upon for any purpose and do not form part of any agreement. A party must rely upon its own inspection(s). No responsibility is taken for any error, omission, or mis-statement.
Plan produced using PlanUp.