

Need a Mortgage in principle to make offers? Call us now for quick assistance!
0121 775 0101



Do you need to sell? Start your journey now! Call us we can help.
01564 777 314



SCAN FOR MORE INFO
SIZE - 1321 Sq Ft
TENURE - Freehold
COUNCIL TAX - Warwick District Council D
BROADBAND - Upload Max 220 MBps
 Download Max 1000 MBps
MOBILE - EE Three O2 Vodafone
EPC - E
PARKING - For several vehicles
FLOODRISK - Very Low
SERVICES - Cesspit, Oil fuel, and mains electricity
COVENANTS - N/A

Lapworth Grange Cottages

Offers Over £550,000

This three bedroom semi-detached property is located in the sought after village of Lapworth, close to stunning country walks and great county pubs. This property offers further potential to extend (STP), a large private garden, and has fantastic open views to the front

FEATURES

- Three Bedroom Semi-Detached House
- Lounge, Dining Room & Snug
- Kitchen, Utility and Guest Cloakroom
- Three Bedrooms & Family Bathroom
- Games Room With Utility
- Large Southerly Private Garden
- Open View To The Front
- Rare Opportunity
- Sought After Location
- Potential To Extend (STP)

Are you an investor interested in expanding your portfolio?

Call 01564 777 314 to provide your investment criteria for alerts.

Sneak Peeks

Every week, we unveil "Sneak Peeks," a feature showcasing exclusive properties before they hit Rightmove and other platforms.

The Landlord Club

Join our Landlord Club for weekly updates on legislation, market trends, and our Letting Director's 'Investment Pick of the Week' for optimal ROI.

HTSPMD

Tune into 'How's The Solihull Property Market Dom' weekly for a quick, insightful snapshot of the market.

The Mortgage Update

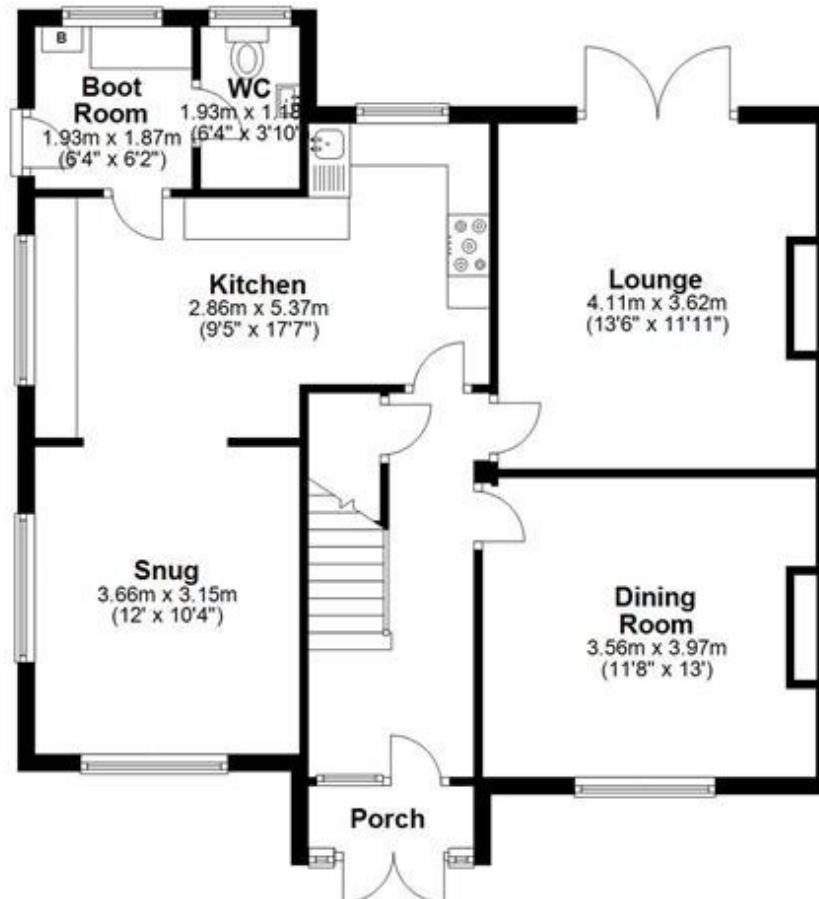
Get weekly insights and the best deals with our Mortgage Update, your shortcut to navigating the complex mortgage landscape confidently.



SCAN TO VIEW OUR WEEKLY FILMS & SUBSCRIBE

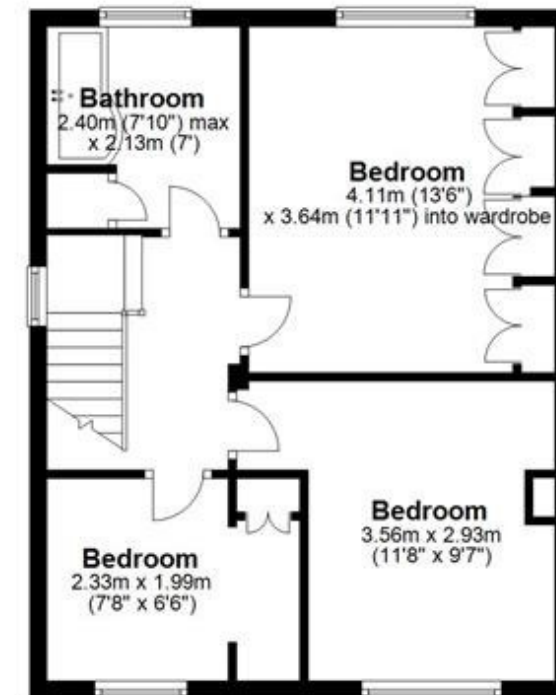
Ground Floor

Approx. 76.2 sq. metres (820.3 sq. feet)



First Floor

Approx. 46.5 sq. metres (501.0 sq. feet)



Total area: approx. 122.8 sq. metres (1321.3 sq. feet)

Please note this plan is for illustration purposes only, this is not intended to be a measured survey or comply with RICS guidelines. All measurements are for the actual floor area and are approximate so should be checked by prospective buyers/tenants. No responsibility is taken for any error, omission, or mis-statement.