

Need a Mortgage in principle to make offers? Call us now for quick assistance!
0121 775 0101



Do you need to sell? Start your journey now! Call us we can help.
0121 775 0101



SCAN FOR MORE INFO
SIZE - 1008 Sq Ft
TENURE - Leasehold with 140 years remaining
SERVICE CHARGE - £1,870 per annum
COUNCIL TAX - Solihull MBC - C
BROADBAND - Upload Max 1000 Mbps
 Download Max 1000 Mbps
MOBILE - Three O2
EPC - C - 66
PARKING - Single Garage
FLOODRISK - Very Low
SERVICES - Mains
COVENANTS - N/A

SAPPHIRE COURT

Offers in the region of £220,000

This is a delightful two-bedroom apartment on Sapphire Court in Olton, boasting a lovely open plan kitchen dining/living room and two double bedrooms. Just a brief stroll from Olton train station and local amenities, this property presents an excellent opportunity for comfortable living and benefits from no upward chain..

FEATURES

- Spacious and Modern First Floor Apartment
- Lift Access
- Stunning Open Plan Living
- Fitted Kitchen
- Two Double Bedrooms with Built-In Wardrobes
- Luxury Family Bathroom
- Lovely Balcony Overlooking Grounds
- Single Garage and Ample Communal Parking
- Short Walk to Olton Train Station
- No Upward Chain

Are you an investor interested in expanding your portfolio?

Call 0121 775 0101 to provide your investment criteria for alerts.

Sneak Peeks

Every week, we unveil "Sneak Peeks," a feature showcasing exclusive properties before they hit Rightmove and other platforms.

The Landlord Club

Join our Landlord Club for weekly updates on legislation, market trends, and our Letting Director's 'Investment Pick of the Week' for optimal ROI.

HTSPMD

Tune into 'How's The Solihull Property Market Dom' weekly for a quick, insightful snapshot of the market.

The Mortgage Update

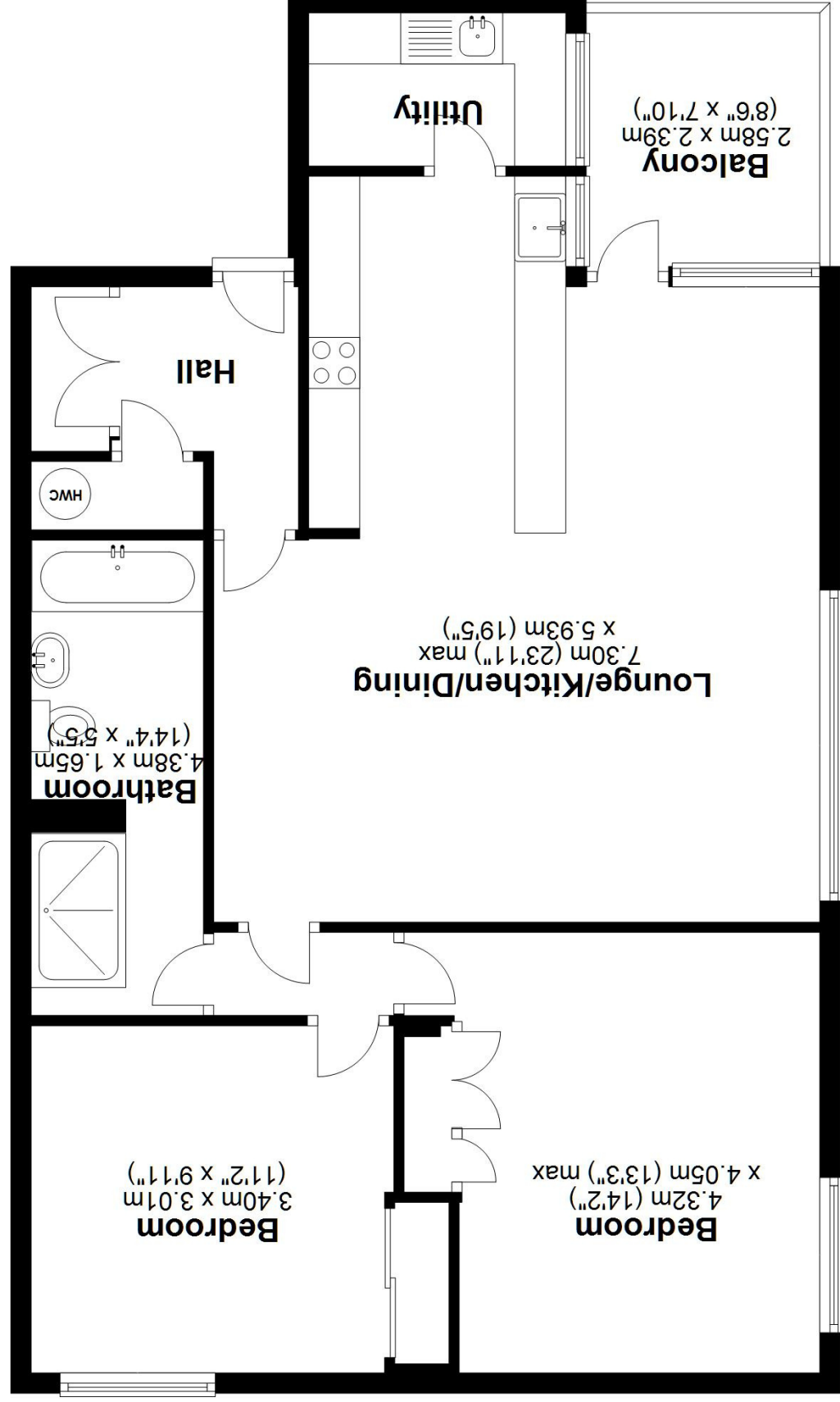
Get weekly insights and the best deals with our Mortgage Update, your shortcut to navigating the complex mortgage landscape confidently.



SCAN TO VIEW OUR WEEKLY FILMS & SUBSCRIBE



Floor Plan
Approx. 93.7 sq. metres (1008.8 sq. feet)



Total area: approx. 93.7 sq. metres (1008.8 sq. feet)

This floor plan is for illustration purposes only, this is not intended to be a measured/scaled survey or comply with RICS guidelines. All measurements (including total floor area) openings, orientation and floor area are approximate. No details are guaranteed, they cannot be relied upon for any purpose and do not form part of any agreement. A party must rely upon its own inspection(s). No responsibility is taken for any error, omission, or mis-statement.

Plan produced using PlanUp.