

Need a Mortgage in principle to make offers? Call us now for quick assistance!  
0121 775 0101



Do you need to sell? Start your journey now! Call us we can help.  
0121 775 0101



**SCAN FOR MORE INFO**  
**SIZE** - 1152 Sq Ft  
**TENURE** - Freehold  
**COUNCIL TAX** - Solihull MBC - C  
**BROADBAND** - Upload Max 1000 Mbps  
 Download Max 1000 Mbps  
**MOBILE** - O2  
**EPC** - D - 63  
**PARKING** - For at least 2 Cars  
**FLOODRISK** - Very Low  
**SERVICES** - Mains  
**COVENANTS** - N/A

## BARRINGTON ROAD

Offers in the region of £335,000

This delightful three bedroom property, which is tastefully presented throughout, is located a short walk from Olton Train Station with direct links to Birmingham and London.

### FEATURES

- Traditional Semi-Detached Property
- Dual Aspect Lounge/Dining Room
- Fitted Breakfast Kitchen
- Two Double Bedrooms with Fitted Wardrobes
- Third Good Sized Single Bedroom
- Family Bathroom with Separate WC
- Mature Rear Garden with Two Patio Areas
- Driveway Parking and Single Garage
- Walking Distanced to Olton Train Station
- Convenient Location

Are you an investor interested in expanding your portfolio?

Call 0121 775 0101 to provide your investment criteria for alerts.



SCAN TO VIEW OUR WEEKLY FILMS & SUBSCRIBE

### Sneak Peeks

Every week, we unveil "Sneak Peeks," a feature showcasing exclusive properties before they hit Rightmove and other platforms.

### The Landlord Club

Join our Landlord Club for weekly updates on legislation, market trends, and our Letting Director's 'Investment Pick of the Week' for optimal ROI.

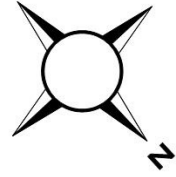
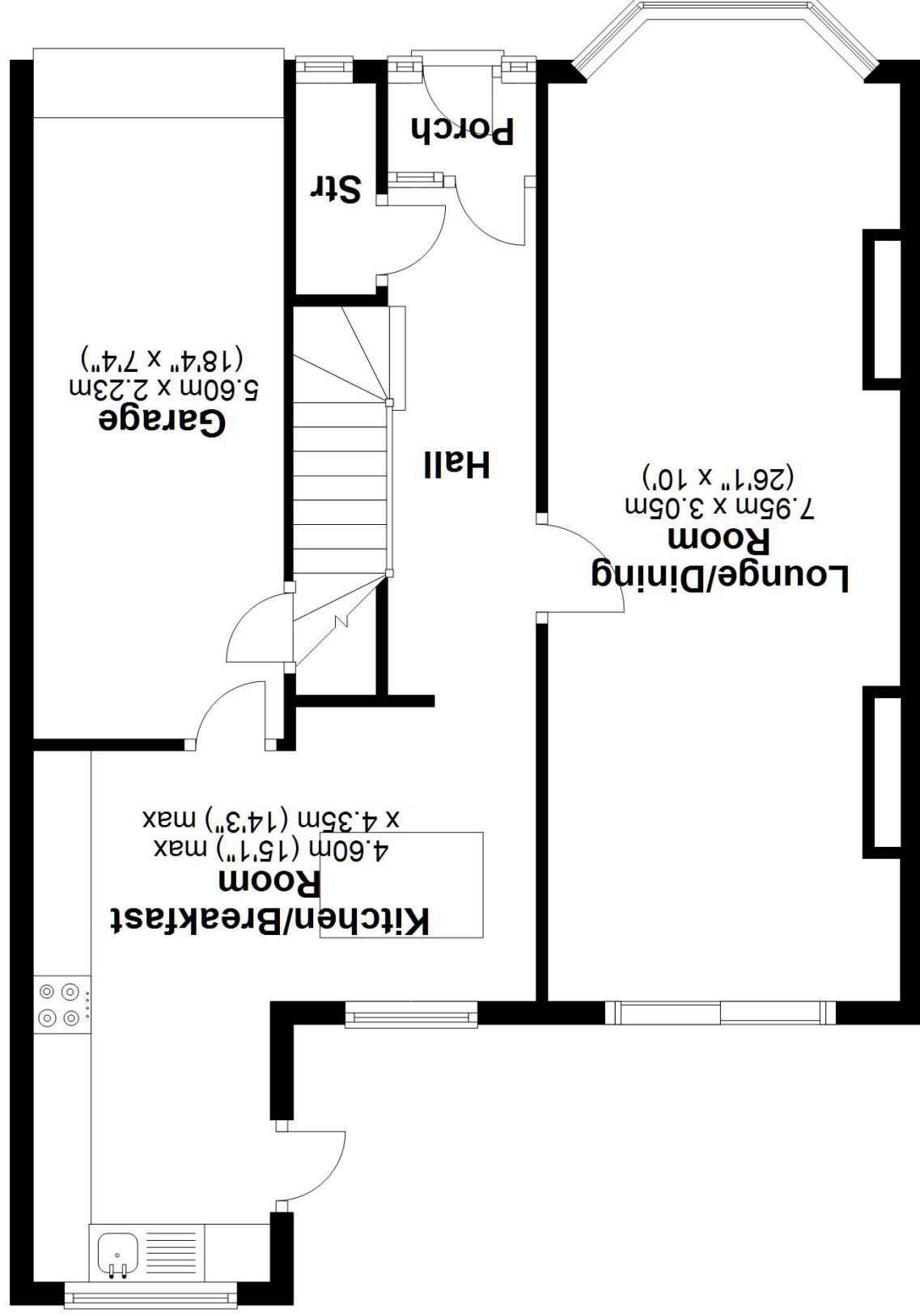
### HTSPMD

Tune into 'How's The Solihull Property Market Dom' weekly for a quick, insightful snapshot of the market.

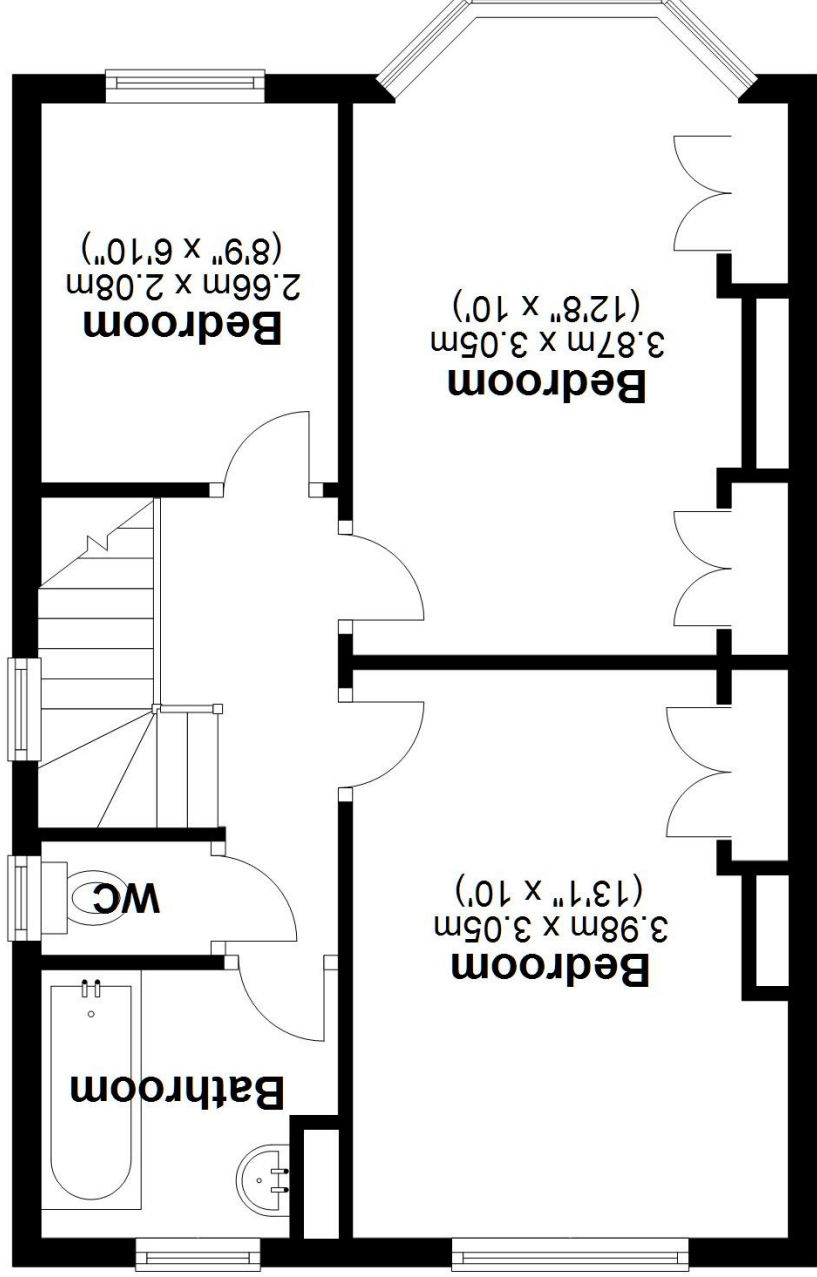
### The Mortgage Update

Get weekly insights and the best deals with our Mortgage Update, your shortcut to navigating the complex mortgage landscape confidently.

**Ground Floor**  
Approx. 65.1 sq. metres (700.7 sq. feet)



**First Floor**  
Approx. 42.0 sq. metres (451.6 sq. feet)



**Total area: approx. 107.1 sq. metres (1152.4 sq. feet)**

This floor plan is for illustration purposes only, this is not intended to be a measured/scaled survey or comply with RICS guidelines. All measurements (including total floor area) openings, orientation and floor area are approximate. No details are guaranteed, they cannot be relied upon for any purpose and do not form part of any agreement. A party must rely upon its own inspection(s). No responsibility is taken for any error, omission, or mis-statement. Plan produced using PlanUp.