

Need a Mortgage in principle to make offers? Call us now for quick assistance!
0121 775 0101



Do you need to sell? Start your journey now! Call us we can help.
01564 777 314



1 Gannaway, Knowle

Purchase Price £450,000



SCAN FOR MORE INFO
SIZE - 1508 Sq Ft
TENURE - Freehold + a Maintenance charge of £38.00 per month.
COUNCIL TAX - Solihull MBC - F
BROADBAND - Upload Max 1000 Mbps
 Download Max 1000 Mbps
MOBILE - EE Three O2 Vodafone
EPC - C
PARKING - Garage and parking to the front
FLOODRISK - Very Low
SERVICES - Mains
COVENANTS - N/A

Are you an investor interested in expanding your portfolio?

Call 01564 777 314 to provide your investment criteria for alerts.

A remarkable coach house in a private development. This two bedroom property, both with en-suites, is set in a highly sought after location midway between Knowle and Dorridge. With a large lounge and dining area, a fitted kitchen, and a garage with utility space, this home promises comfort with no upward chain. Perfect lock up and leave property.

FEATURES

- Coach House in Prime Location
- Two Double Bedrooms with En Suites
- Large Lounge and Dining Area
- Fitted Kitchen with Skylight
- Single Garage with Utility Space
- Access to Communal Garden
- No Upward Chain
- Arden Academy Catchment
- Midway between Knowle and Dorridge
- Perfect Lock Up and Leave Property

Sneak Peeks

Every week, we unveil "Sneak Peeks," a feature showcasing exclusive properties before they hit Rightmove and other platforms.

The Landlord Club

Join our Landlord Club for weekly updates on legislation, market trends, and our Letting Director's 'Investment Pick of the Week' for optimal ROI.

HTSPMD

Tune into 'How's The Solihull Property Market Dom' weekly for a quick, insightful snapshot of the market.

The Mortgage Update

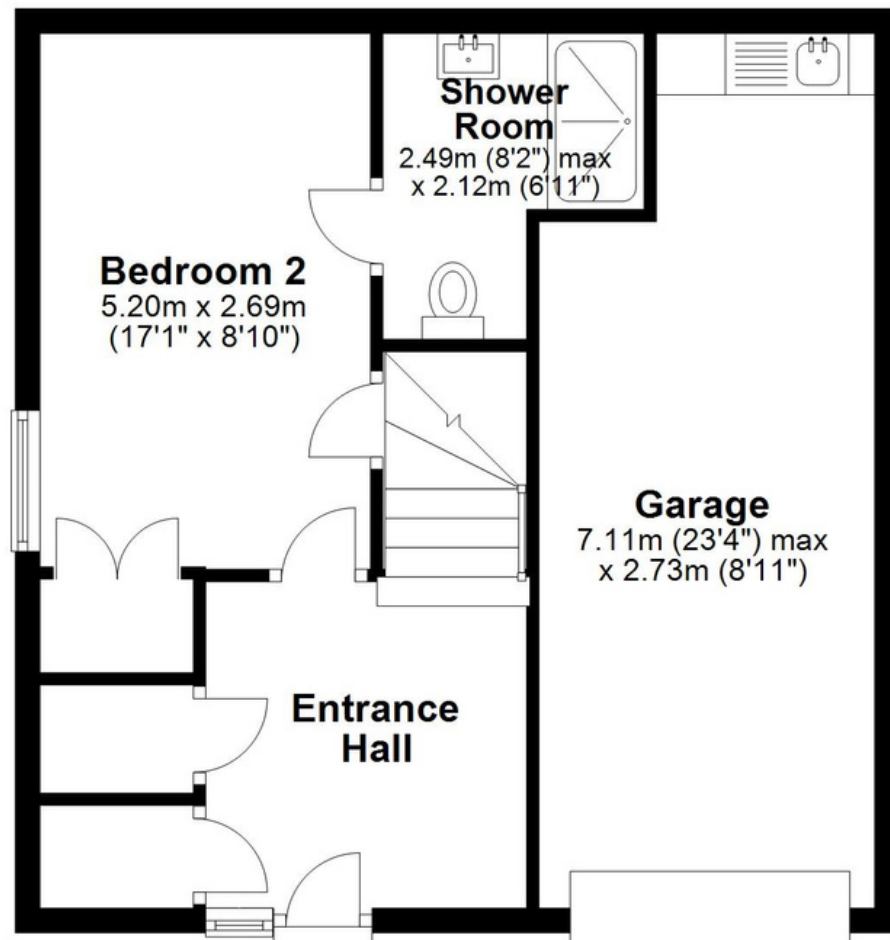
Get weekly insights and the best deals with our Mortgage Update, your shortcut to navigating the complex mortgage landscape confidently.



SCAN TO VIEW OUR WEEKLY FILMS & SUBSCRIBE

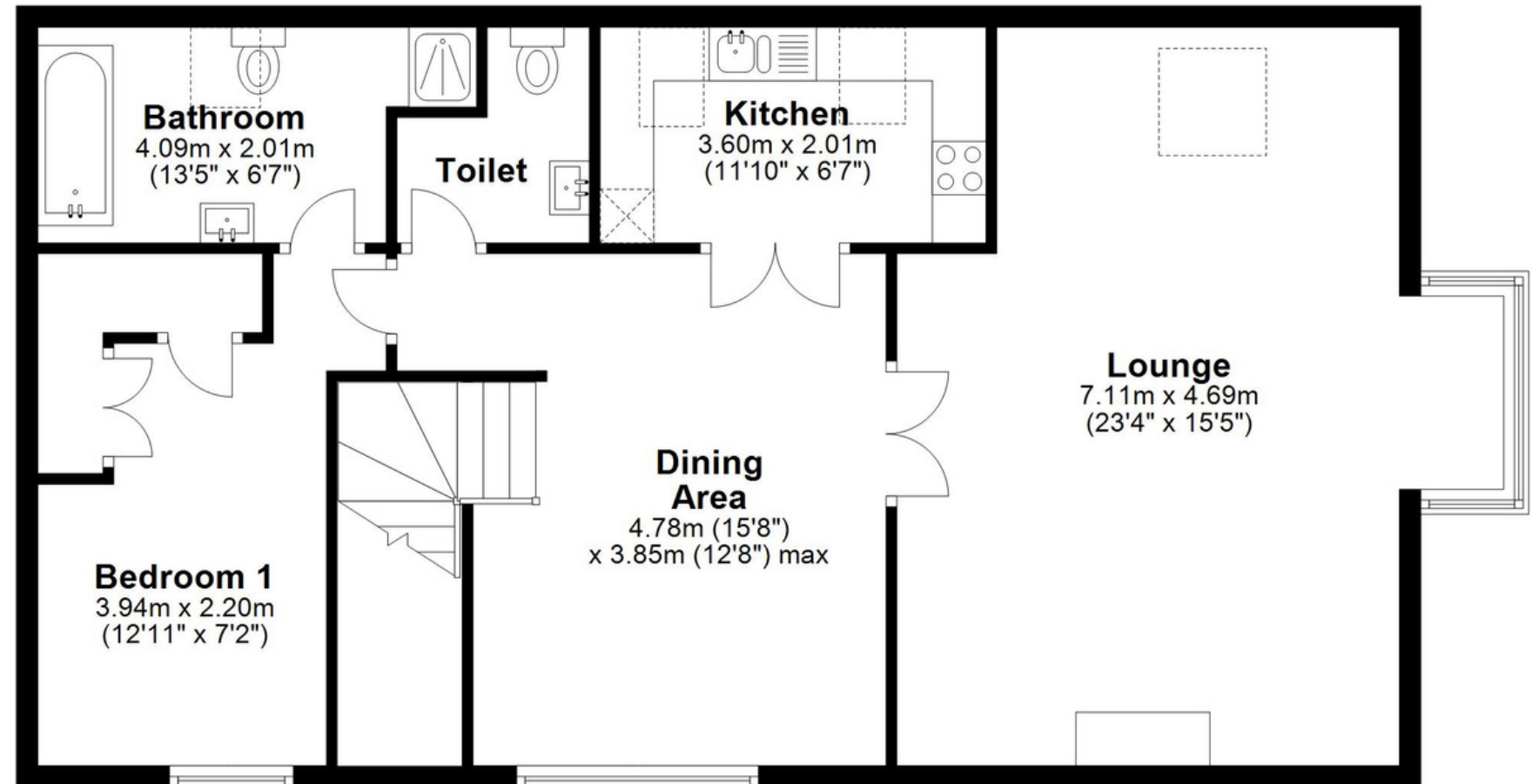
Ground Floor

Approx. 50.9 sq. metres (548.0 sq. feet)



First Floor

Approx. 89.3 sq. metres (960.8 sq. feet)



Total area: approx. 140.2 sq. metres (1508.8 sq. feet)

This floor plan is not to scale and is for illustration/marketing purposes only.
Plan produced using PlanUp.