



DM&Co.
— SALES & LETTINGS —

4 Carrera House Avenue
Road
Dorridge B93 8FJ

Luxury Two-Bedroom Apartment in Exclusive
Gated Development – Available Immediately!



DETAILS

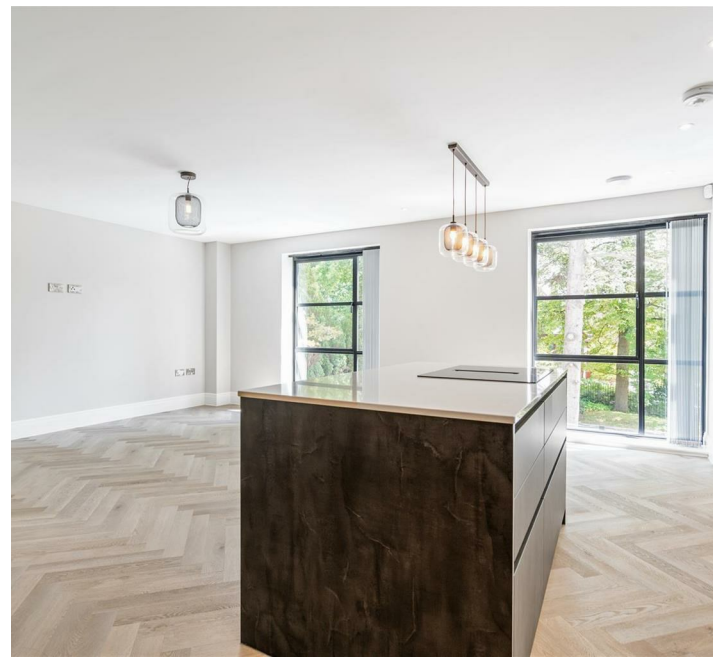
Set within the highly desirable Carrera House – a boutique development of just five premium residences – this first-floor apartment offers sophisticated, modern living in the heart of Dorridge.

With its bold Art Deco-inspired architecture and secure gated entrance, Carrera House delivers a unique blend of character and contemporary style. The property benefits from allocated resident and visitor parking, as well as beautifully maintained landscaped communal grounds.

Inside, the apartment features a spacious open-plan layout with large windows that flood the space with natural light. The high-specification kitchen, dining, and lounge areas flow seamlessly together, making it ideal for both everyday living and entertaining. Two generously sized double bedrooms include a principal suite with an en-suite bathroom, while a stylish family bathroom serves guests and the second bedroom.

The apartment also benefits from underfloor heating throughout, powered by an efficient combi boiler, and is accessed via both lift and staircase, all finished to a high standard. The attention to detail and quality of finish is consistent throughout the apartment and shared areas alike.

Solihull Council - Tax Band E



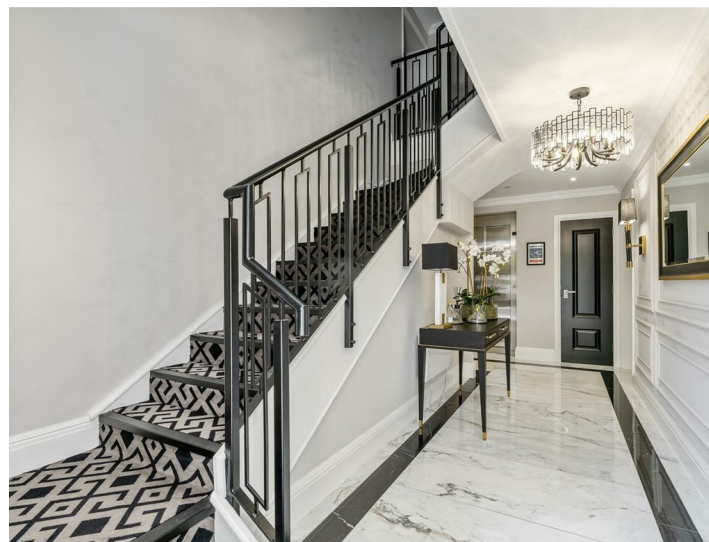
VIEWINGS

At short notice with DM & Co. Homes on
0121 775 0101 or by email
lettings@dmandcohomes.co.uk



LOCATION

Perfectly positioned just a short walk from Dorridge Station, a Sainsbury's supermarket, and a range of village amenities, the property also offers convenient access to Solihull, the M42 and M40 motorways, Birmingham International Airport, and direct rail services to Birmingham and London. This is a rare opportunity to rent a truly exceptional home in one of Solihull's most prestigious locations.



GENERAL INFORMATION

Mobile Coverage In Your Area - EE, Vodafone, Three, O2

Broadband Coverage In Your Area - Openreach, Sky

Basic - 16 Mbps

Superfast - 55 Mbps

Ultrafast - 1800 Mbps



Agents Note: Whilst every care has been taken to prepare these sales particulars, they are for guidance purposes only. All measurements are approximate and are for general guidance purposes only and whilst every care has been taken to ensure their accuracy, they should not be relied upon and potential buyers are advised to recheck the measurements.

FEATURES

- Luxury Two-Bedroom First-Floor Apartment In Exclusive Gated Development
- Spacious Open-Plan Living Area With High-Spec Kitchen, Dining, And Lounge
- Two Generous Double Bedrooms Including En-Suite To Principal Room
- Underfloor Heating Throughout
- Secure Gated Entrance With Allocated Resident Parking With EV Charging Points
- Prime Dorridge Location Within Walking Distance Of Station, Shops, And Amenities
- Holding Deposit - £691.00
- Security Deposit - £3455.76
- Offered Unfurnished
- Available Now

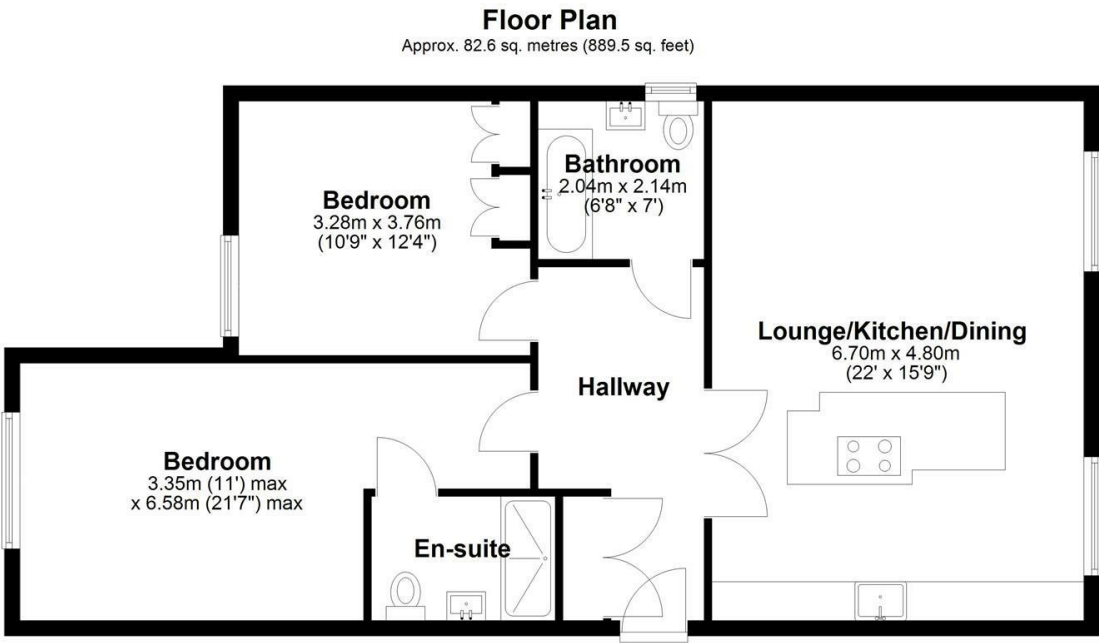
VIEWING

Book a viewing with Sole Agents DM & Co.
Premium by phone or email:

📞 0121 775 0101

@ lettings@dmandcohomes.co.uk

Agents Note: Whilst every care has been taken to prepare these salesparticulars, they are for guidance purposes only. All measurements are approximate and are for general guidance purposes only and whilst every care has been taken to ensure their accuracy, they should not be relied upon and potential buyers are advised to recheck the measurements



Total area: approx. 82.6 sq. metres (889.5 sq. feet)

This floor plan is for illustration purposes only, this is not intended to be a measured/scaled survey or comply with RICS guidelines. All measurements (including total floor area) openings, orientation and floor area are approximate. No details are guaranteed, they cannot be relied upon for any purpose and do not form part of any agreement. A party must rely upon its own inspection(s). No responsibility is taken for any error, omission, or mis-statement.
Plan produced using PlanUp.

