

Need a Mortgage in principle
to make offers? Call us now
for quick assistance!
0121 775 0101



Do you need to sell?
Start your journey now!
Call us we can help.
0121 775 0101



SCAN FOR MORE INFO
SIZE - 1442 Sq Ft
TENURE - Freehold
COUNCIL TAX - Solihull MBC - E
BROADBAND - Upload Max 1000Mbps
Download Max 1000Mbps
MOBILE - EE Three O2 Vodafone
EPC - D - 55
PARKING - For at least 2 Cars
FLOODRISK - Very Low
SERVICES - Mains
COVENANTS - N/A

BURMAN ROAD

Shirley, B90

Located on the popular Burman Road, this traditional link detached house has recently been refurbished and presents a fantastic opportunity to further extend (STPP). Offered with no upward chain, this house offers ample space for comfortable living and is ready to move straight into.

FEATURES

- Refurbished Property with Potential to Extend (STPP)
- Two Reception Rooms
- Exceptionally Large Conservatory
- Well Equipped Kitchen
- Utility & Guest Cloakroom
- Two Good Sized Double Bedrooms & Third Single
- Modern Four Piece Family Bathroom
- Private, Mature Rear Garden
- Driveway Parking & Single Garage
- Convenient Location

Are you an investor
interested in expanding your
portfolio?

Call **0121 775 0101** to provide your
investment criteria for alerts.



SCAN TO VIEW OUR
WEEKLY FILMS &
SUBSCRIBE



Sneak Peeks

Every week, we unveil "Sneak Peeks," a feature showcasing exclusive properties before they hit Rightmove and other platforms.



The Landlord Club

Join our Landlord Club for weekly updates on legislation, market trends, and our Letting Director's 'Investment Pick of the Week' for optimal ROI.



HTSPMD

Tune into 'How's The Solihull Property Market Dom' weekly for a quick, insightful snapshot of the market.

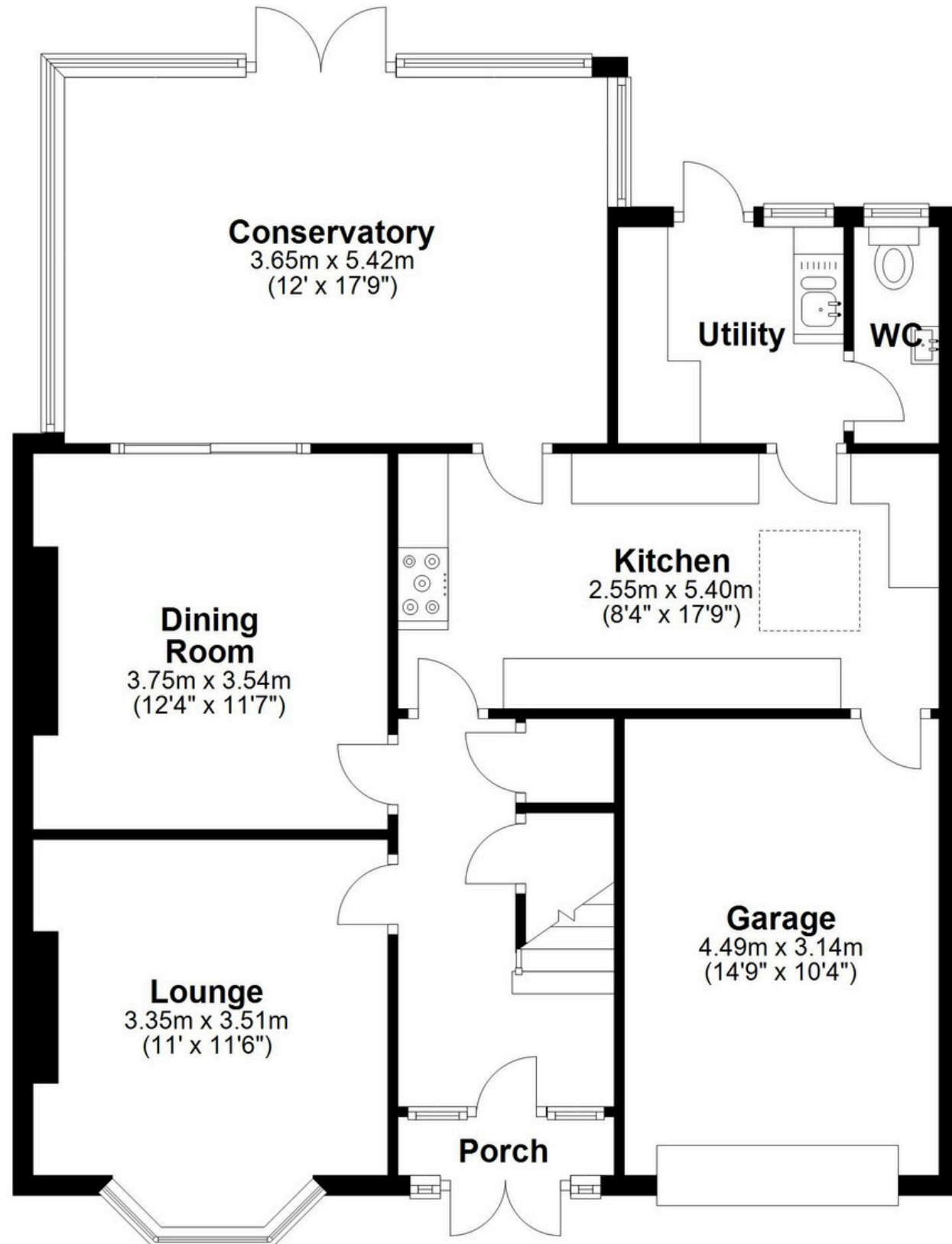


The Mortgage Update

Get weekly insights and the best deals with our Mortgage Update, your shortcut to navigating the complex mortgage landscape confidently.

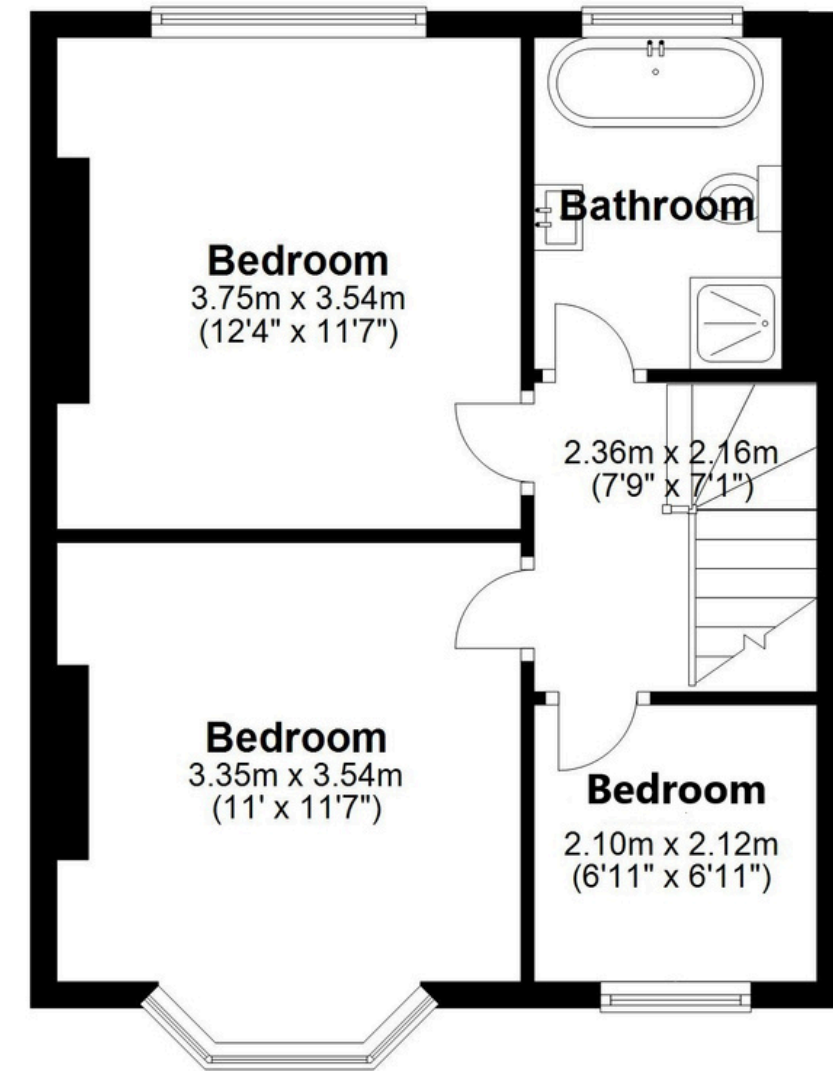
Ground Floor

Approx. 92.8 sq. metres (999.3 sq. feet)



First Floor

Approx. 41.2 sq. metres (443.4 sq. feet)



Total area: approx. 134.0 sq. metres (1442.7 sq. feet)

This floor plan is for illustration purposes only, this is not intended to be a measured/scaled survey or comply with RICS guidelines. All measurements (including total floor area) openings, orientation and floor area are approximate. No details are guaranteed, they cannot be relied upon for any purpose and do not form part of any agreement. A party must rely upon its own inspection(s). No responsibility is taken for any error, omission, or mis-statement.

Plan produced using PlanUp.