

Need a Mortgage in principle
to make offers? Call us now
for quick assistance!
0121 775 0101



Do you need to sell?
Start your journey now!
Call us we can help.
0121 775 0101



CAMPDEN GREEN

Solihull, B92

SCAN FOR MORE INFO
SIZE - 825 Sq Ft
TENURE - Freehold
COUNCIL TAX - Solihull MBC - B
BROADBAND - Upload Max 1000Mbps
Download Max 1000Mbps
MOBILE - EE O2 Vodafone
EPC - C - 72
PARKING - For at least 2 Cars
FLOODRISK - Very Low
SERVICES - Mains
COVENANTS - N/A

Are you an investor
interested in expanding your
portfolio?

**Call 0121 775 0101 to provide your
investment criteria for alerts.**

Welcome to this charming semi-detached house in the sought-after Campden Green, Solihull. This beautifully refurbished property, built in the 1950s, is a perfect opportunity for first-time buyers or savvy investors looking for a delightful home. Don't miss out on the opportunity to own this meticulously renovated home in a prime location.

FEATURES

- Fully Refurbished Family Home
- Tastefully Presented Throughout
- Dual Aspect Lounge/Dining Room
- Warm Roof Conservatory
- Fitted Kitchen with High Gloss Units
- Three Bedrooms, Two with Fitted Wardrobes
- Modern Family Bathroom
- Driveway Parking for Two Vehicles
- Landscaped Rear Garden
- Convenient Location



SCAN TO **VIEW OUR
WEEKLY FILMS &
SUBSCRIBE**

Sneak Peeks

Every week, we unveil "Sneak Peeks," a feature showcasing exclusive properties before they hit Rightmove and other platforms.

The Landlord Club

Join our Landlord Club for weekly updates on legislation, market trends, and our Letting Director's 'Investment Pick of the Week' for optimal ROI.

HTSPMD

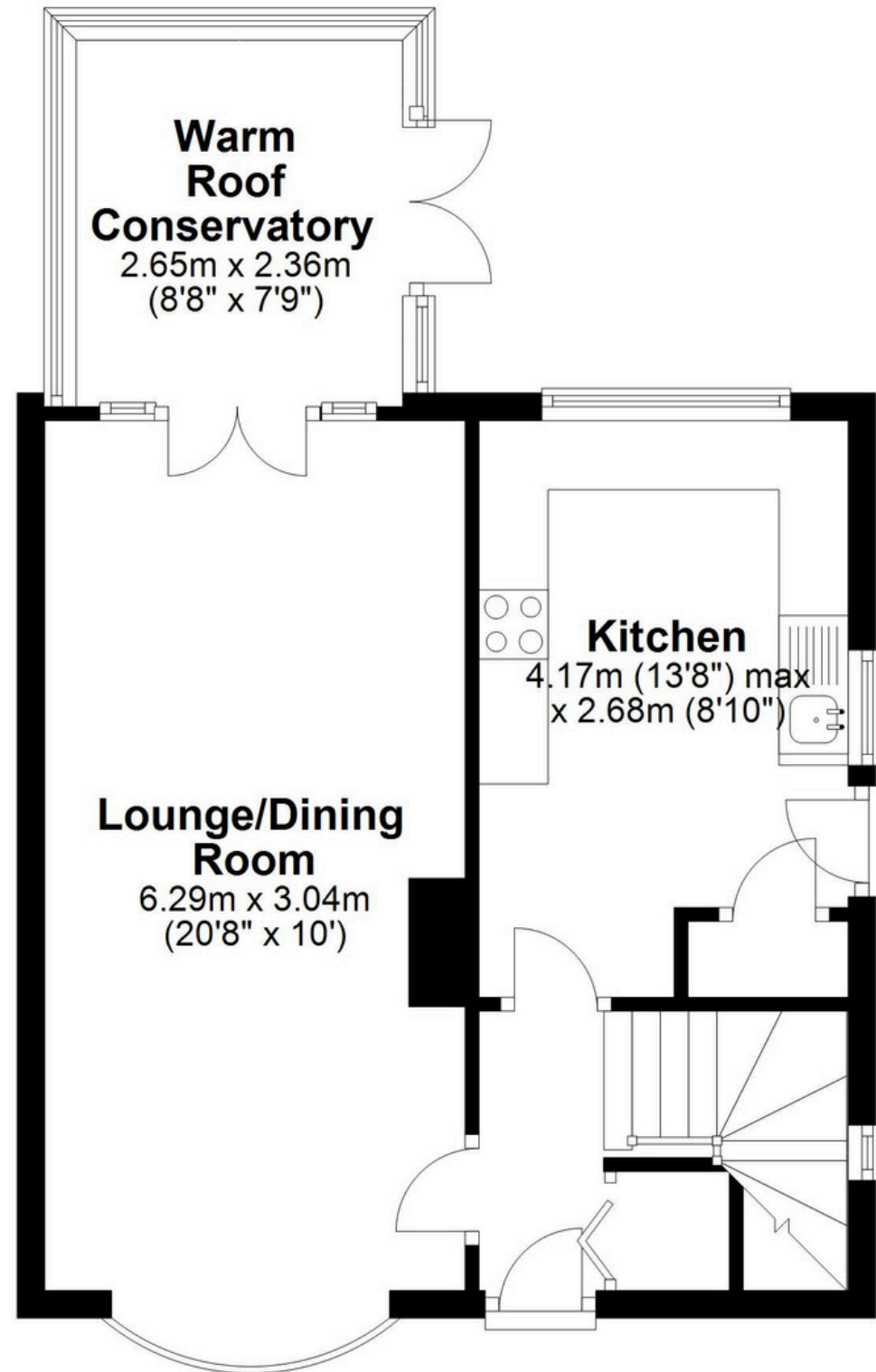
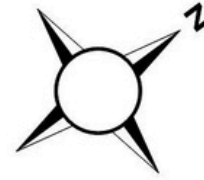
Tune into 'How's The Solihull Property Market Dom' weekly for a quick, insightful snapshot of the market.

The Mortgage Update

Get weekly insights and the best deals with our Mortgage Update, your shortcut to navigating the complex mortgage landscape confidently.

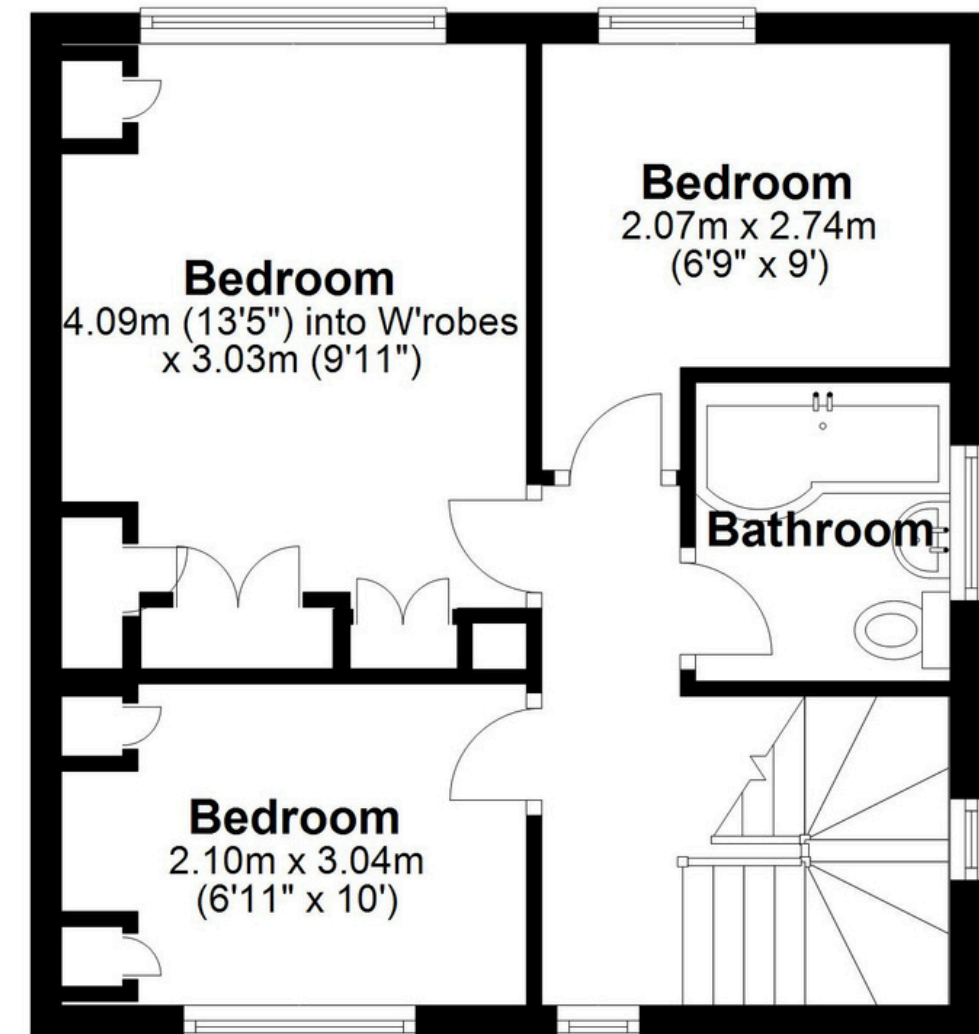
Ground Floor

Approx. 40.7 sq. metres (438.2 sq. feet)



First Floor

Approx. 36.0 sq. metres (387.5 sq. feet)



Total area: approx. 76.7 sq. metres (825.7 sq. feet)

This floor plan is for illustration purposes only, this is not intended to be a measured/scaled survey or comply with RICS guidelines. All measurements (including total floor area) openings, orientation and floor area are approximate. No details are guaranteed, they cannot be relied upon for any purpose and do not form part of any agreement. A party must rely upon its own inspection(s). No responsibility is taken for any error, omission, or mis-statement.

Plan produced using PlanUp.