

Need a Mortgage in principle
to make offers? Call us now
for quick assistance!
0121 775 0101



Do you need to sell?
Start your journey now!
Call us we can help.
0121 775 0101



SCAN FOR MORE INFO
SIZE - 2035 Sq Ft
TENURE - Freehold
COUNCIL TAX - Solihull Metropolitan Borough Council - F
BROADBAND - Upload Max 1000Mbps
Download Max 1800Mbps
MOBILE - O2 Vodafone
EPC - B - 83D - 55
PARKING - For Multiple Vehicles
FLOODRISK - Very Low
SERVICES - Mains
COVENANTS - N/A

Are you an investor
interested in expanding your
portfolio?

**Call 0121 775 0101 to provide your
investment criteria for alerts.**

GENTLESHAW LANE

Solihull, B91

Nestled on Gentleshaw Lane, this substantial detached family home offers an impressive 2,035 square feet of living space, perfect for those seeking comfort and style in a desirable area. This home is an exceptional opportunity for families looking for space, style and a peaceful setting in Solihull.

FEATURES

- Spacious Detached Family Home
- Dual Aspect Lounge with Dining Area
- Breakfast Kitchen with Utility Room
- Sun Room with Balcony
- Principal Bedroom with En-Suite Shower Room
- Three Further Double Bedrooms
- Family Bathroom
- Secure Driveway Parking Behind Gates with Double Garage
- Private Long, Mature Rear Garden with Open Views Beyond
- Convenient Location to Solihull Town Centre & M42



SCAN TO **VIEW OUR**
WEEKLY FILMS &
SUBSCRIBE

Sneak Peeks

Every week, we unveil "Sneak Peeks," a feature showcasing exclusive properties before they hit Rightmove and other platforms.

The Landlord Club

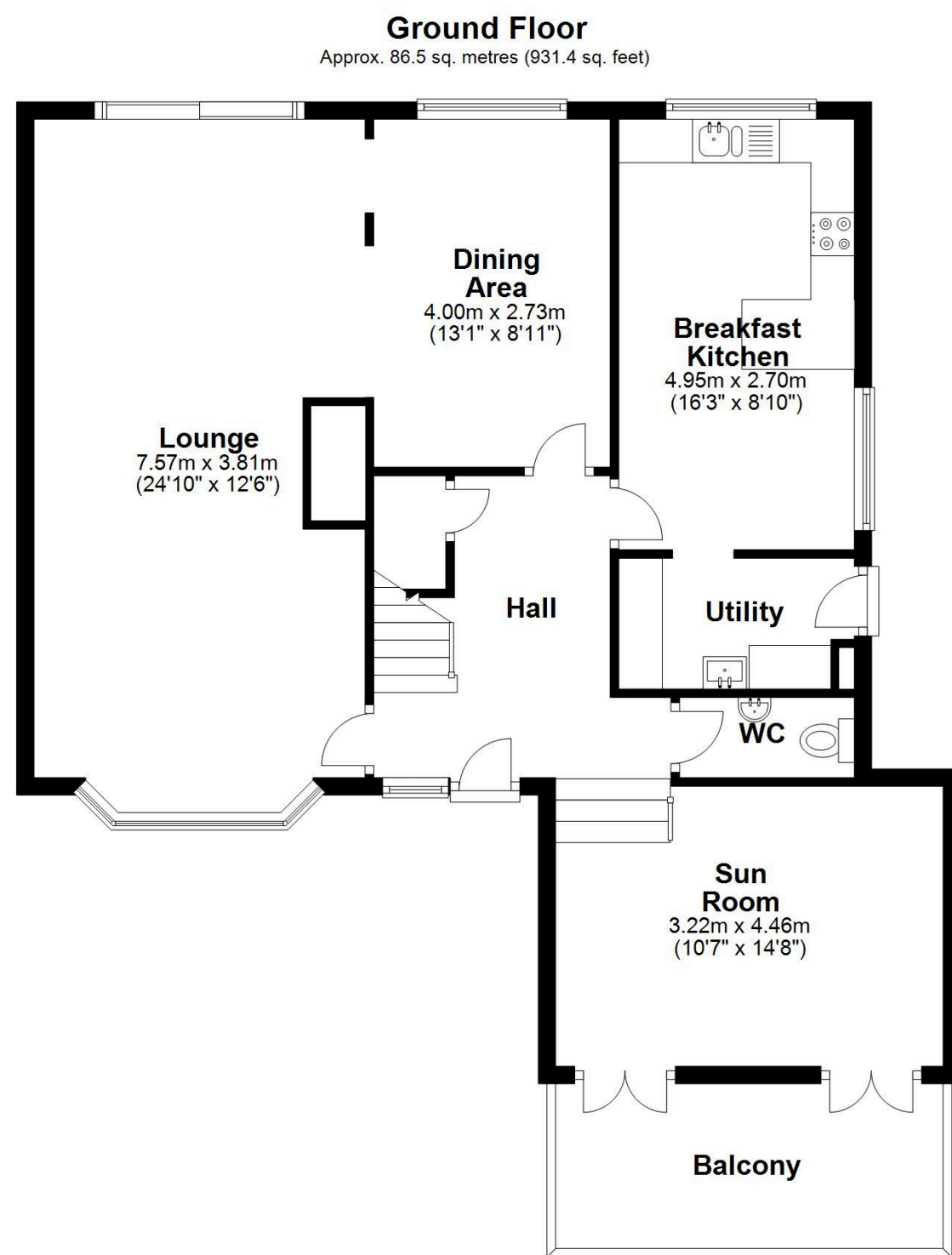
Join our Landlord Club for weekly updates on legislation, market trends, and our Letting Director's 'Investment Pick of the Week' for optimal ROI.

HTSPMD

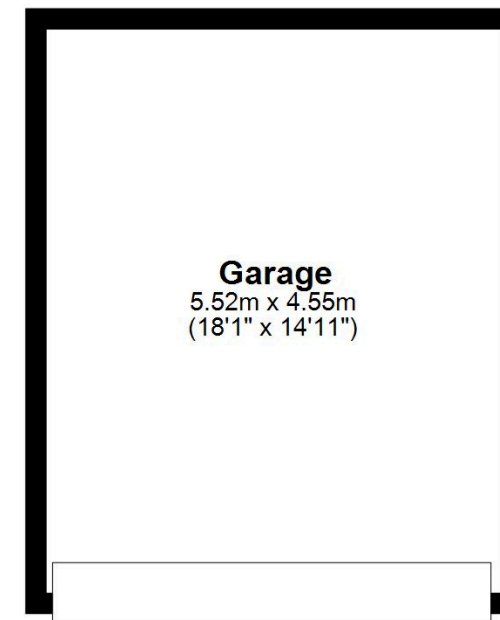
Tune into 'How's The Solihull Property Market Dom' weekly for a quick, insightful snapshot of the market.

The Mortgage Update

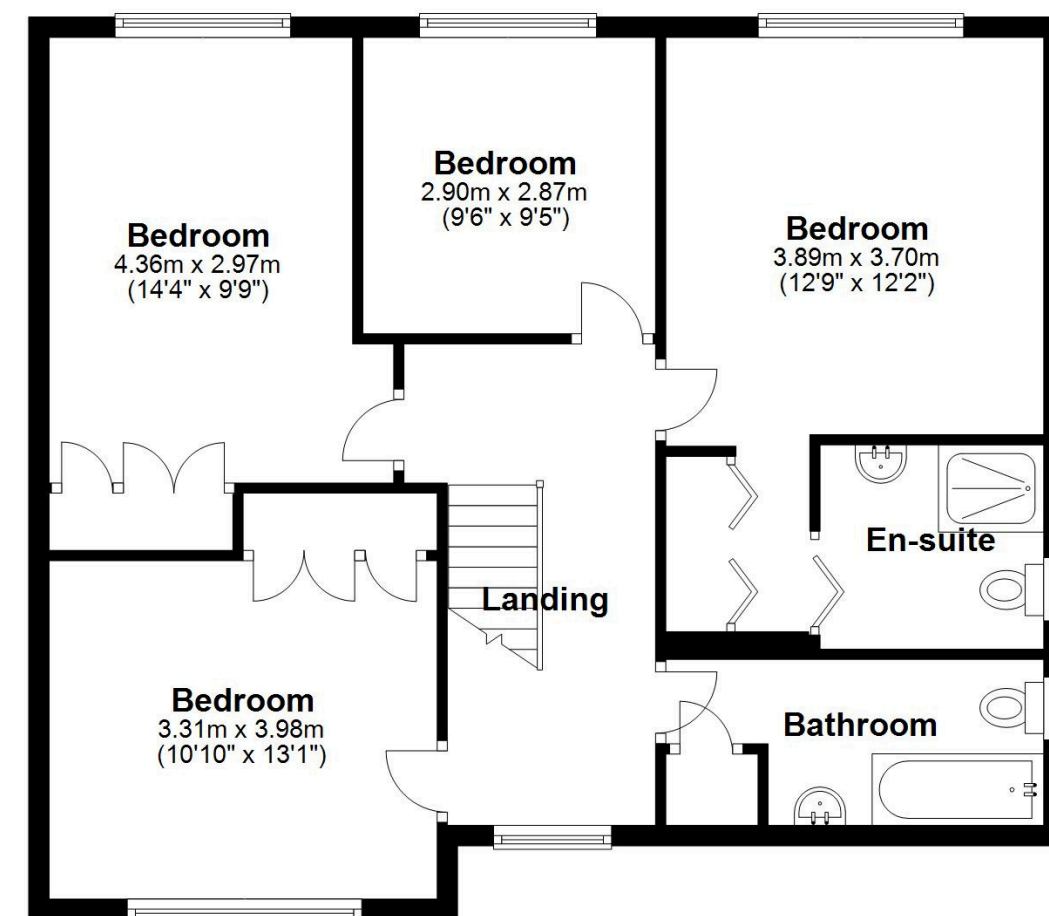
Get weekly insights and the best deals with our Mortgage Update, your shortcut to navigating the complex mortgage landscape confidently.



Garage (below Sun Room)
Approx. 24.6 sq. metres (264.9 sq. feet)



First Floor
Approx. 78.0 sq. metres (839.4 sq. feet)



Total area: approx. 189.1 sq. metres (2035.7 sq. feet)

This floor plan is for illustration purposes only, this is not intended to be a measured/scaled survey or comply with RICS guidelines. All measurements (including total floor area) openings, orientation and floor area are approximate. No details are guaranteed, they cannot be relied upon for any purpose and do not form part of any agreement. A party must rely upon its own inspection(s). No responsibility is taken for any error, omission, or mis-statement.
Plan produced using PlanUp.