

Need a Mortgage in principle
to make offers? Call us now
for quick assistance!
0121 775 0101



Do you need to sell?
Start your journey now!
Call us we can help.
01564 777 314



SCAN FOR MORE INFO
SIZE - 2136 Sq Ft
TENURE - Freehold
COUNCIL TAX - Solihull Metropolitan Borough Council - F
BROADBAND - Upload Max 1000Mbps
Download Max 1000Mbps
MOBILE - O2
EPC - C - 76
PARKING - Single Garage & Driveway Parking
FLOODRISK - Very Low
SERVICES - Mains
COVENANTS - N/A

Are you an investor
interested in expanding your
portfolio?

**Call 01564 777 314 to provide your
investment criteria for alerts.**

1 Hallcroft Way Knowle, B93

This extended and renovated five bedroom detached family home in Knowle is set back from the road with a large driveway. Featuring a stunning open plan kitchen diner, spacious living areas and a summerhouse with a fully equipped bar, this home is perfect for modern family living and entertaining.

FEATURES

- Five Spacious Double Bedrooms
- Large Open Plan Kitchen/Diner
- Bright Living Room with Feature Panelling
- Principal Bedroom Suite with Dressing Room & Juliet Balcony
- Landscaped Garden with Patio Area
- Summerhouse with Fully Equipped Bar
- Integral Single Garage with Driveway Parking
- Potential for Detached Double Garage (STPP)
- Excellent Location in Knowle
- Arden Academy Catchment



SCAN TO **VIEW OUR
WEEKLY FILMS &
SUBSCRIBE**

Sneak Peeks

Every week, we unveil "Sneak Peeks," a feature showcasing exclusive properties before they hit Rightmove and other platforms.

The Landlord Club

Join our Landlord Club for weekly updates on legislation, market trends, and our Letting Director's 'Investment Pick of the Week' for optimal ROI.

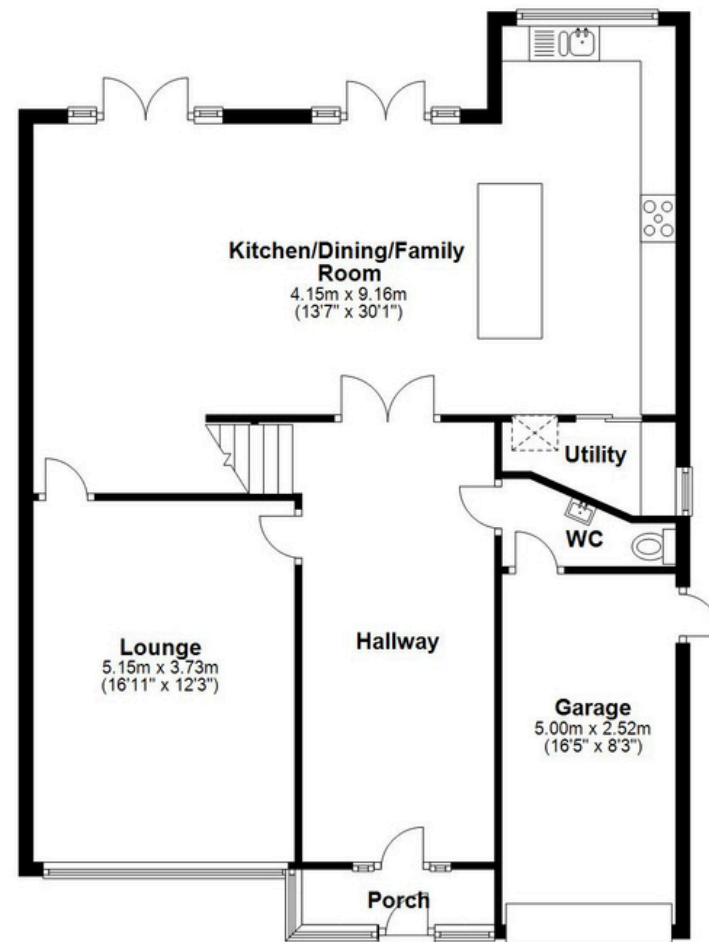
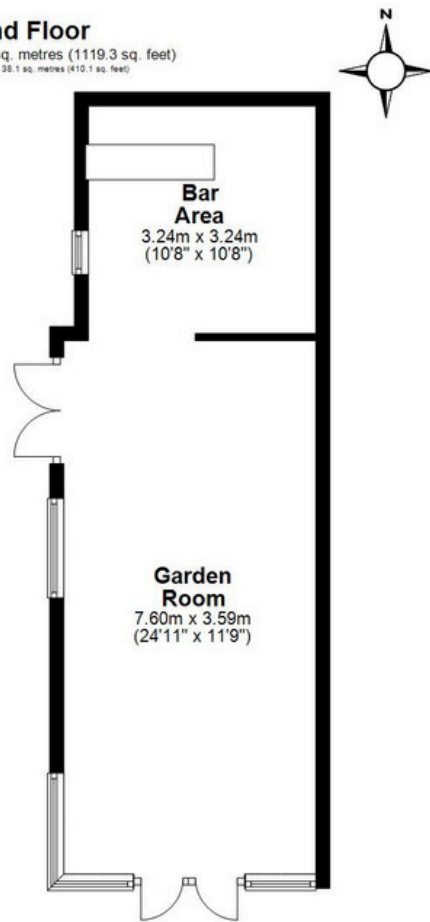
HTSPMD

Tune into 'How's The Solihull Property Market Dom' weekly for a quick, insightful snapshot of the market.

The Mortgage Update

Get weekly insights and the best deals with our Mortgage Update, your shortcut to navigating the complex mortgage landscape confidently.

Ground Floor
Main area: approx. 104.0 sq. metres (1119.3 sq. feet)
Plus garden rooms: approx. 38.1 sq. metres (410.1 sq. feet)



Main area: Approx. 198.5 sq. metres (2136.1 sq. feet)
Plus garden rooms: approx. 38.1 sq. metres (410.1 sq. feet)

This floor plan is for illustration purposes only, this is not intended to be a measured/scaled survey or comply with RICS guidelines. All measurements (including total floor area) openings, orientation and floor area are approximate. No details are guaranteed, they cannot be relied upon for any purpose and do not form part of any agreement. A party must rely upon its own inspection(s). No responsibility is taken for any error, omission, or mis-statement.
Plan produced using PlanUp.

First Floor
Approx. 94.5 sq. metres (1016.9 sq. feet)

