

Need a Mortgage in principle
to make offers? Call us now
for quick assistance!
0121 775 0101



Do you need to sell?
Start your journey now!
Call us we can help.
0121 775 0101



SEVINGTON CLOSE

Hillfield, B91

SCAN FOR MORE INFO
SIZE - 1066 Sq Ft
TENURE - Freehold
COUNCIL TAX - Solihull Metropolitan Borough Council - E
BROADBAND - Upload Max 1000Mbps
Download Max 1800Mbps
MOBILE - O2 Vodafone
EPC - D - 64
PARKING - For at least 2 Cars
FLOODRISK - Very Low
SERVICES - Mains
COVENANTS - N/A

Located in a cul-de-sac within the sought-after Hillfield development of Solihull, this beautifully presented detached house offers a perfect blend of comfort and modern living. This charming home is perfect for families or professionals seeking a serene yet convenient location, with excellent local amenities and transport links nearby.

FEATURES

- Beautifully Presented Detached House
- Potential to Extend (STPP)
- Bright Lounge
- Kitchen./Dining Room with Conservatory
- Two Double Bedrooms with Fitted Wardrobes
- Good Sized Third Single Bedroom
- Family Bathroom
- Private Low Maintenance Rear Garden
- Driveway Parking & Single Garage
- Excellent Location

Are you an investor
interested in expanding your
portfolio?

Call **0121 775 0101** to provide your
investment criteria for alerts.



SCAN TO **VIEW OUR**
WEEKLY FILMS &
SUBSCRIBE

Sneak Peeks

Every week, we unveil "Sneak Peeks," a feature showcasing exclusive properties before they hit Rightmove and other platforms.

The Landlord Club

Join our Landlord Club for weekly updates on legislation, market trends, and our Letting Director's 'Investment Pick of the Week' for optimal ROI.

HTSPMD

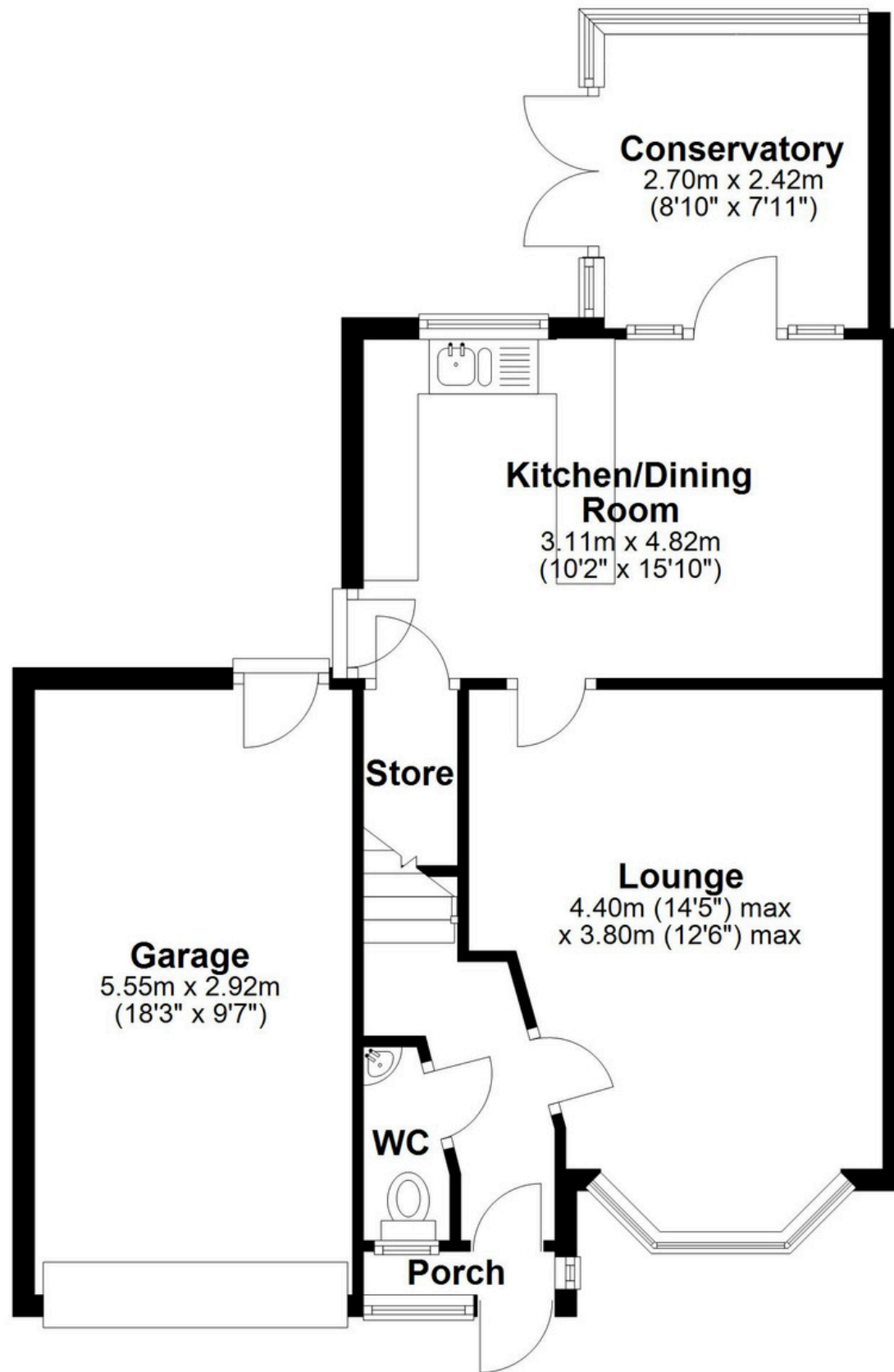
Tune into 'How's The Solihull Property Market Dom' weekly for a quick, insightful snapshot of the market.

The Mortgage Update

Get weekly insights and the best deals with our Mortgage Update, your shortcut to navigating the complex mortgage landscape confidently.

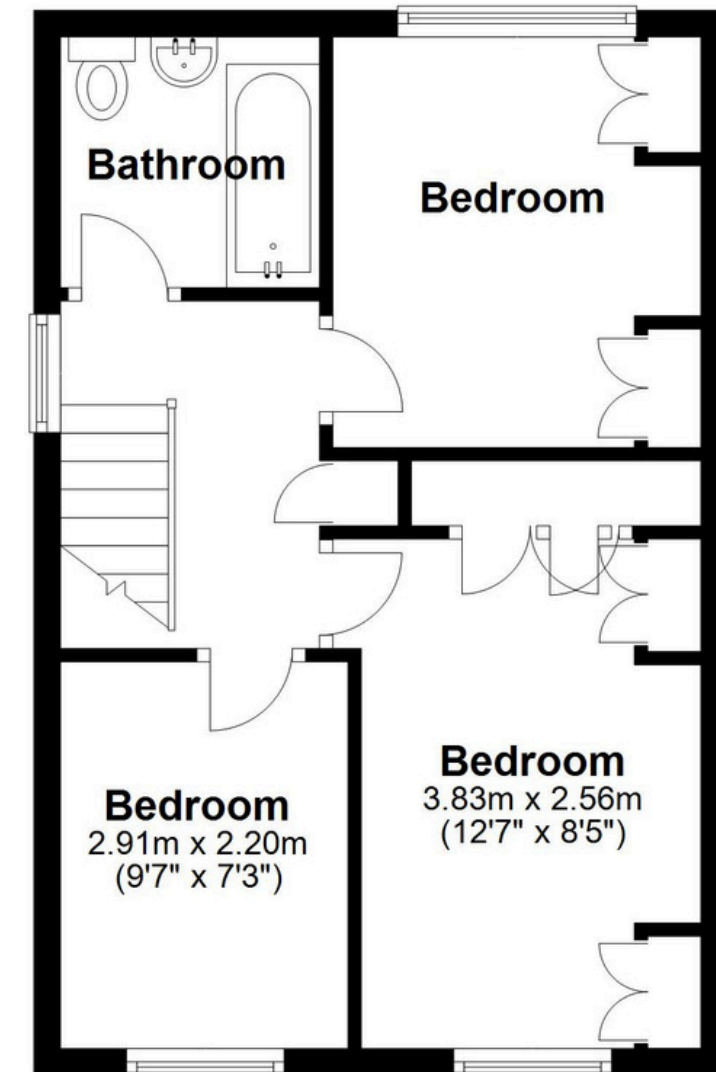
Ground Floor

Approx. 62.3 sq. metres (670.7 sq. feet)



First Floor

Approx. 36.8 sq. metres (395.9 sq. feet)



Total area: approx. 99.1 sq. metres (1066.6 sq. feet)

This floor plan is for illustration purposes only, this is not intended to be a measured/scaled survey or comply with RICS guidelines. All measurements (including total floor area) openings, orientation and floor area are approximate. No details are guaranteed, they cannot be relied upon for any purpose and do not form part of any agreement. A party must rely upon its own inspection(s). No responsibility is taken for any error, omission, or mis-statement.

Plan produced using PlanUp.