

Need a Mortgage in principle
to make offers? Call us now
for quick assistance!
0121 775 0101



Do you need to sell?
Start your journey now!
Call us we can help.
01564 777 314



SCAN FOR MORE INFO
SIZE - 613 Sq Ft
TENURE - Leasehold
SERVICE CHARGE - £3,580 per annum paid half yearly
COUNCIL TAX - Solihull MBC - D
BROADBAND - Upload Max 1000Mbps
Download Max 1800Mbps
MOBILE - EE
EPC - D - 65
PARKING - Ample Parking Available
FLOODRISK - Very Low
SERVICES - Mains
COVENANTS - N/A

Are you an investor
interested in expanding your
portfolio?
Call 01564 777 314 to provide your
investment criteria for alerts.

MICHAEL BLANNING GARDENS

Dorridge, B93

A well-presented semi-detached bungalow, exclusively for the over 58's, situated in a private development in Dorridge. Boasting a contemporary kitchen, bright lounge with conservatory, walk-in shower and a private terrace, this home is within walking distance of Dorridge Station and available with no upward chain.

FEATURES

- No Upward Chain
- Exclusively for the Over 58's
- Tastefully Presented Semi-Detached Bungalow
- Modern Breakfast Kitchen
- Bright Lounge with Conservatory
- Principal Double Bedroom
- Second Single Bedroom/Dining Room
- Shower Room
- South Facing Communal Gardens
- Walking Distance to Dorridge Village Centre



SCAN TO **VIEW OUR**
WEEKLY FILMS &
SUBSCRIBE

Sneak Peeks

Every week, we unveil "Sneak Peeks," a feature showcasing exclusive properties before they hit Rightmove and other platforms.

The Landlord Club

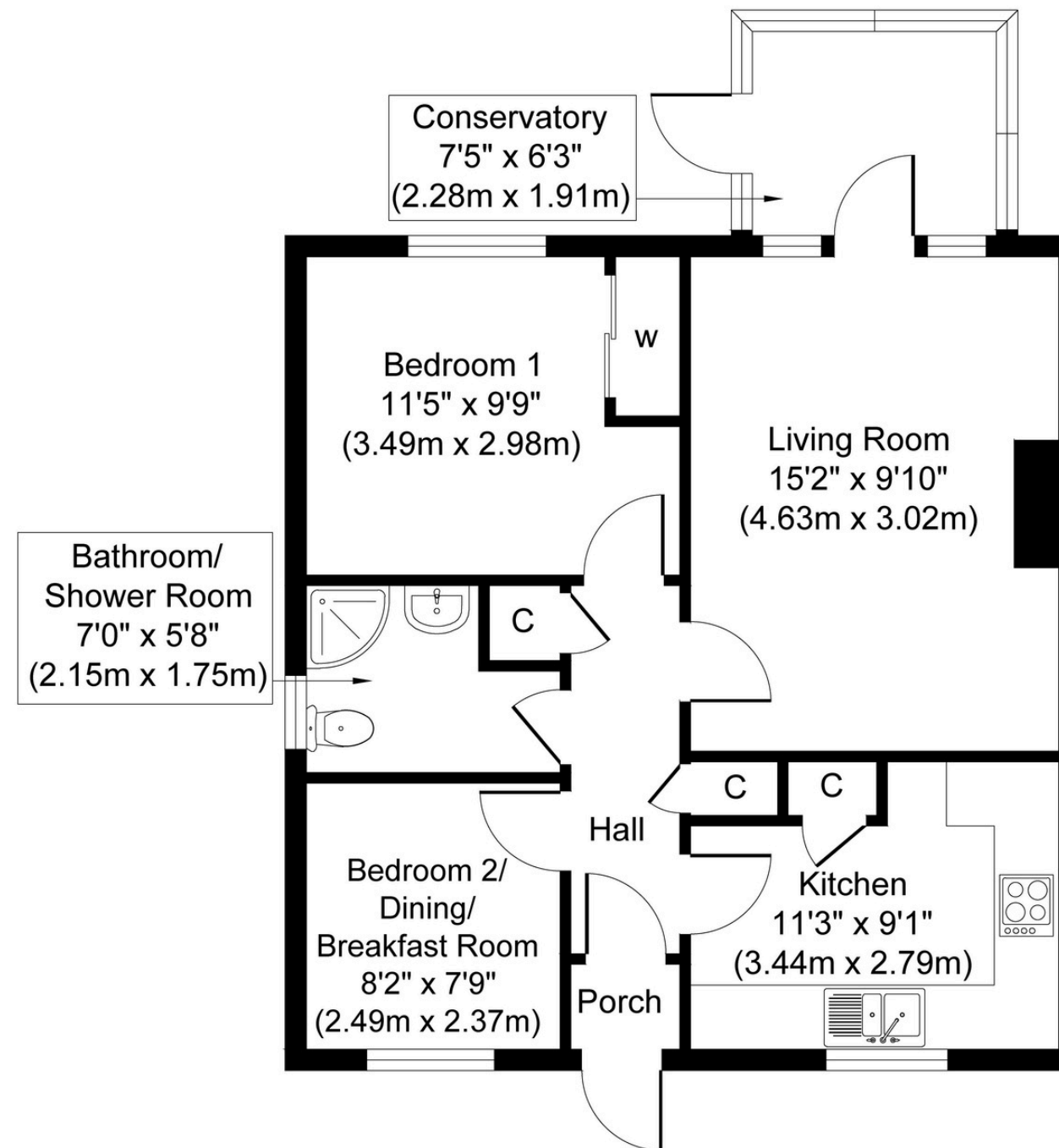
Join our Landlord Club for weekly updates on legislation, market trends, and our Letting Director's 'Investment Pick of the Week' for optimal ROI.

HTSPMD

Tune into 'How's The Solihull Property Market Dom' weekly for a quick, insightful snapshot of the market.

The Mortgage Update

Get weekly insights and the best deals with our Mortgage Update, your shortcut to navigating the complex mortgage landscape confidently.



Approximate Floor Area
613 sq. ft
(56.97 sq. m)

Whilst every attempt has been made to ensure the accuracy of the floor plan contained here, measurements of doors, windows, rooms and any other items are approximate and no responsibility is taken for any error, omission, or mis-statement. The measurements should not be relied upon for valuation, transaction and/or funding purposes. This plan is for illustrative purposes only and should be used as such by any prospective purchaser or tenant.

The services, systems and appliances shown have not been tested and no guarantee as to their operability or efficiency can be given.

Copyright V360 Ltd 2025 | www.houseviz.com