

Need a Mortgage in principle
to make offers? Call us now
for quick assistance!
0121 775 0101



Do you need to sell?
Start your journey now!
Call us we can help.
0121 775 0101



SCAN FOR MORE INFO
SIZE - 1101 Sq Ft
TENURE - Share of the Freehold
SERVICE CHARGE - £4,200 per annum
COUNCIL TAX - Solihull Metropolitan Borough Council - E
BROADBAND - Upload Max 1000Mbps
Download Max 1000Mbps
MOBILE - O2 Vodafone
EPC - 63 - D
PARKING - Tandem Length Double Garage & Communal Parking
FLOODRISK - Very Low
SERVICES - Mains
COVENANTS - N/A

Are you an investor
interested in expanding your
portfolio?

**Call 0121 775 0101 to provide your
investment criteria for alerts.**

RIVERSIDE DRIVE

Solihull, B91

This first floor apartment, while requiring some updating, offers a fantastic canvas for personalisation and is ideally suited for professionals or downsizers looking for a comfortable and spacious living environment in a sought-after location. The home is part of a popular development that boasts convenient lift access, making it easily accessible for all and has lovely views towards Brueton Park.

FEATURES

- First Floor Apartment with Lift Access
- Requiring Updating
- Spacious Lounge/Dining Room with Balcony
- Fitted Kitchen
- Principal Bedroom with Fitted Wardrobes and Balcony Access
- Two Further Good Sized Bedrooms Both with Fitted Wardrobes
- Shower Room
- Well Maintained Communal Grounds
- Tandem Length Double Garage & Unallocated Parking
- Close to Solihull Town Centre



SCAN TO **VIEW OUR
WEEKLY FILMS &
SUBSCRIBE**



Sneak Peeks

Every week, we unveil "Sneak Peeks," a feature showcasing exclusive properties before they hit Rightmove and other platforms.



The Landlord Club

Join our Landlord Club for weekly updates on legislation, market trends, and our Letting Director's 'Investment Pick of the Week' for optimal ROI.



HTSPMD

Tune into 'How's The Solihull Property Market Dom' weekly for a quick, insightful snapshot of the market.

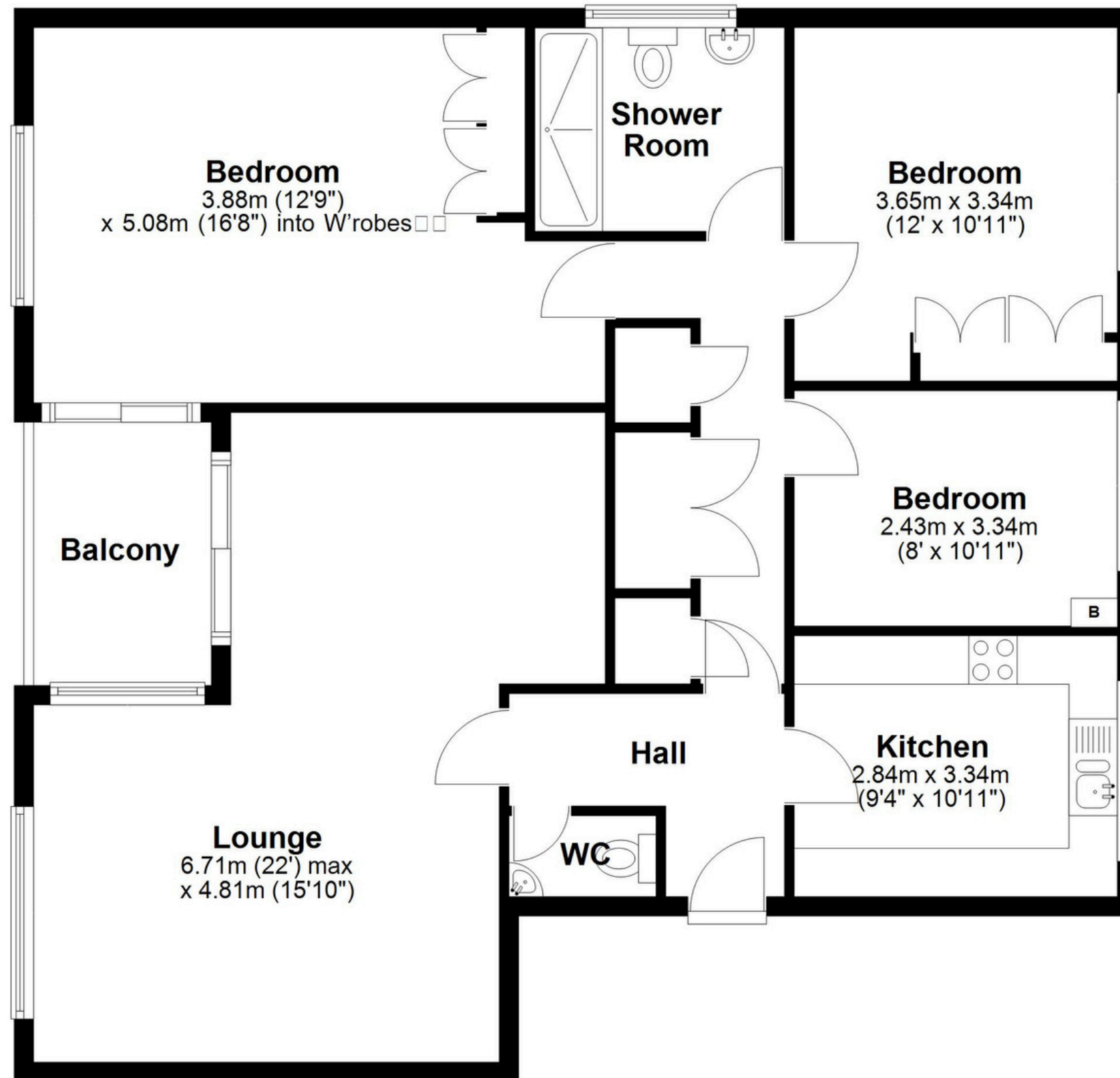


The Mortgage Update

Get weekly insights and the best deals with our Mortgage Update, your shortcut to navigating the complex mortgage landscape confidently.

Floor Plan

Approx. 102.3 sq. metres (1101.1 sq. feet)



Total area: approx. 102.3 sq. metres (1101.1 sq. feet)

This floor plan is for illustration purposes only, this is not intended to be a measured/scaled survey or comply with RICS guidelines. All measurements (including total floor area) openings, orientation and floor area are approximate. No details are guaranteed, they cannot be relied upon for any purpose and do not form part of any agreement. A party must rely upon its own inspection(s). No responsibility is taken for any error, omission, or mis-statement.

Plan produced using PlanUp.