

Need a Mortgage in principle
to make offers? Call us now
for quick assistance!
0121 775 0101



Do you need to sell?
Start your journey now!
Call us we can help.
01564 777 314



SCAN FOR MORE INFO
SIZE - 2385 Sq Ft
TENURE - Freehold
COUNCIL TAX - Solihull Metropolitan Borough Council F
BROADBAND - Upload Superfast 20Mbps
Download Superfast 80Mbps
MOBILE - EE O2
EPC - TBC
PARKING - Ample Driveway Parking & Single Garage
FLOODRISK - Very Low
SERVICES - Mains
COVENANTS - N/A

Are you an investor
interested in expanding your
portfolio?

**Call 01564 777 314 to provide your
investment criteria for alerts.**

MERIDEN ROAD

Hampton in Arden, B92

This spacious and beautifully presented four bedroom detached house offers over 2,300 sq ft of living space and is perfectly positioned in the heart of Hampton-In-Arden, while still enjoying a private setting set well back from the road. With no upward chain and planning permission already in place for a front extension, this home is ideal for families looking for space, flexibility and countryside charm. This is a rare opportunity to secure a spacious, well-located home in one of the area's most sought-after villages.

FEATURES

- Spacious Detached Family Home
- No Upward Chain & Planning Permission in Place for Front Extension
- Stunning Open Plan Kitchen/Family Room
- Separate Utility Room
- Lounge
- Games Room
- Principal Bedroom with En-Suite & Juliet Balcony
- Three Further Bedrooms
- Family Bathroom
- Ample Driveway Parking & Single Garage
- Countryside Views to Rear



SCAN TO VIEW OUR
WEEKLY FILMS &
SUBSCRIBE



Sneak Peeks

Every week, we unveil "Sneak Peeks," a feature showcasing exclusive properties before they hit Rightmove and other platforms.



The Landlord Club

Join our Landlord Club for weekly updates on legislation, market trends, and our Letting Director's 'Investment Pick of the Week' for optimal ROI.



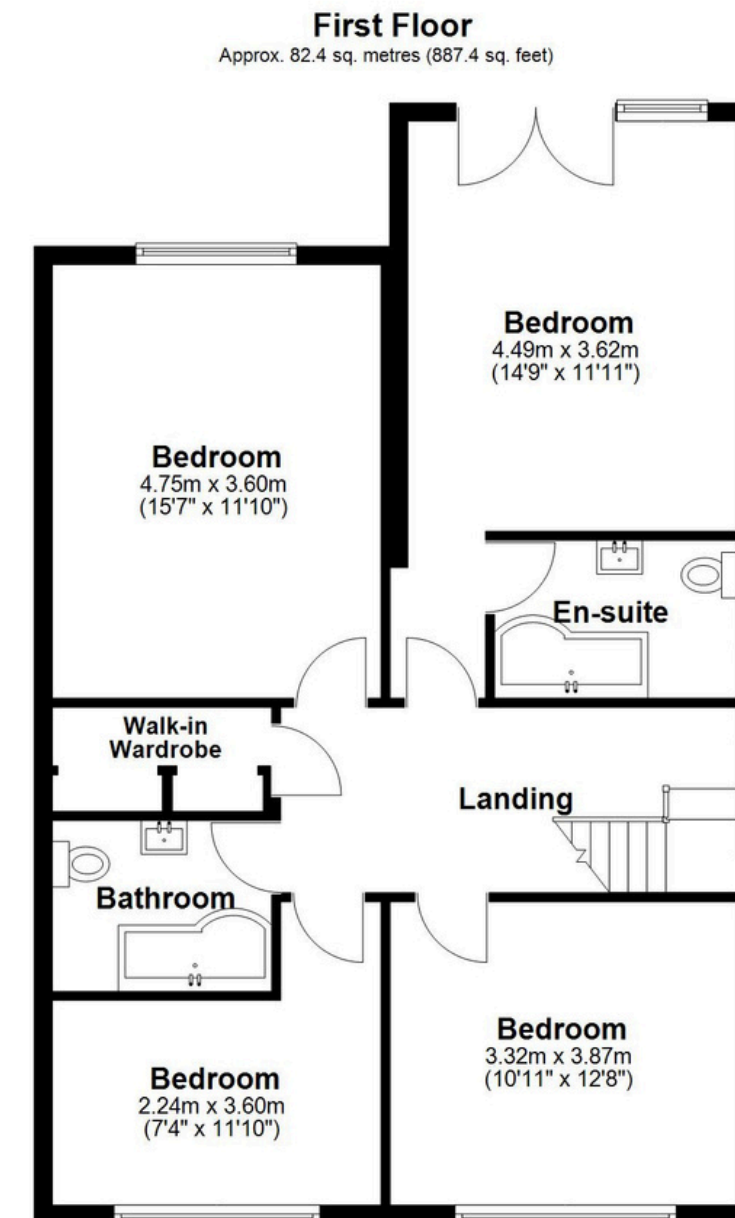
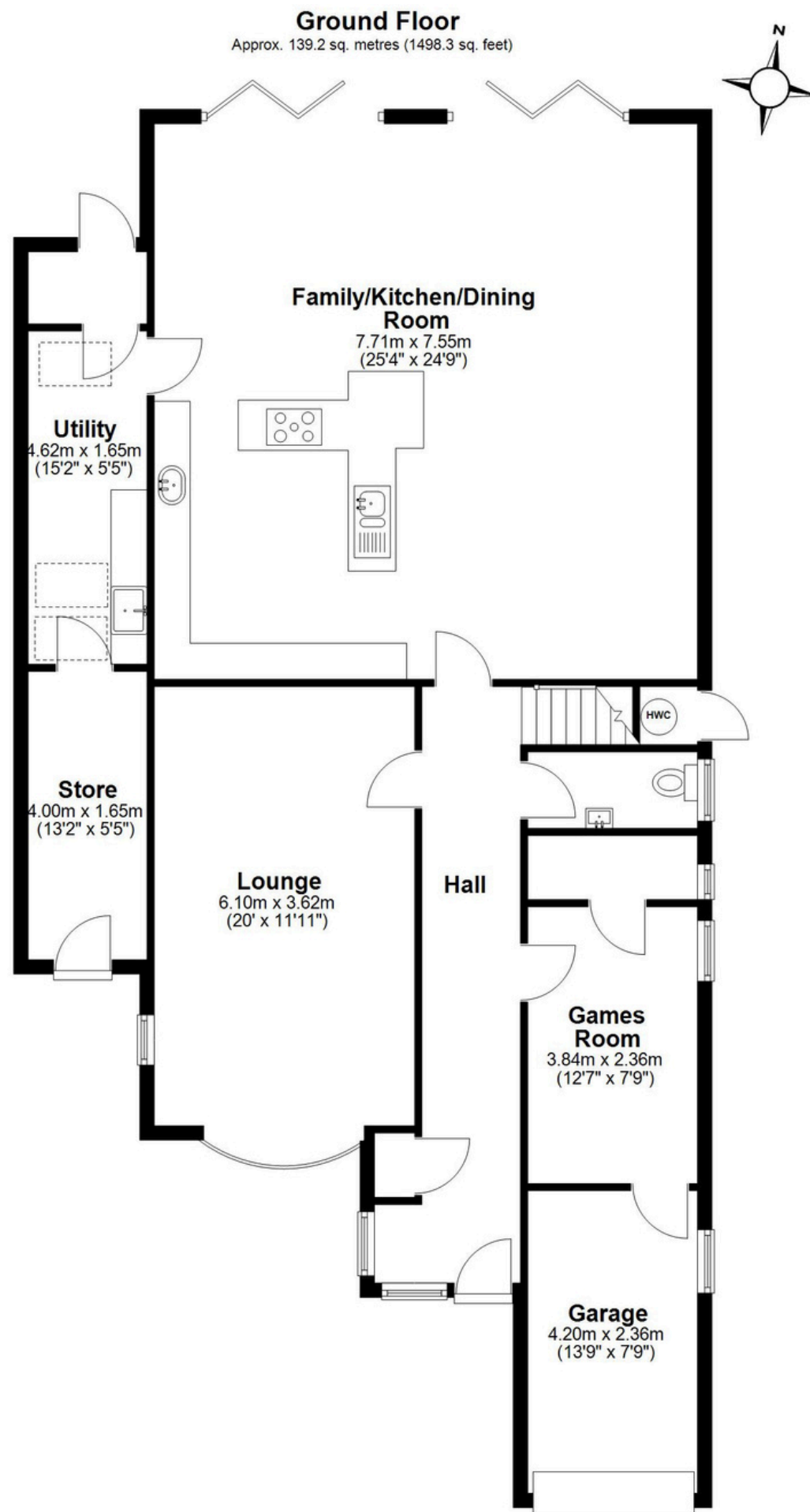
HTSPMD

Tune into 'How's The Solihull Property Market Dom' weekly for a quick, insightful snapshot of the market.



The Mortgage Update

Get weekly insights and the best deals with our Mortgage Update, your shortcut to navigating the complex mortgage landscape confidently.



Total area: approx. 221.6 sq. metres (2385.7 sq. feet)

This floor plan is for illustration purposes only, this is not intended to be a measured/scaled survey or comply with RICS guidelines. All measurements (including total floor area) openings, orientation and floor area are approximate. No details are guaranteed, they cannot be relied upon for any purpose and do not form part of any agreement. A party must rely upon its own inspection(s). No responsibility is taken for any error, omission, or mis-statement.
Plan produced using PlanUp.