

Need a Mortgage in principle
to make offers? Call us now
for quick assistance!
0121 775 0101



Do you need to sell?
Start your journey now!
Call us we can help.
0121 775 0101



SCAN FOR MORE INFO
SIZE - 1932 Sq Ft
TENURE - Freehold
COUNCIL TAX - Solihull Metropolitan Borough Council - F
BROADBAND - Upload Max 1000Mbps
Download Max 1800Mbps
MOBILE - O2
EPC - 67 - D
PARKING - For at least 4 Cars
FLOODRISK - Very Low
SERVICES - Mains
COVENANTS - N/A

Are you an investor
interested in expanding your
portfolio?

**Call 0121 775 0101 to provide your
investment criteria for alerts.**

BURYFIELD ROAD

Solihull, B91

Situated on a peaceful and sought-after road in Solihull, this impressive four bedroom detached family residence seamlessly combines serene living with everyday convenience. Just a short distance from local amenities, this beautifully maintained home is thoughtfully designed for modern family life.

FEATURES

- Impressive Detached Family Home
- Spacious Accommodation
- Stunning Modern Breakfast Kitchen with Separate Utility Room
- Lounge with Feature Fireplace
- Dining Room with Bay Window
- Principle Bedroom with En suite and Walk in Wardrobe
- Two Further Double Bedrooms
- Fourth Single/Home Office
- Contemporary Four Piece Family Bathroom
- Fabulous Secluded Rear Garden Overlooking Golf Course
- Ample Driveway Parking & Single Garage



Sneak Peeks

Every week, we unveil "Sneak Peeks," a feature showcasing exclusive properties before they hit Rightmove and other platforms.

The Landlord Club

Join our Landlord Club for weekly updates on legislation, market trends, and our Letting Director's 'Investment Pick of the Week' for optimal ROI.

HTSPMD

Tune into 'How's The Solihull Property Market Dom' weekly for a quick, insightful snapshot of the market.

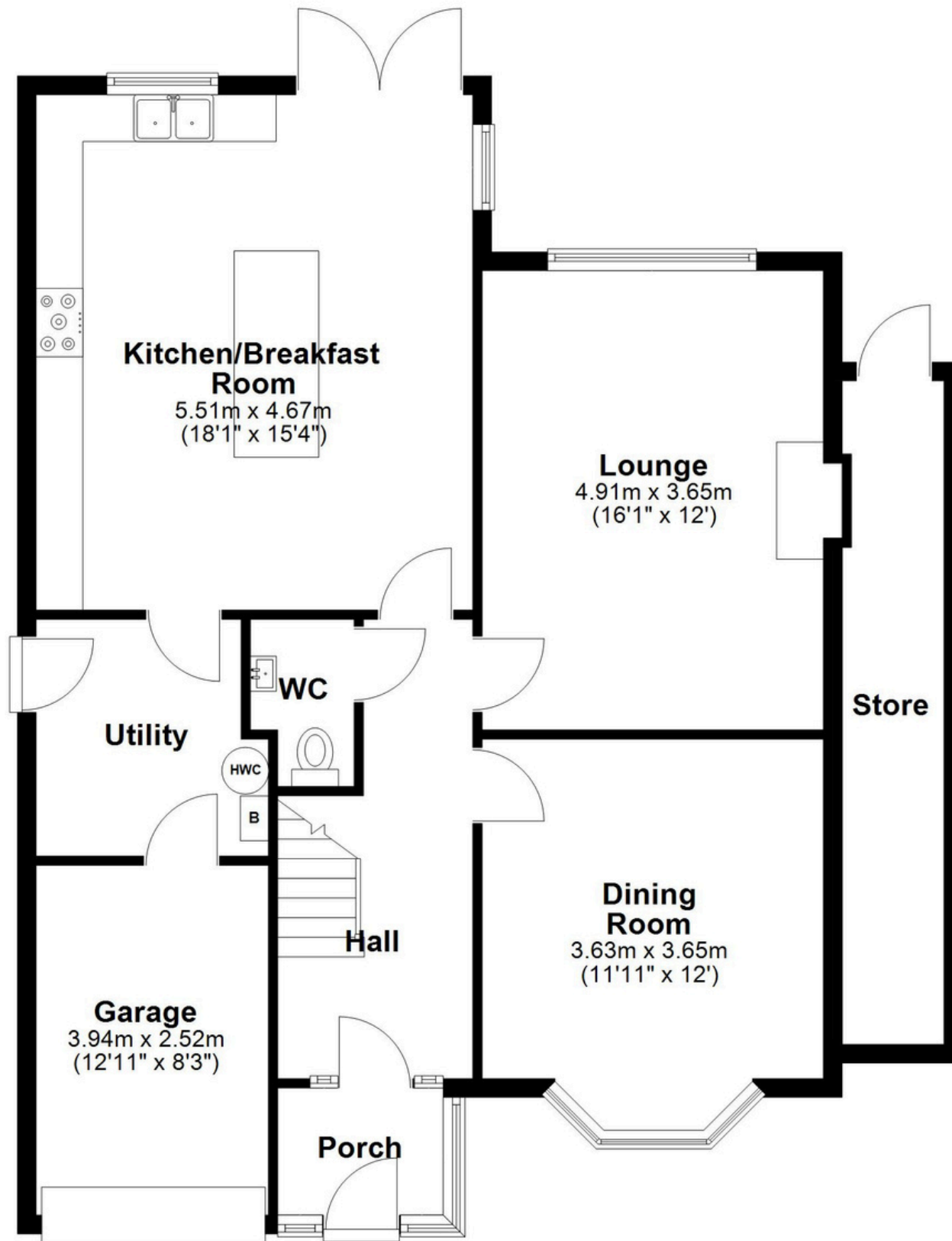
The Mortgage Update

Get weekly insights and the best deals with our Mortgage Update, your shortcut to navigating the complex mortgage landscape confidently.

SCAN TO VIEW OUR
WEEKLY FILMS &
SUBSCRIBE

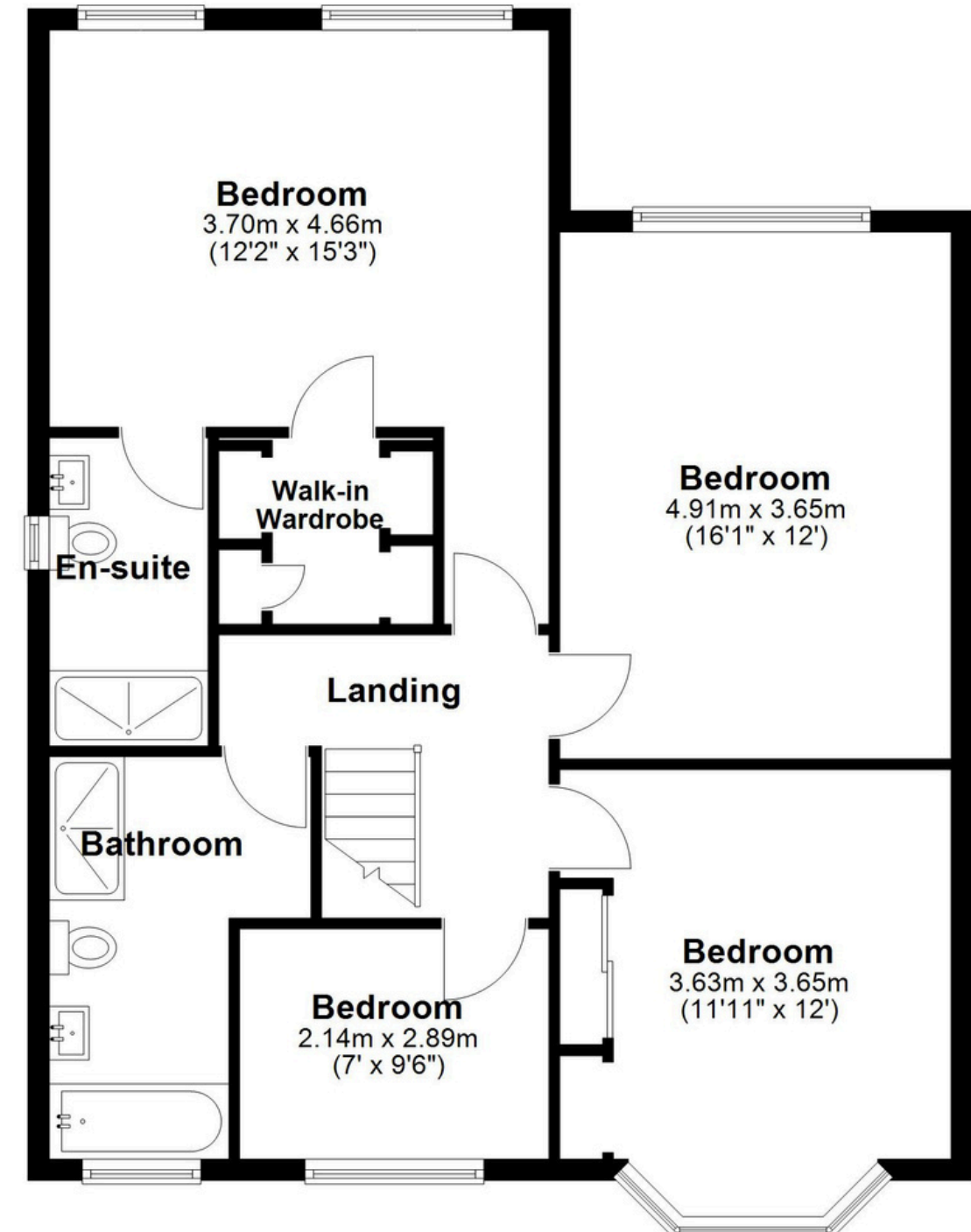
Ground Floor

Approx. 98.0 sq. metres (1054.5 sq. feet)



First Floor

Approx. 81.6 sq. metres (878.1 sq. feet)



Total area: approx. 179.5 sq. metres (1932.5 sq. feet)

This floor plan is for illustration purposes only, this is not intended to be a measured/scaled survey or comply with RICS guidelines. All measurements (including total floor area) openings, orientation and floor area are approximate. No details are guaranteed, they cannot be relied upon for any purpose and do not form part of any agreement. A party must rely upon its own inspection(s). No responsibility is taken for any error, omission, or mis-statement.
Plan produced using PlanUp.