

Need a Mortgage in principle
to make offers? Call us now
for quick assistance!
0121 775 0101



Do you need to sell?
Start your journey now!
Call us we can help.
0121 775 0101



SCAN FOR MORE INFO
SIZE - 875 Sq Ft
TENURE - Freehold
COUNCIL TAX - Birmingham City Council - C
BROADBAND - Upload Max 220Mbps
Download Max 1800Mbps
EPC - D - 63
FLOODRISK - Very Low
SERVICES - Mains
COVENANTS - N/A

73 Woodford Green Road

Hall Green, B28 8PH
Offers in the Region of £290,000

A semi-detached house presenting an excellent opportunity for families seeking a comfortable and inviting home. Spanning approximately 875 square feet, the property boasts a traditional design with the potential for extension to the rear, subject to planning permission, allowing you to tailor the space to your needs.

FEATURES

- Traditional Semi-Detached Property
- Lounge with Bay Window to Front
- Rear Dining Room with Bi-Fold Doors to Garden
- Kitchen
- Two Double Bedrooms
- Third Single Bedroom/Nursery/Home Office
- Family Bathroom with Separate WC
- Private Rear Garden
- Potential to Extend to Rear (STPP)
- Conveniently Located for Local Amenities

Are you an investor
interested in expanding your
portfolio?

Call **0121 775 0101** to provide your
investment criteria for alerts.



SCAN TO **VIEW OUR**
WEEKLY FILMS &
SUBSCRIBE

Sneak Peeks

Every week, we unveil "Sneak Peeks," a feature showcasing exclusive properties before they hit Rightmove and other platforms.

The Landlord Club

Join our Landlord Club for weekly updates on legislation, market trends, and our Letting Director's 'Investment Pick of the Week' for optimal ROI.

HTSPMD

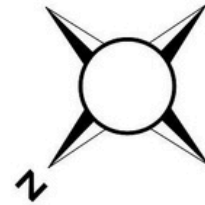
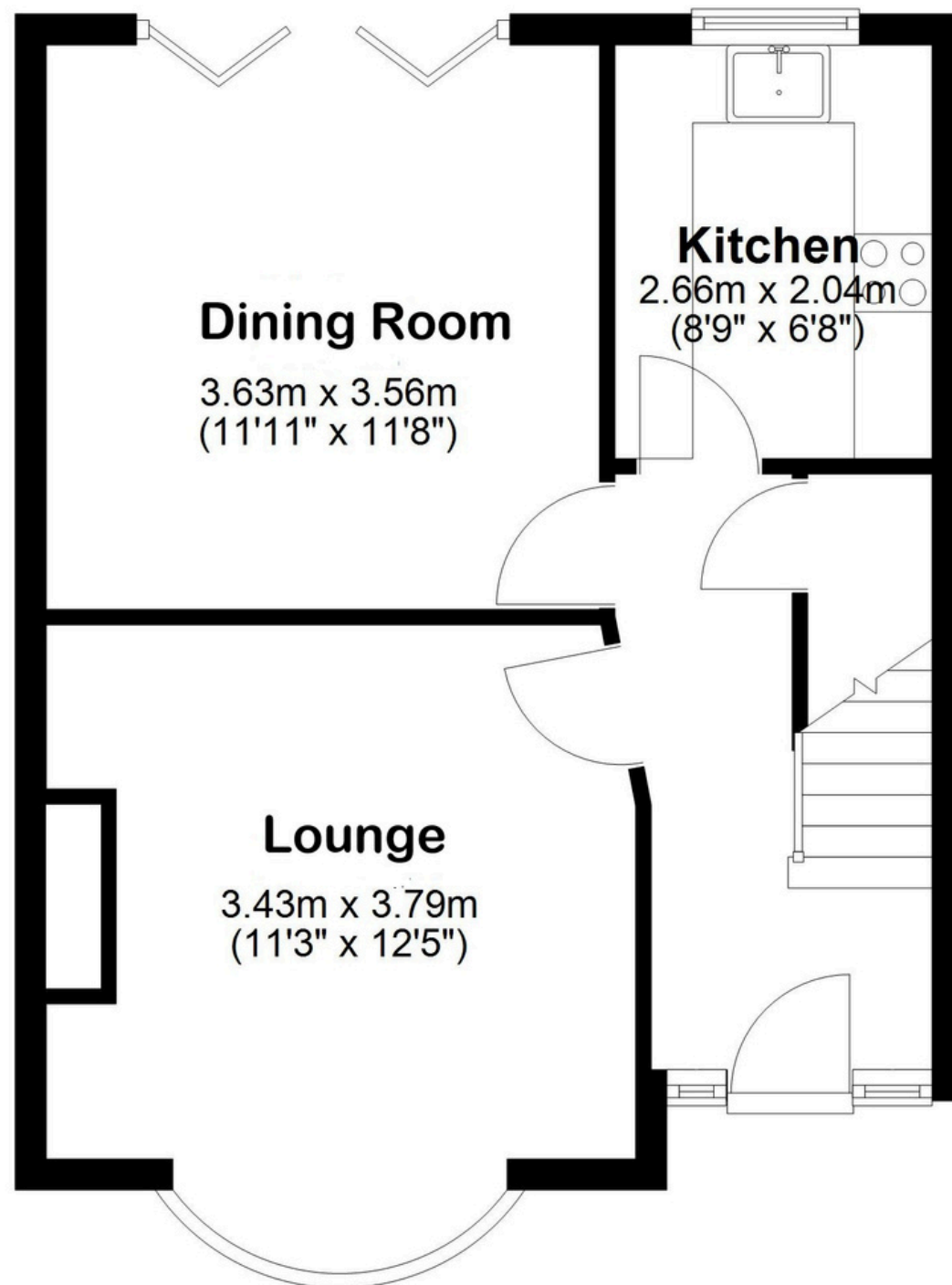
Tune into 'How's The Solihull Property Market Dom' weekly for a quick, insightful snapshot of the market.

The Mortgage Update

Get weekly insights and the best deals with our Mortgage Update, your shortcut to navigating the complex mortgage landscape confidently.

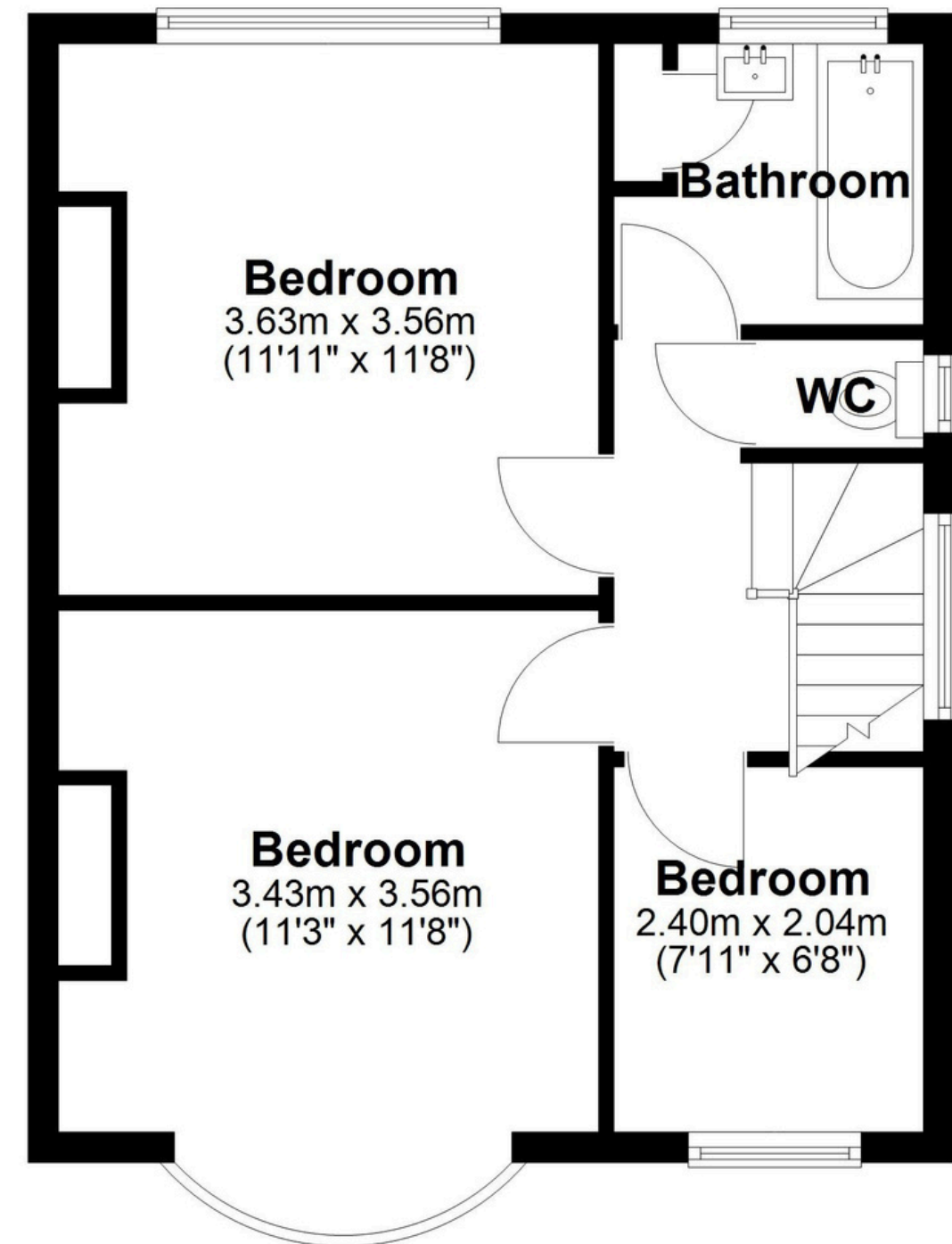
Ground Floor

Approx. 40.1 sq. metres (432.0 sq. feet)



First Floor

Approx. 41.2 sq. metres (443.5 sq. feet)



Total area: approx. 81.3 sq. metres (875.4 sq. feet)

This floor plan is for illustration purposes only, this is not intended to be a measured/scaled survey or comply with RICS guidelines. All measurements (including total floor area) openings, orientation and floor area are approximate. No details are guaranteed, they cannot be relied upon for any purpose and do not form part of any agreement. A party must rely upon its own inspection(s). No responsibility is taken for any error, omission, or mis-statement.

Plan produced using PlanUp.