

Need a Mortgage in principle
to make offers? Call us now
for quick assistance!
0121 775 0101



Do you need to sell?
Start your journey now!
Call us we can help.
0121 775 0101



SCAN FOR MORE INFO
SIZE - 811 Sq Ft
TENURE - Leasehold
SERVICE CHARGE - £2.100
COUNCIL TAX - Solihull Metropolitan Borough Council - E
MOBILE - O2 Vodafone
EPC - B - 82
PARKING - 1 Secure Parking Space
FLOODRISK - Very Low
SERVICES - Mains
COVENANTS - N/A

IMPERIAL HOUSE

Solihull, B91

Situated in the vibrant heart of Solihull, this immaculately presented penthouse apartment offers a perfect blend of modern living and convenience. Built in 2023, this stylish residence is offered with no upward chain, making it an ideal choice for those seeking a seamless transition into their new home.

FEATURES

- Stunning Penthouse Apartment
- High Specification Throughout
- Open Plan Living Accommodation with Juliet Balcony
- Contemporary Fitted Kitchen with Appliances
- Principal Double Bedroom with En-Suite Shower Room
- Double Bedroom Two
- Luxury Bathroom
- Roof Top Terrace
- Secure Parking Space
- Walking Distance to Solihull Town Centre and Train Station
- Offered with No Upward Chain

Are you an investor
interested in expanding your
portfolio?

**Call 0121 775 0101 to provide your
investment criteria for alerts.**



SCAN TO **VIEW OUR
WEEKLY FILMS &
SUBSCRIBE**

Sneak Peeks

Every week, we unveil "Sneak Peeks," a feature showcasing exclusive properties before they hit Rightmove and other platforms.

The Landlord Club

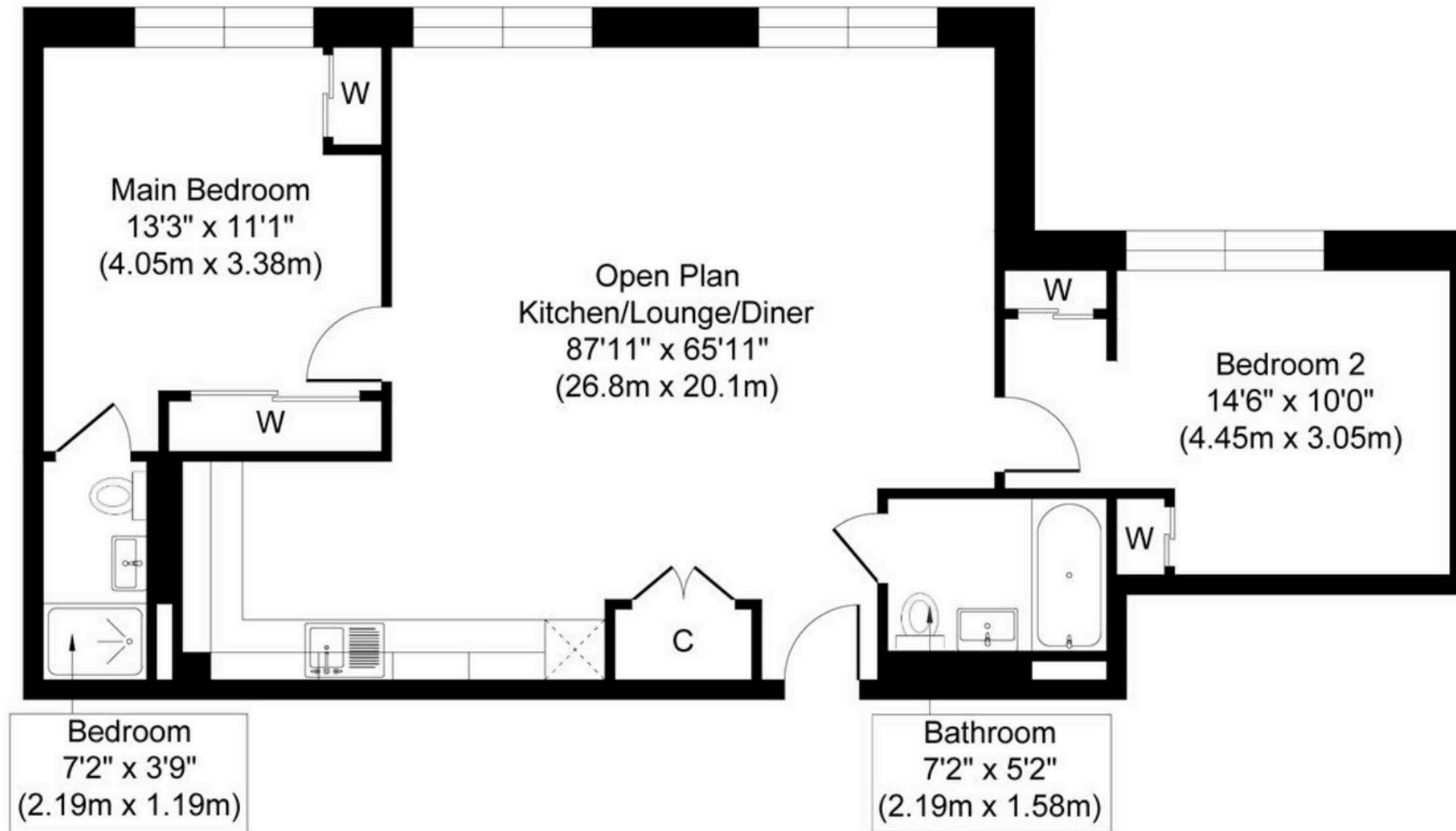
Join our Landlord Club for weekly updates on legislation, market trends, and our Letting Director's 'Investment Pick of the Week' for optimal ROI.

HTSPMD

Tune into 'How's The Solihull Property Market Dom' weekly for a quick, insightful snapshot of the market.

The Mortgage Update

Get weekly insights and the best deals with our Mortgage Update, your shortcut to navigating the complex mortgage landscape confidently.



Approximate Floor Area
811 sq. ft
(75.34 sq. m)

Whilst every attempt has been made to ensure the accuracy of the floor plan contained here, measurements of doors, windows, rooms and any other items are approximate and no responsibility is taken for any error, omission, or mis-statement. The measurements should not be relied upon for valuation, transaction and/or funding purposes. This plan is for illustrative purposes only and should be used as such by any prospective purchaser or tenant.

The services, systems and appliances shown have not been tested and no guarantee as to their operability or efficiency can be given.

Copyright V360 Ltd 2025 | www.houseviz.com