

Need a Mortgage in principle
to make offers? Call us now
for quick assistance!
0121 775 0101



Do you need to sell?
Start your journey now!
Call us we can help.
0121 775 0101



SCAN FOR MORE INFO
SIZE - 1277 Sq Ft
TENURE - Freehold
COUNCIL TAX - Solihull Metropolitan Borough Council - D
BROADBAND - Upload Max 1000Mbps
Download Max 1800Mbs
EPC - C - 69
PARKING - For at least 3 Cars
FLOODRISK - Very Low
SERVICES - Mains
COVENANTS - N/A

RAVENS CROFT ROAD
Solihull, B92

Situated in a cul-de-sac this semi-detached house presents an excellent opportunity for families and investors alike and is offered with no upward chain. This property has been a cherished family home for the past 60 years and offers fantastic potential for extension, subject to the necessary planning permissions.

FEATURES

- Offered With No Upward Chain
- Potential to Extend (STPP)
- Dining Room
- Lounge with Patio Doors to Rear
- Kitchen with Utility Room
- T2 Excellent Sized Double Bedrooms
- Third Single/Nursery
- Modern Re-Fitted Shower Room with Separate W.C.
- Rear Garden
- Driveway Parking & Single Garage

Are you an investor
interested in expanding your
portfolio?

**Call 0121 775 0101 to provide your
investment criteria for alerts.**



SCAN TO **VIEW OUR**
WEEKLY FILMS &
SUBSCRIBE

Sneak Peeks

Every week, we unveil "Sneak Peeks," a feature showcasing exclusive properties before they hit Rightmove and other platforms.

The Landlord Club

Join our Landlord Club for weekly updates on legislation, market trends, and our Letting Director's 'Investment Pick of the Week' for optimal ROI.

HTSPMD

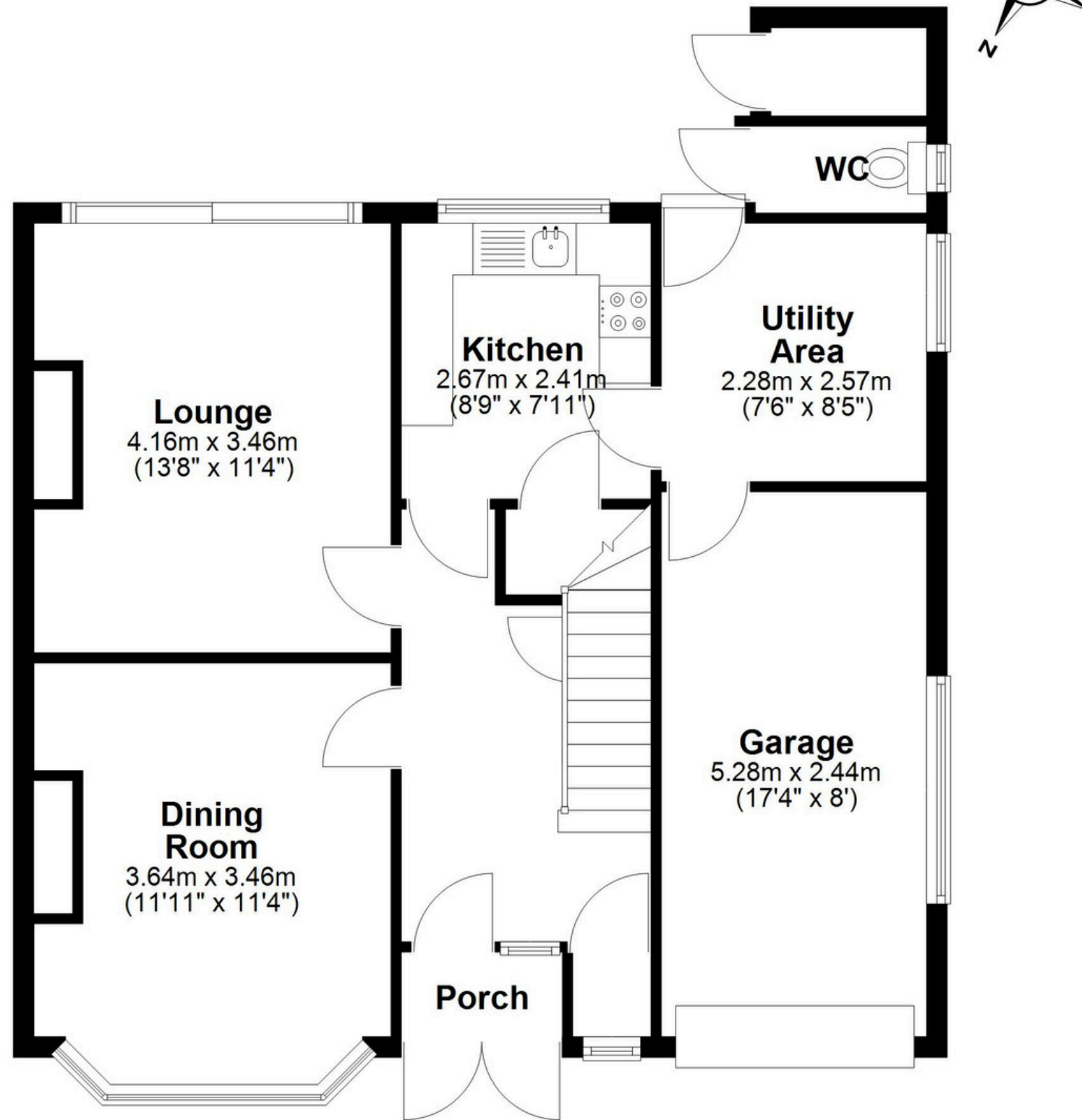
Tune into 'How's The Solihull Property Market Dom' weekly for a quick, insightful snapshot of the market.

The Mortgage Update

Get weekly insights and the best deals with our Mortgage Update, your shortcut to navigating the complex mortgage landscape confidently.

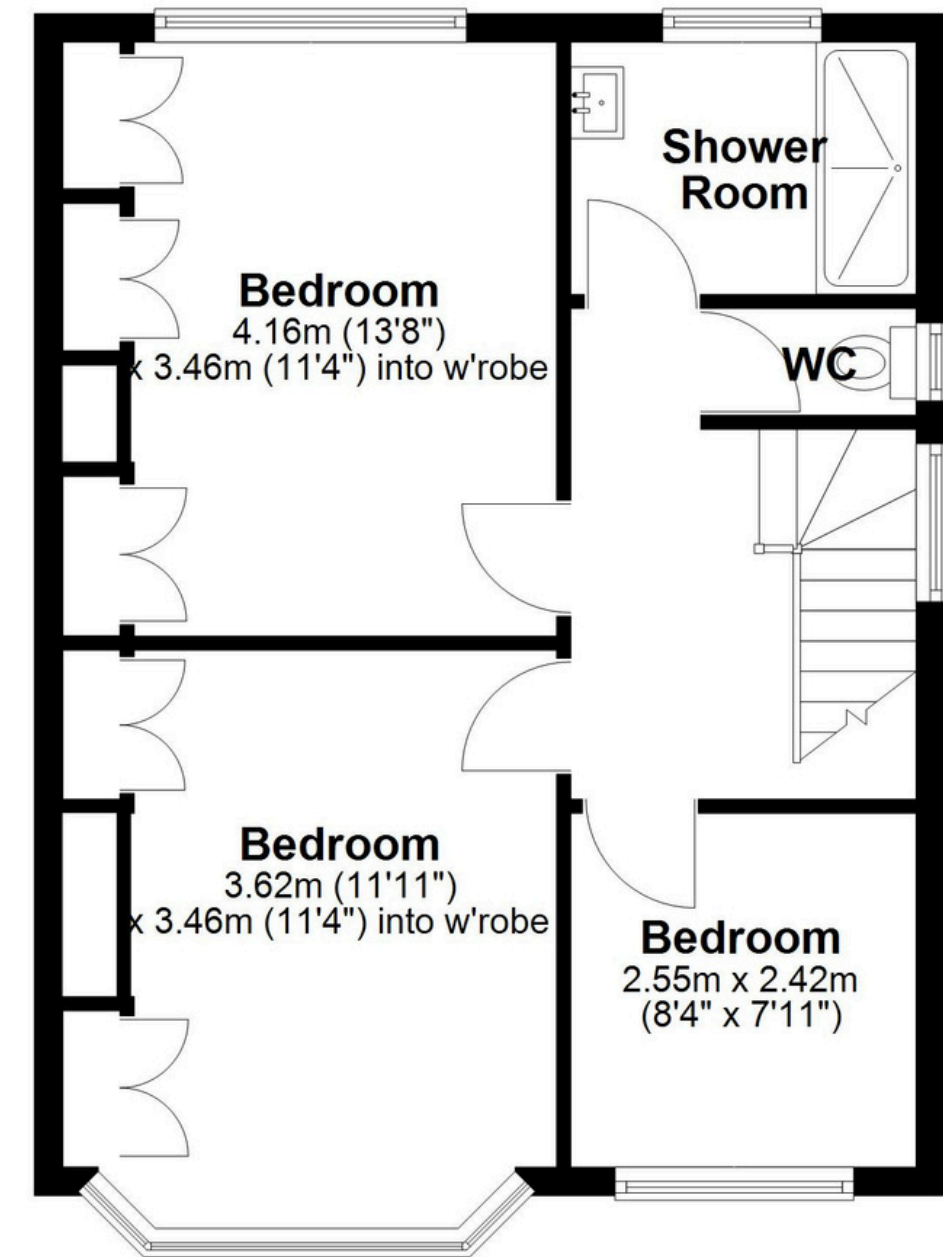
Ground Floor

Approx. 71.1 sq. metres (765.0 sq. feet)



First Floor

Approx. 47.6 sq. metres (512.1 sq. feet)



Total area: approx. 118.6 sq. metres (1277.1 sq. feet)

This floor plan is for illustration purposes only, this is not intended to be a measured/scaled survey or comply with RICS guidelines. All measurements (including total floor area) openings, orientation and floor area are approximate. No details are guaranteed, they cannot be relied upon for any purpose and do not form part of any agreement. A party must rely upon its own inspection(s). No responsibility is taken for any error, omission, or mis-statement.
Plan produced using PlanUp.