

Need a Mortgage in principle  
to make offers? Call us now  
for quick assistance!  
**0121 775 0101**



Do you need to sell?  
Start your journey now!  
Call us we can help.  
**0121 775 0101**



**SCAN FOR MORE INFO**  
**SIZE** - 1633 Sq Ft  
**TENURE** - Freehold  
**COUNCIL TAX** - Solihull Metropolitan Borough Council - D  
**BROADBAND** - Upload Max 1000Mbps  
Download Max 1800 Mbps  
**MOBILE** - Three  
**EPC** - C - 70  
**PARKING** - Driveway  
**FLOODRISK** - Very Low  
**SERVICES** - Mains  
**COVENANTS** - N/A

Are you an investor  
interested in expanding your  
portfolio?

**Call 0121 775 0101 to provide your  
investment criteria for alerts.**

## ROCK ROAD

Solihull, B92

Discover this expansive semi-detached home with a separate self contained annexe and offered with no upward chain. This property is ideal for families seeking spacious accommodation in a convenient location.

### FEATURES

- Extended Semi-Detached Family Home
- Spacious Lounge
- Kitchen/Family Room
- Three Bedrooms
- Family Shower Room
- Versatile Loft Room
- Self Contained Annexe with Kitchen/Bedroom/Shower Room
- Driveway Parking
- Sought After Neighbourhood
- Close to Local Schools
- Please Note: Images are representative only



SCAN TO **VIEW OUR**  
**WEEKLY FILMS &**  
**SUBSCRIBE**

### Sneak Peeks

Every week, we unveil "Sneak Peeks," a feature showcasing exclusive properties before they hit Rightmove and other platforms.

### The Landlord Club

Join our Landlord Club for weekly updates on legislation, market trends, and our Letting Director's 'Investment Pick of the Week' for optimal ROI.

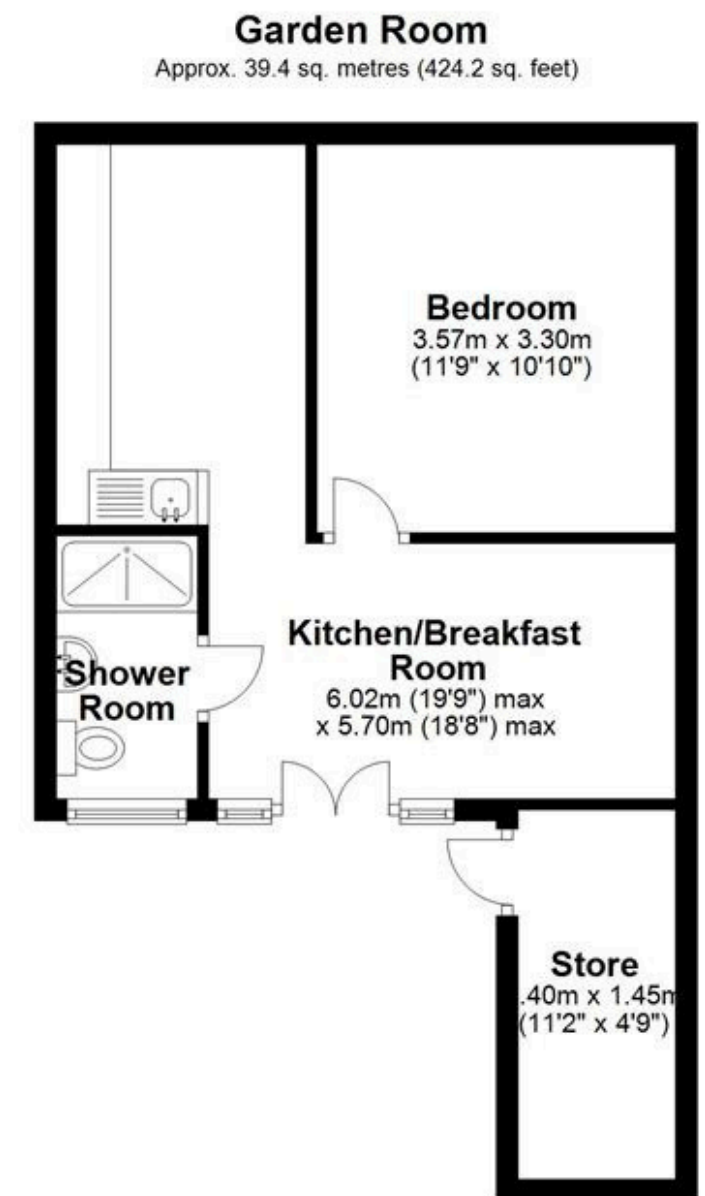
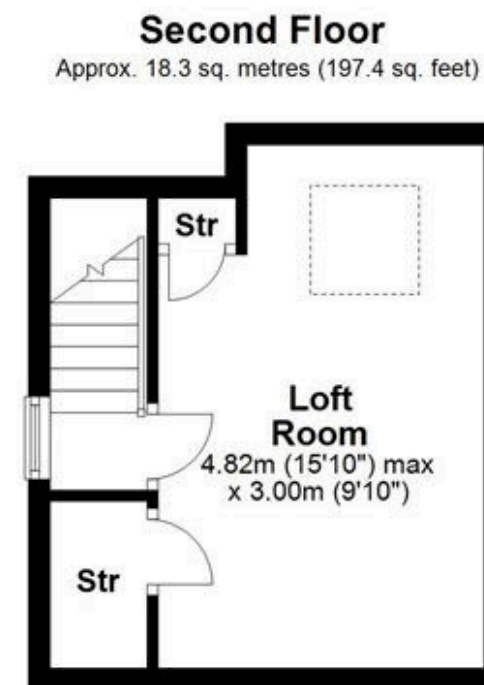
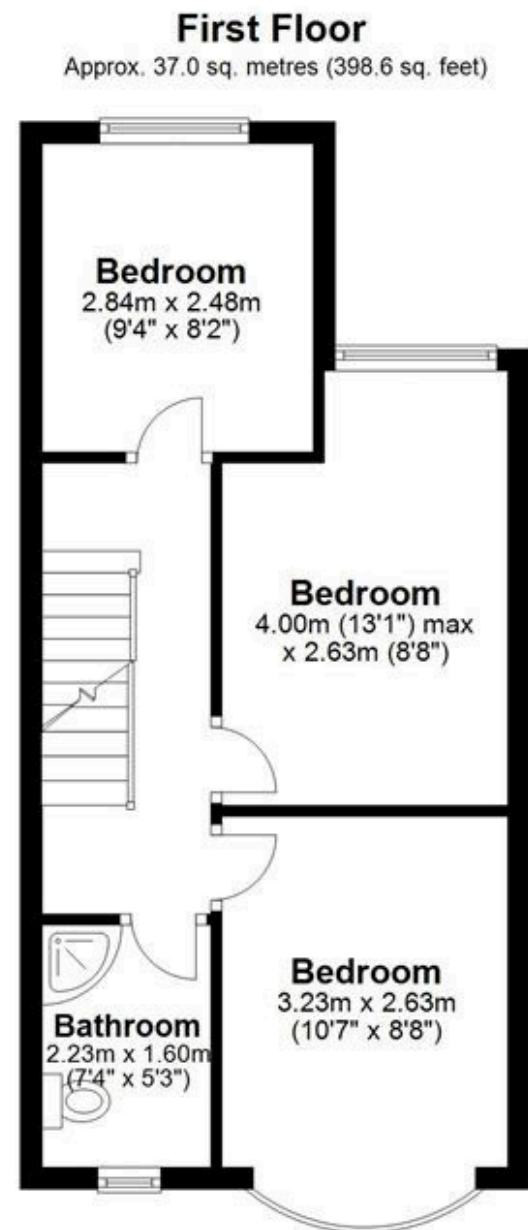
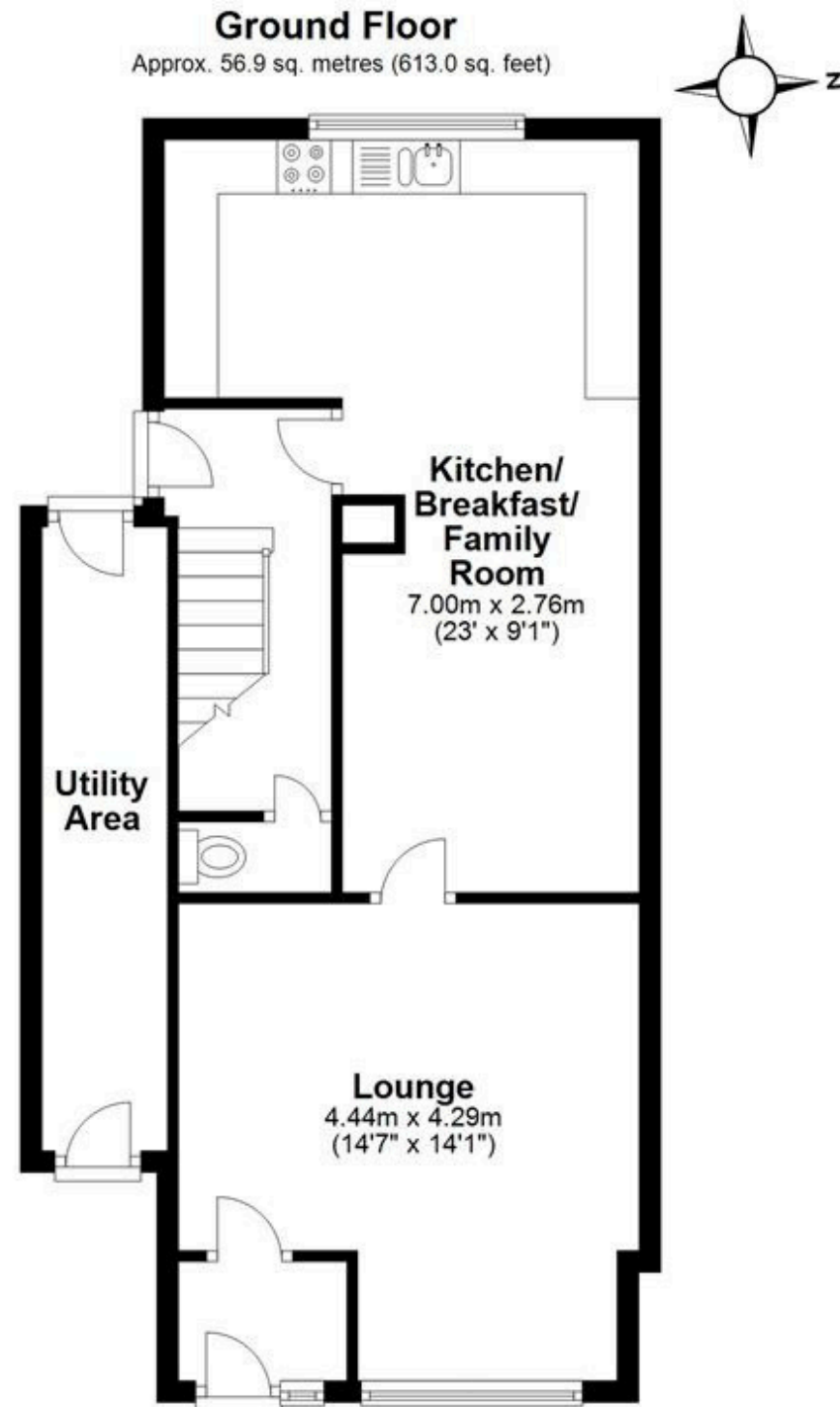
### HTSPMD

Tune into 'How's The Solihull Property Market Dom' weekly for a quick, insightful snapshot of the market.

### The Mortgage Update

Get weekly insights and the best deals with our Mortgage Update, your shortcut to navigating the complex mortgage landscape confidently.





Total area: approx. 151.7 sq. metres (1633.1 sq. feet)

Please note this plan is for illustration purposes only, this is not intended to be a measured survey or comply with RICS guidelines. All measurements are approximate and should be checked by prospective buyers/tenants. No responsibility is taken for any error, omission, or mis-statement.  
Plan produced using PlanUp.