

Need a Mortgage in principle  
to make offers? Call us now  
for quick assistance!  
**0121 775 0101**



Do you need to sell?  
Start your journey now!  
Call us we can help.  
**0121 775 0101**



**SCAN FOR MORE INFO**  
**SIZE** - 791 Sq Ft  
**TENURE** - Freehold  
**COUNCIL TAX** - Solihull Metropolitan Borough Council - C  
**BROADBAND** - Upload Max 1000Mbps  
Download Max 1800Mbps  
**MOBILE** - EE O2 Vodafone  
**EPC** - C - 75  
**PARKING** - For 1 - 2 Cars  
**FLOODRISK** - Very Low  
**SERVICES** - Mains  
**COVENANTS** - N/A

Are you an investor  
interested in expanding your  
portfolio?

**Call 0121 775 0101 to provide your  
investment criteria for alerts.**

## ANCHOR LANE

Solihull, B91

An immaculately presented semi-detached house offering a perfect blend of comfort and convenience. Built in 2003, the property is ready for you to move straight in. This home is not just a property; it is a lifestyle choice, offering both comfort and accessibility in a sought-after location.

### FEATURES

- Beautifully Presented Double Fronted Semi-Detached Property
- Hallway with Guest Cloakroom
- Dual Aspect Lounge with Access to Garden
- Bright Spacious Breakfast Kitchen
- Principal Bedroom with Wardrobes & En-Suite Shower Room
- Two Further Bedrooms
- Contemporary Family Bathroom
- Low Maintenance Rear Garden
- Private Allocated Parking Space for One/Two Cars
- No Upward Chain
- Convenient Location for Solihull Town Centre



SCAN TO **VIEW OUR**  
**WEEKLY FILMS &**  
**SUBSCRIBE**

### Sneak Peeks

Every week, we unveil "Sneak Peeks," a feature showcasing exclusive properties before they hit Rightmove and other platforms.

### The Landlord Club

Join our Landlord Club for weekly updates on legislation, market trends, and our Letting Director's 'Investment Pick of the Week' for optimal ROI.

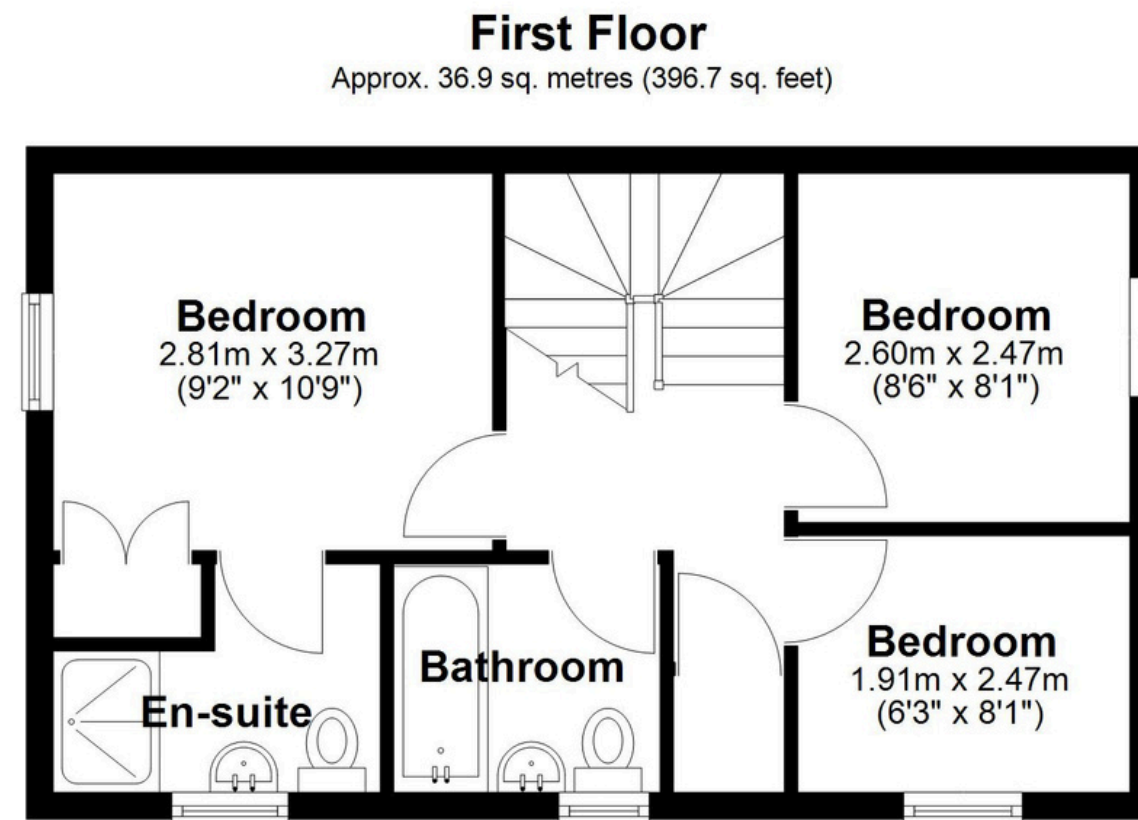
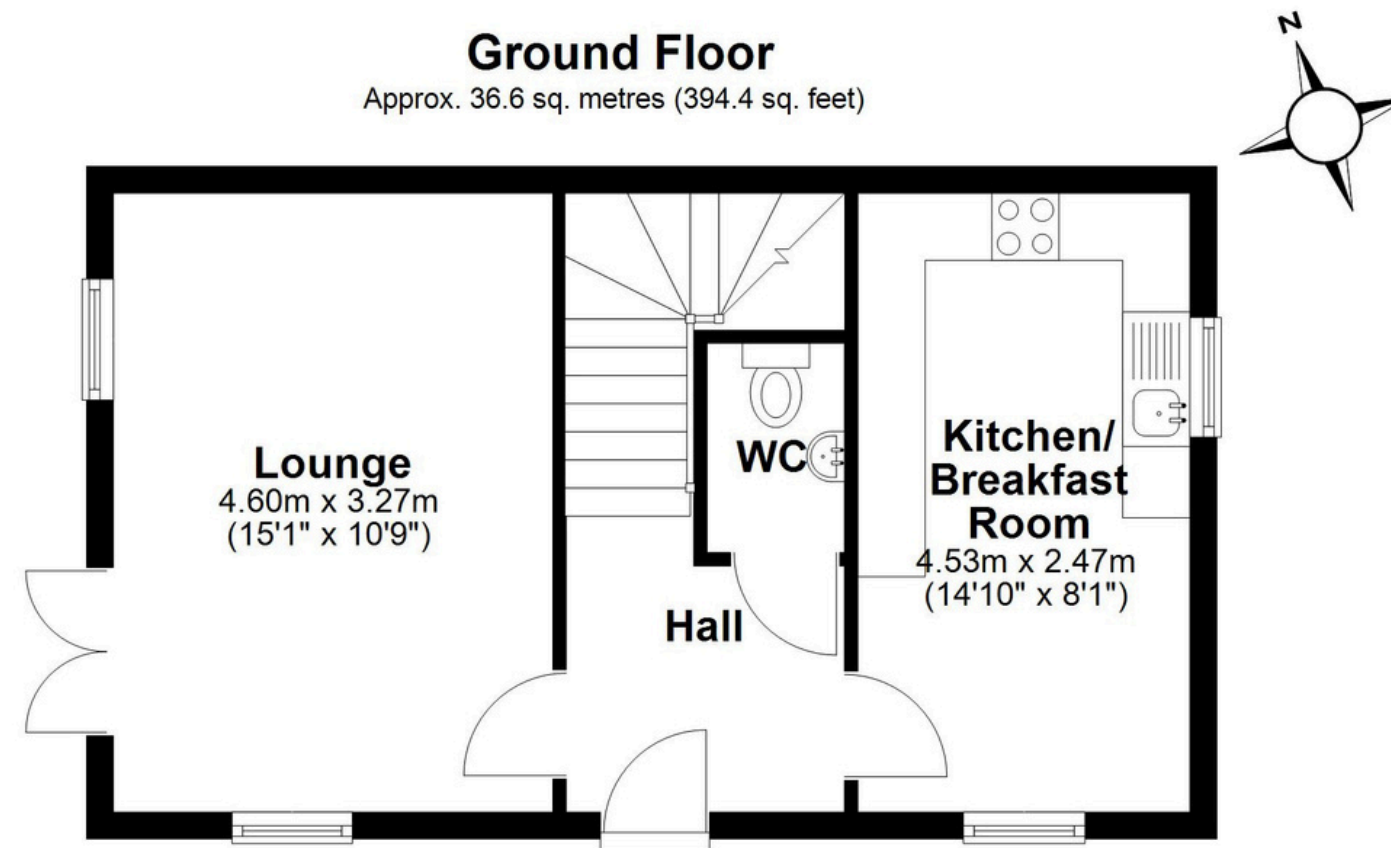
### HTSPMD

Tune into 'How's The Solihull Property Market Dom' weekly for a quick, insightful snapshot of the market.

### The Mortgage Update

Get weekly insights and the best deals with our Mortgage Update, your shortcut to navigating the complex mortgage landscape confidently.





Total area: approx. 73.5 sq. metres (791.1 sq. feet)

This floor plan is for illustration purposes only, this is not intended to be a measured/scaled survey or comply with RICS guidelines. All measurements (including total floor area) openings, orientation and floor area are approximate. No details are guaranteed, they cannot be relied upon for any purpose and do not form part of any agreement. A party must rely upon its own inspection(s). No responsibility is taken for any error, omission, or mis-statement.  
Plan produced using PlanUp.