

Need a Mortgage in principle
to make offers? Call us now
for quick assistance!
0121 775 0101



Do you need to sell?
Start your journey now!
Call us we can help.
01564 777 314



SCAN FOR MORE INFO
SIZE - 543 Sq Ft
TENURE - Freehold
COUNCIL TAX - Stratford District Council - C
BROADBAND - Upload Max 220Mbps Download Max 1800Mbps
MOBILE - TBA
EPC - D - 56
PARKING - 1 Permit Parking Space
FLOODRISK - Very Low
CONSERVATION AREA - Yes, Henley-in-Arden
SERVICES - Mains
COVENANTS - N/A

166 High Street
Henley-in-Arden, B95 5BN
Offers Over £280,000

An immaculately presented two bedroom cottage set in a prime position in the heart of Henley-in-Arden. The property includes a parking permit and features a welcoming living room, a newly fitted kitchen, two bedrooms, and a contemporary bathroom. Outside, a private west-facing courtyard garden offers an attractive, low-maintenance retreat. This charming home is offered with no upward chain.

FEATURES

- Charming Mid Terraced Cottage
- Prime Henley in Arden Location
- Welcoming Lounge/Dining Room
- Newly Re-Fitted Kitchen
- Two Bedrooms
- Modern Bathroom
- West Facing Courtyard Garden
- Permit Parking Space
- No Upward Chain

Are you an investor
interested in expanding your
portfolio?

**Call 01564 777 314 to provide your
investment criteria for alerts.**



SCAN TO **VIEW OUR**
WEEKLY FILMS &
SUBSCRIBE

Sneak Peeks

Every week, we unveil "Sneak Peeks," a feature showcasing exclusive properties before they hit Rightmove and other platforms.

The Landlord Club

Join our Landlord Club for weekly updates on legislation, market trends, and our Letting Director's 'Investment Pick of the Week' for optimal ROI.

HTSPMD

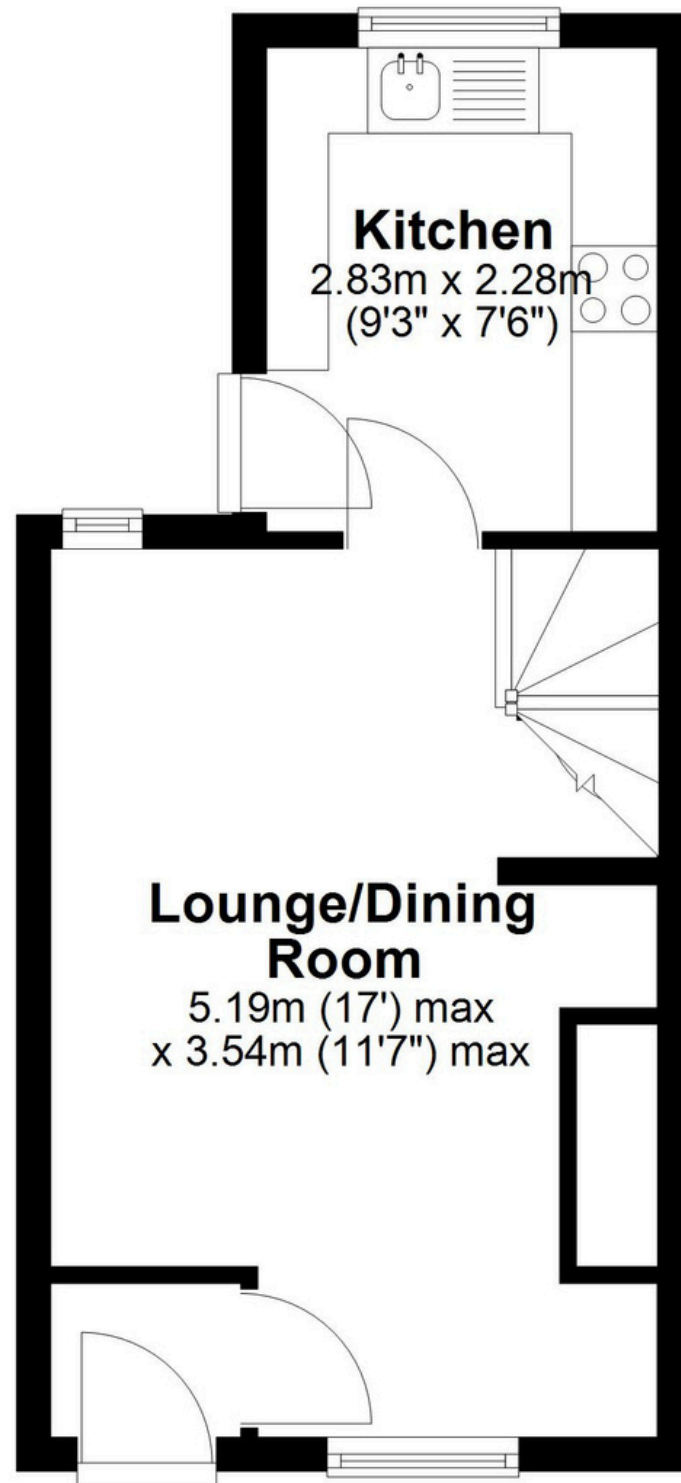
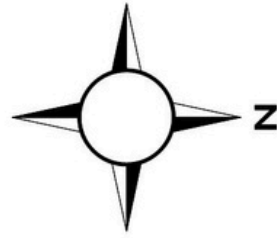
Tune into 'How's The Solihull Property Market Dom' weekly for a quick, insightful snapshot of the market.

The Mortgage Update

Get weekly insights and the best deals with our Mortgage Update, your shortcut to navigating the complex mortgage landscape confidently.

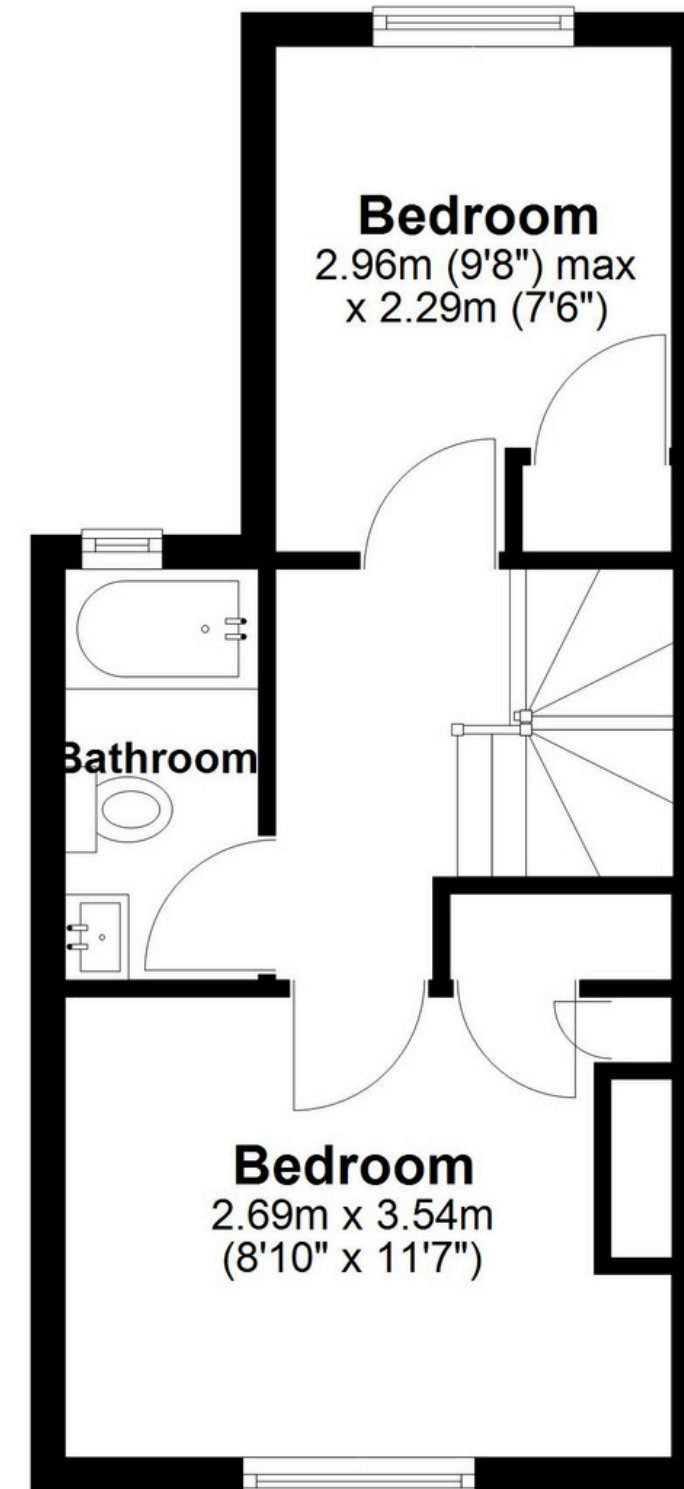
Ground Floor

Approx. 25.1 sq. metres (269.8 sq. feet)



First Floor

Approx. 25.5 sq. metres (274.0 sq. feet)



Total area: approx. 50.5 sq. metres (543.8 sq. feet)

This floor plan is for illustration purposes only, this is not intended to be a measured/scaled survey or comply with RICS guidelines. All measurements (including total floor area) openings, orientation and floor area are approximate. No details are guaranteed, they cannot be relied upon for any purpose and do not form part of any agreement. A party must rely upon its own inspection(s). No responsibility is taken for any error, omission, or mis-statement.

Plan produced using PlanUp.