

Need a Mortgage in principle
to make offers? Call us now
for quick assistance!
0121 775 0101



Do you need to sell?
Start your journey now!
Call us we can help.
01564 777 314



SCAN FOR MORE INFO
SIZE - 1684 Sq Ft
TENURE - Freehold
COUNCIL TAX - Solihull Metropolitan Borough Council - F
BROADBAND - Upload Max 1000Mbps
Download Max 1000Mbps
MOBILE - EE O2 Vodafone
EPC - 59 - D
PARKING - Driveway & Garage
FLOODRISK - Very Low
SERVICES - Mains
COVENANTS - There are covenants at the property, check title register/deeds for clarification

Are you an investor
interested in expanding your
portfolio?

**Call 01564 777 314 to provide your
investment criteria for alerts.**

WYKEN CLOSE

Dorridge, B93

Situated in the sought-after village of Dorridge, this detached house presents an exceptional opportunity for families seeking a spacious and adaptable home. It is offered with no upward chain, making it an ideal choice for those looking to create their forever home.

FEATURES

- Spacious Detached Family Home
- No Upward Chain
- Desirable Dorridge Location
- Bright Lounge & Separate Dining Room
- Large Kitchen with Adjoining Utility
- Four Double Bedrooms
- En-Suite & Family Bathroom
- Private South Facing Garden
- Ample Driveway Parking, Carport & Single Garage
- Create Possibilities for Your Own Design Ideas Including Extension (STPP)



SCAN TO **VIEW OUR
WEEKLY FILMS &
SUBSCRIBE**

Sneak Peeks

Every week, we unveil "Sneak Peeks," a feature showcasing exclusive properties before they hit Rightmove and other platforms.

The Landlord Club

Join our Landlord Club for weekly updates on legislation, market trends, and our Letting Director's 'Investment Pick of the Week' for optimal ROI.

HTSPMD

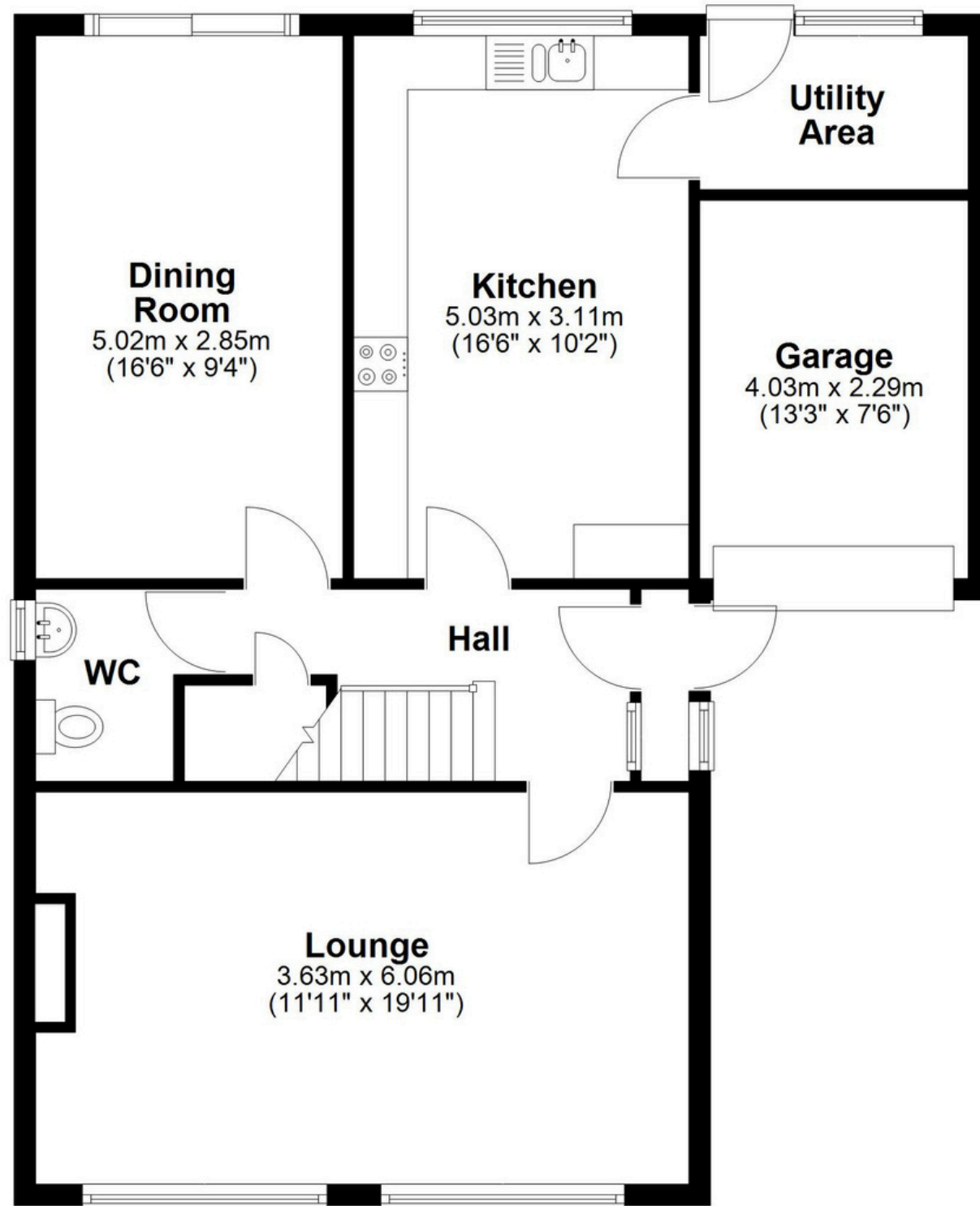
Tune into 'How's The Solihull Property Market Dom' weekly for a quick, insightful snapshot of the market.

The Mortgage Update

Get weekly insights and the best deals with our Mortgage Update, your shortcut to navigating the complex mortgage landscape confidently.

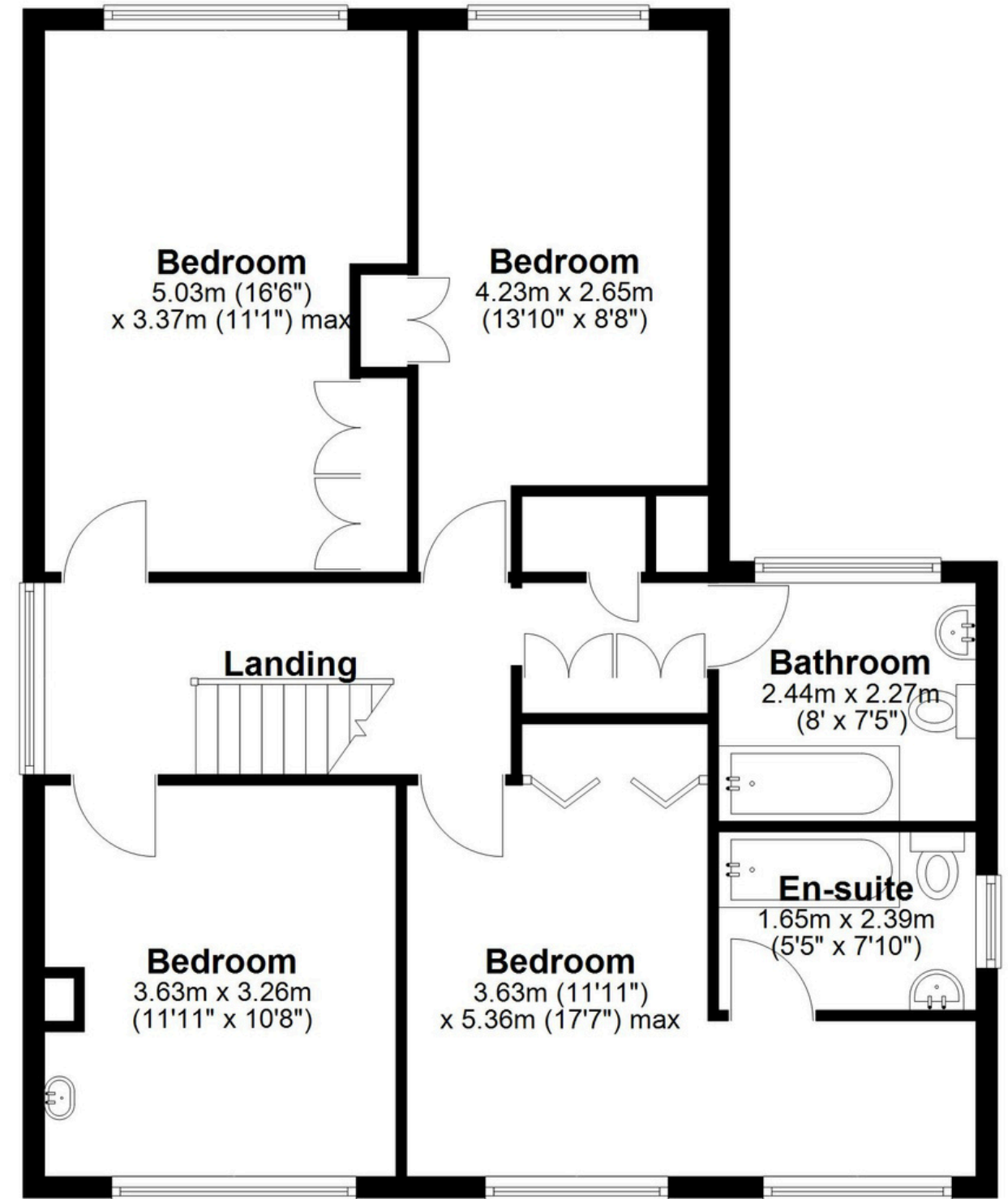
Ground Floor

Approx. 77.5 sq. metres (834.1 sq. feet)



First Floor

Approx. 79.0 sq. metres (850.4 sq. feet)



Total area: approx. 156.5 sq. metres (1684.5 sq. feet)

This floor plan is for illustration purposes only, this is not intended to be a measured/scaled survey or comply with RICS guidelines. All measurements (including total floor area) openings, orientation and floor area are approximate. No details are guaranteed, they cannot be relied upon for any purpose and do not form part of any agreement. A party must rely upon its own inspection(s). No responsibility is taken for any error, omission, or mis-statement.

Plan produced using PlanUp.