

Need a Mortgage in principle
to make offers? Call us now
for quick assistance!
0121 775 0101



Do you need to sell?
Start your journey now!
Call us we can help.
01564 777 314



SCAN FOR MORE INFO
SIZE - 844 Sq Ft
TENURE - Leasehold with 100 years remaining
SERVICE CHARGE - £2,839 per annum
GROUND RENT - £250 per annum
COUNCIL TAX - Solihull Metropolitan Borough Council - E
BROADBAND - Upload Max 1000Mbps
Download Max 1000Mbps
MOBILE - EE Three
EPC - C - 78
PARKING - For 2 Cars
FLOODRISK - Very Low
SERVICES - Mains
COVENANTS - N/A

Are you an investor
interested in expanding your
portfolio?

**Call 01564 777 314 to provide your
investment criteria for alerts.**

STATION ROAD

Dorridge, B93

This well presented, two double bedroom apartment is desirably located in the heart of Dorridge village and is a few minutes walk from the train station. Situated on the first floor, Chadwick House is an exclusive gated development built by Chase Homes in 2007 and offers secure underground parking, lift access and is offered with no upward chain.

FEATURES

- First Floor Apartment
- Tastefully Presented Throughout
- Spacious Lounge/Dining Room
- Fitted Kitchen
- Principal Bedroom with En-Suite & Wardrobes
- Second Double Bedroom
- Bathroom
- Underground Parking for One Vehicle
- Well Maintained Communal Grounds
- Conveniently Located for Local Amenities & Dorridge Train Station



SCAN TO **VIEW OUR**
WEEKLY FILMS &
SUBSCRIBE

Sneak Peeks

Every week, we unveil "Sneak Peeks," a feature showcasing exclusive properties before they hit Rightmove and other platforms.

The Landlord Club

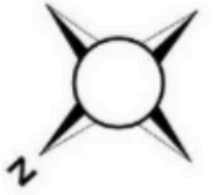
Join our Landlord Club for weekly updates on legislation, market trends, and our Letting Director's 'Investment Pick of the Week' for optimal ROI.

HTSPMD

Tune into 'How's The Solihull Property Market Dom' weekly for a quick, insightful snapshot of the market.

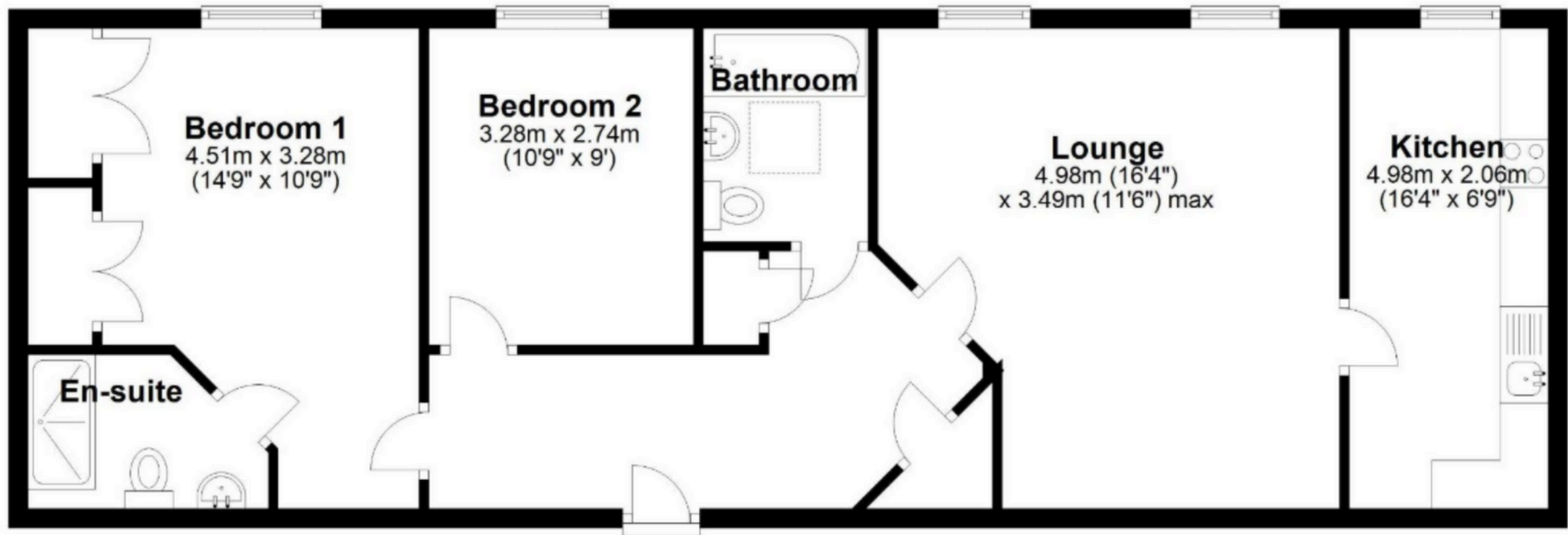
The Mortgage Update

Get weekly insights and the best deals with our Mortgage Update, your shortcut to navigating the complex mortgage landscape confidently.



First Floor

Approx. 78.4 sq. metres (844.0 sq. feet)



Total area: approx. 78.4 sq. metres (844.0 sq. feet)