

Need a Mortgage in principle  
to make offers? Call us now  
for quick assistance!  
**0121 775 0101**



Do you need to sell?  
Start your journey now!  
Call us we can help.  
**0121 775 0101**



**SCAN FOR MORE INFO**  
**SIZE** - 1133 Sq Ft  
**TENURE** - Freehold  
**COUNCIL TAX** - Solihull Metropolitan Borough Council - C  
**BROADBAND** - Upload Max 1000Mbps  
Download Max 1800Mbps  
**MOBILE** - EE O2 Vodafone  
**EPC** - D - 65  
**PARKING** - For at least 2 Cars  
**FLOODRISK** - Very Low  
**SERVICES** - Mains  
**COVENANTS** - N/A

## MEADOW GROVE

Solihull, B92

This extended semi-detached house offers a wonderful opportunity for families seeking a spacious and versatile living space. The property retains original character features with a contemporary feel and is ideally placed for good local schools, shops and transport links.

### FEATURES

- Extended Semi-Detached Family Home
- Dining/Sitting Room
- Lounge with French Door to Garden
- Fitted Kitchen/Dining Room
- Separate Utility Room
- Three Good Sized Double Bedrooms
- Fourth Single/Home Office
- Family Bathroom
- Private Rear Garden
- Driveway Parking
- Excellent Location

Are you an investor  
interested in expanding your  
portfolio?

**Call 0121 775 0101 to provide your investment criteria for alerts.**



SCAN TO **VIEW OUR**  
**WEEKLY FILMS &**  
**SUBSCRIBE**

### Sneak Peeks

Every week, we unveil "Sneak Peeks," a feature showcasing exclusive properties before they hit Rightmove and other platforms.

### The Landlord Club

Join our Landlord Club for weekly updates on legislation, market trends, and our Letting Director's 'Investment Pick of the Week' for optimal ROI.

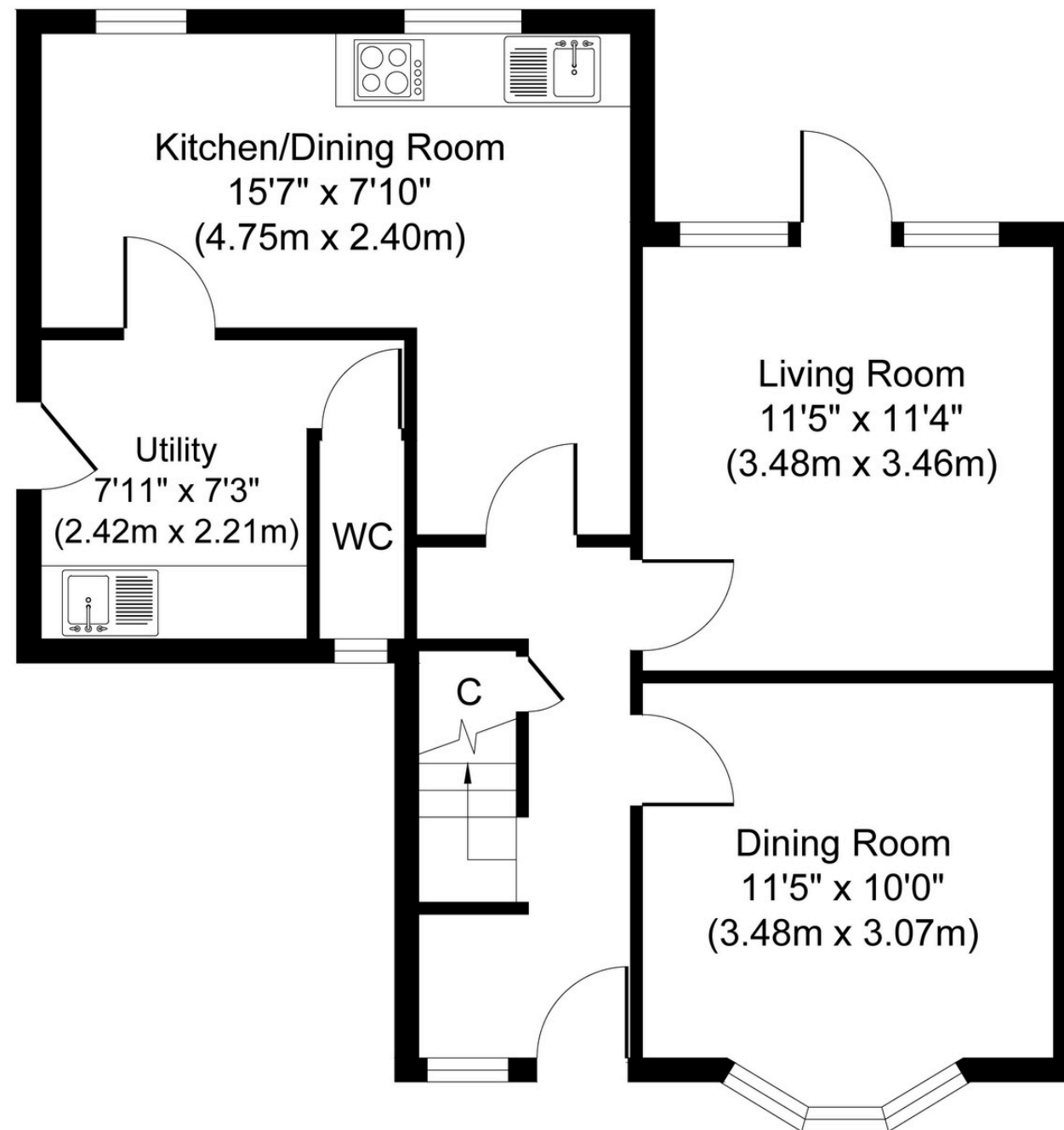
### HTSPMD

Tune into 'How's The Solihull Property Market Dom' weekly for a quick, insightful snapshot of the market.

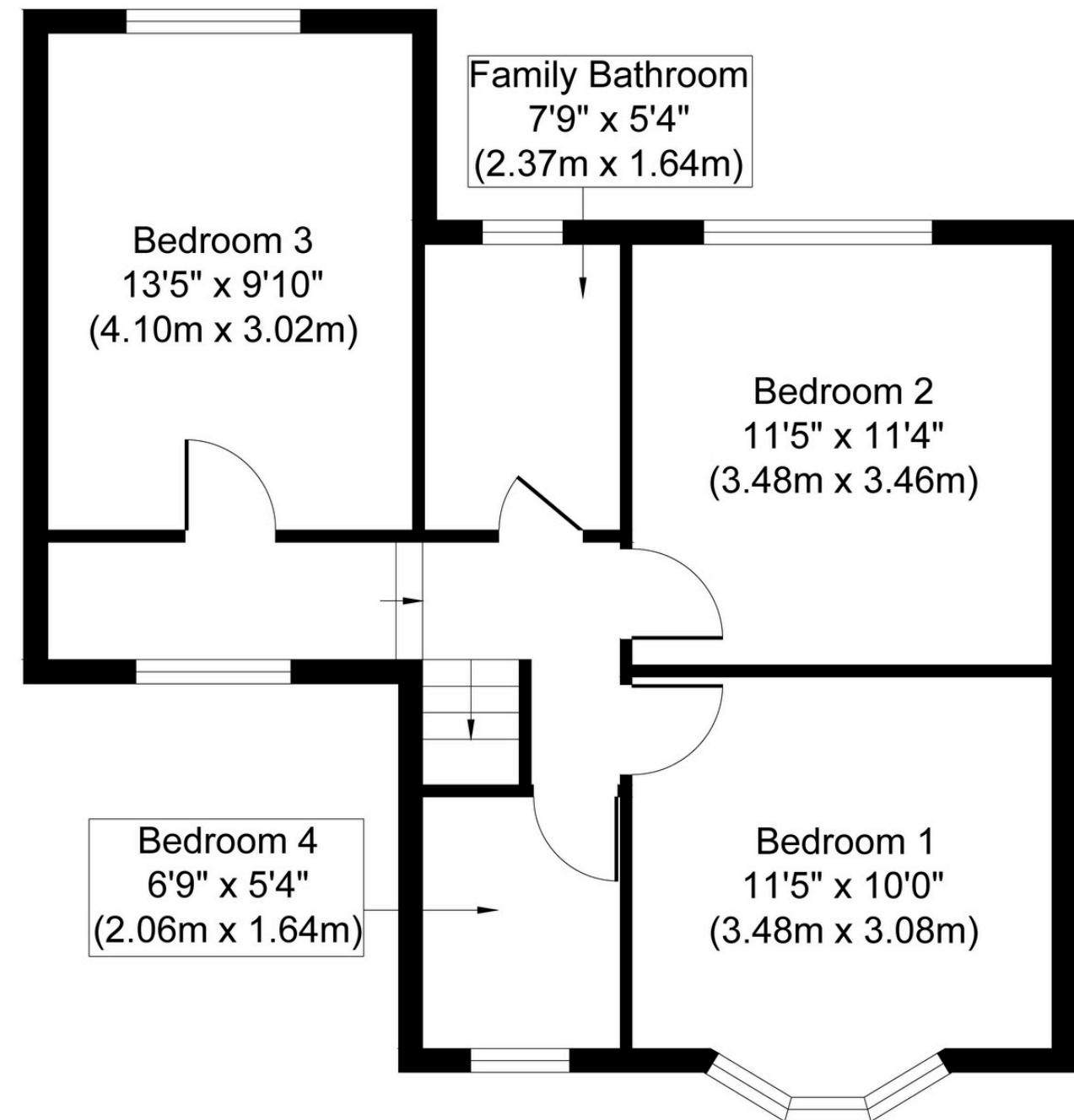
### The Mortgage Update

Get weekly insights and the best deals with our Mortgage Update, your shortcut to navigating the complex mortgage landscape confidently.





**First Floor**  
**Approximate Floor Area**  
**580 sq. ft**  
**(53.85 sq. m)**



**First Floor**  
**Approximate Floor Area**  
**553 sq. ft**  
**(51.34 sq. m)**

Whilst every attempt has been made to ensure the accuracy of the floor plan contained here, measurements of doors, windows, rooms and any other items are approximate and no responsibility is taken for any error, omission, or mis-statement. The measurements should not be relied upon for valuation, transaction and/or funding purposes. This plan is for illustrative purposes only and should be used as such by any prospective purchaser or tenant.

The services, systems and appliances shown have not been tested and no guarantee as to their operability or efficiency can be given.

Copyright V360 Ltd 2025 | [www.houseviz.com](http://www.houseviz.com)