

Need a Mortgage in principle
to make offers? Call us now
for quick assistance!
0121 775 0101



Do you need to sell?
Start your journey now!
Call us we can help.
01564 777 314



SCAN FOR MORE INFO
SIZE - 1057Sq Ft
TENURE - Freehold
COUNCIL TAX - Solihull Metropolitan Borough Council - D.
BROADBAND - Upload Max 220Mbps
Download Max 1800Mbps
MOBILE - EE Three O2 Vodafone
EPC - 55 - D
PARKING - Extensive Driveway Parking & Single Garage
FLOODRISK - Very Low
SERVICES - Mains
COVENANTS - N/A

Are you an investor
interested in expanding your
portfolio?

**Call 01564 777 314 to provide your
investment criteria for alerts.**

AYLESBURY ROAD

Hockley Heath, B94

Set in the desirable village of Hockley Heath, this charming three bedroom semi-detached cottage blends period features with modern living. Enjoying far reaching countryside views, spacious interiors and a stunning mature garden. This property offers an idyllic lifestyle with easy access to local amenities.

FEATURES

- Semi-Detached Cottage
- Three Characterful Bedrooms
- Spacious Kitchen/Diner
- Light Filled Conservatory
- Through Lounge with Log Burner
- Mature Garden With Countryside Views
- Self Contained Garden Lodge
- Original Fireplaces Retained
- Split Level First Floor Layout
- Peaceful Village Location



SCAN TO **VIEW OUR
WEEKLY FILMS &
SUBSCRIBE**

Sneak Peeks

Every week, we unveil "Sneak Peeks," a feature showcasing exclusive properties before they hit Rightmove and other platforms.

The Landlord Club

Join our Landlord Club for weekly updates on legislation, market trends, and our Letting Director's 'Investment Pick of the Week' for optimal ROI.

HTSPMD

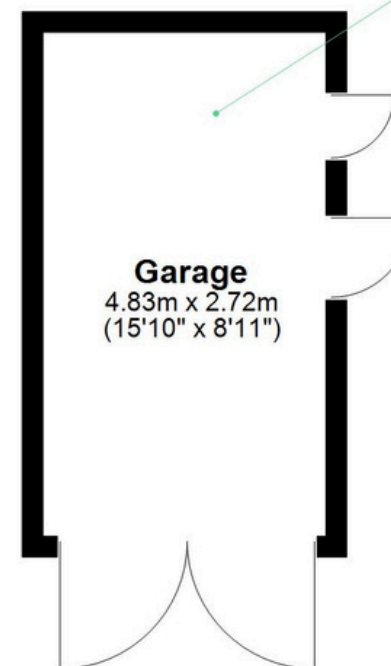
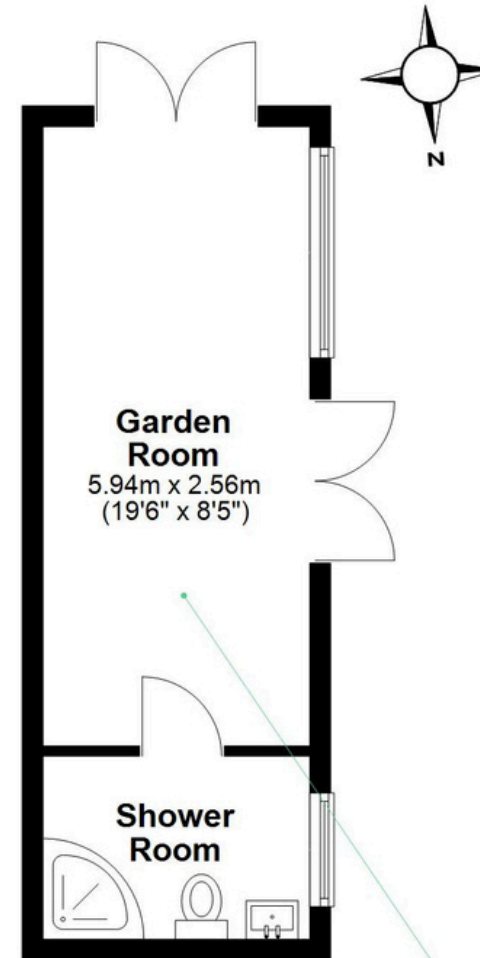
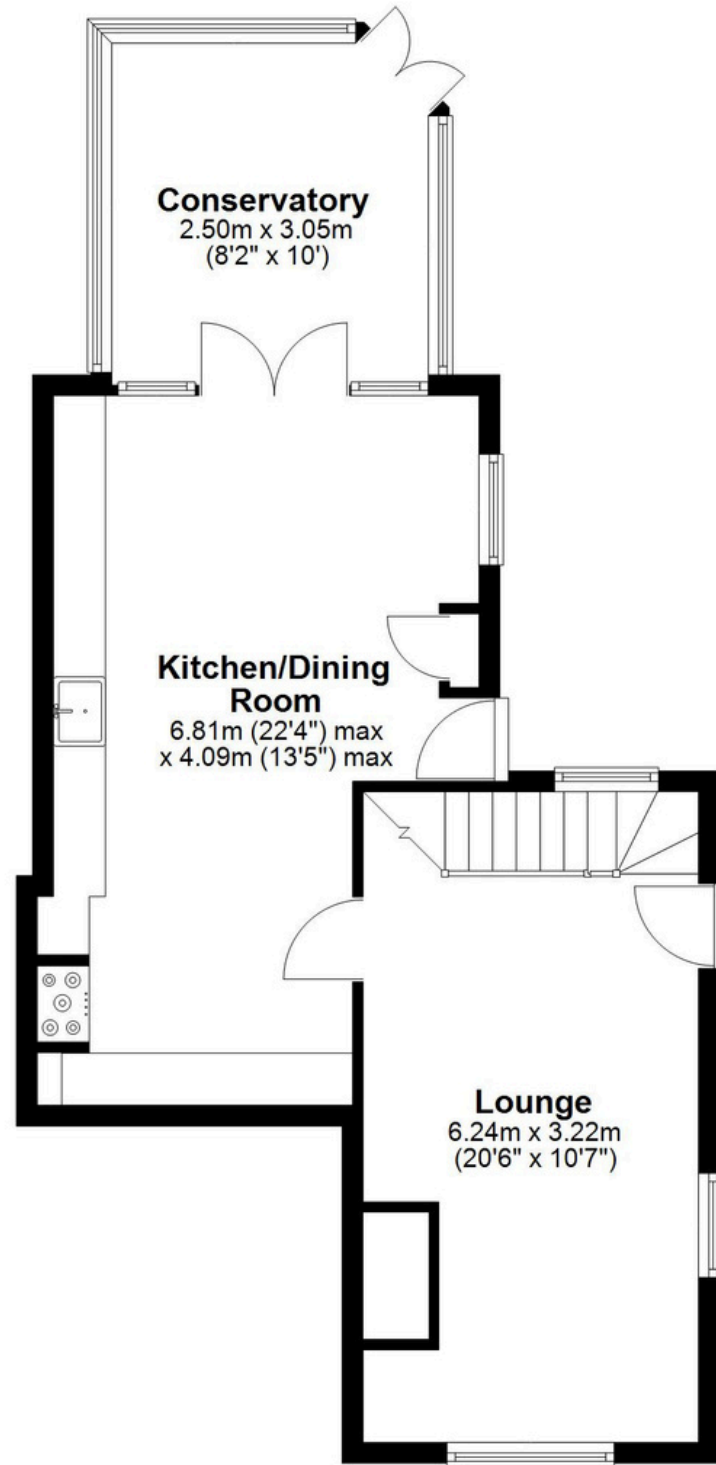
Tune into 'How's The Solihull Property Market Dom' weekly for a quick, insightful snapshot of the market.

The Mortgage Update

Get weekly insights and the best deals with our Mortgage Update, your shortcut to navigating the complex mortgage landscape confidently.

Ground Floor

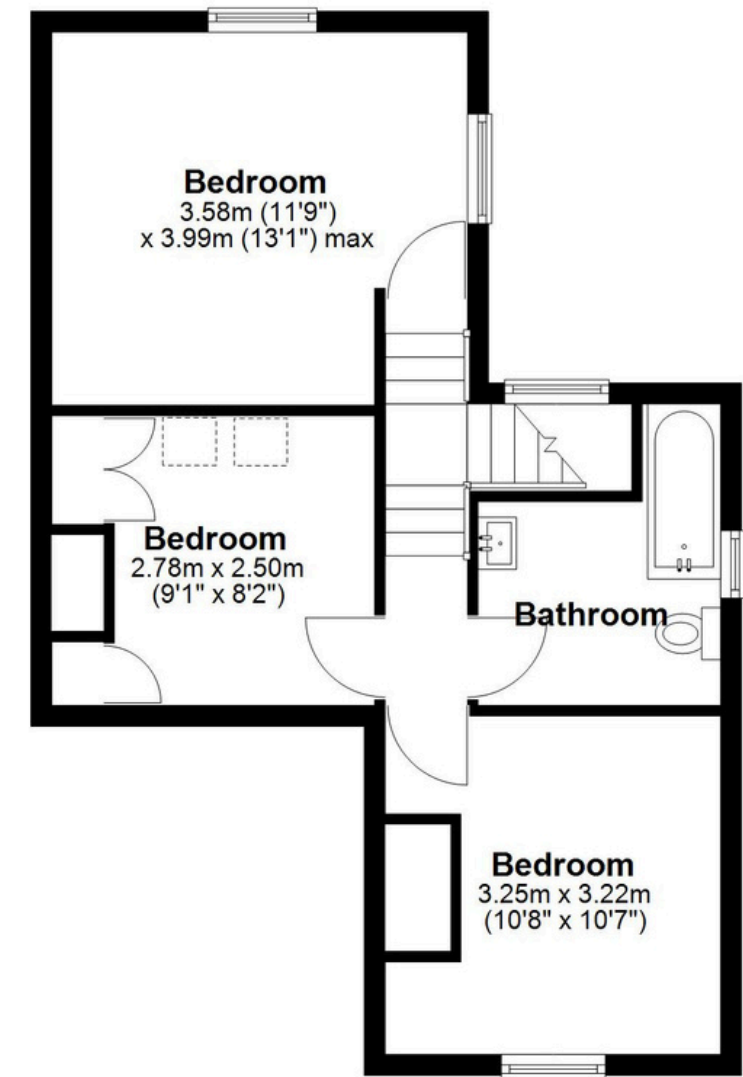
Main area: approx. 54.9 sq. metres (590.9 sq. feet)
Plus garage/garden room, approx. 33.1 sq. metres (356.1 sq. feet)



Main area: Approx. 98.1 sq. metres (1056.1 sq. feet)
Plus garage/garden room, approx. 33.1 sq. metres (356.1 sq. feet)

First Floor

Approx. 43.2 sq. metres (465.2 sq. feet)



This floor plan is for illustration purposes only, this is not intended to be a measured/scaled survey or comply with RICS guidelines. All measurements (including total floor area) openings, orientation and floor area are approximate. No details are guaranteed, they cannot be relied upon for any purpose and do not form part of any agreement. A party must rely upon its own inspection(s). No responsibility is taken for any error, omission, or mis-statement.
Plan produced using PlanUp.