

Need a Mortgage in principle
to make offers? Call us now
for quick assistance!
0121 775 0101



Do you need to sell?
Start your journey now!
Call us we can help.
0121 775 0101



SCAN FOR MORE INFO
SIZE - 1718 Sq Ft
TENURE - Freehold
COUNCIL TAX - Solihull Metropolitan Borough Council - F
BROADBAND - Upload Max 1000Mbps
Download Max 1800Mbps
MOBILE - 02
EPC - D - 62
PARKING - For at least 4 Cars
FLOODRISK - Very Low
SERVICES - Mains
COVENANTS - N/A

Are you an investor
interested in expanding your
portfolio?

**Call 0121 775 0101 to provide your
investment criteria for alerts.**

ROWTHORN DRIVE

Monkspath, B90

Situated on a quiet cul-de-sac, this four-bedroom detached family home offers a perfect blend of comfort and style. The property has been lovingly maintained, making it an ideal choice for families seeking a welcoming environment. With its desirable location and thoughtful layout, this detached house is a wonderful opportunity for those looking to settle in a peaceful yet convenient area of Solihull.

FEATURES

- Spacious Detached Family Home
- Quiet Cul-de-Sac Location
- Bright Lounge Leading into a Snug
- Conservatory Overlooking the Garden
- Fabulous Kitchen/Diner
- Large Principal Bedroom with En-Suite Shower Room
- Two Further Double Bedrooms & Fourth Single
- Family Bathroom
- Stunning Rear Garden with Summer House
- Driveway Parking & Single Garage



SCAN TO **VIEW OUR**
WEEKLY FILMS &
SUBSCRIBE

Sneak Peeks

Every week, we unveil "Sneak Peeks," a feature showcasing exclusive properties before they hit Rightmove and other platforms.

The Landlord Club

Join our Landlord Club for weekly updates on legislation, market trends, and our Letting Director's 'Investment Pick of the Week' for optimal ROI.

HTSPMD

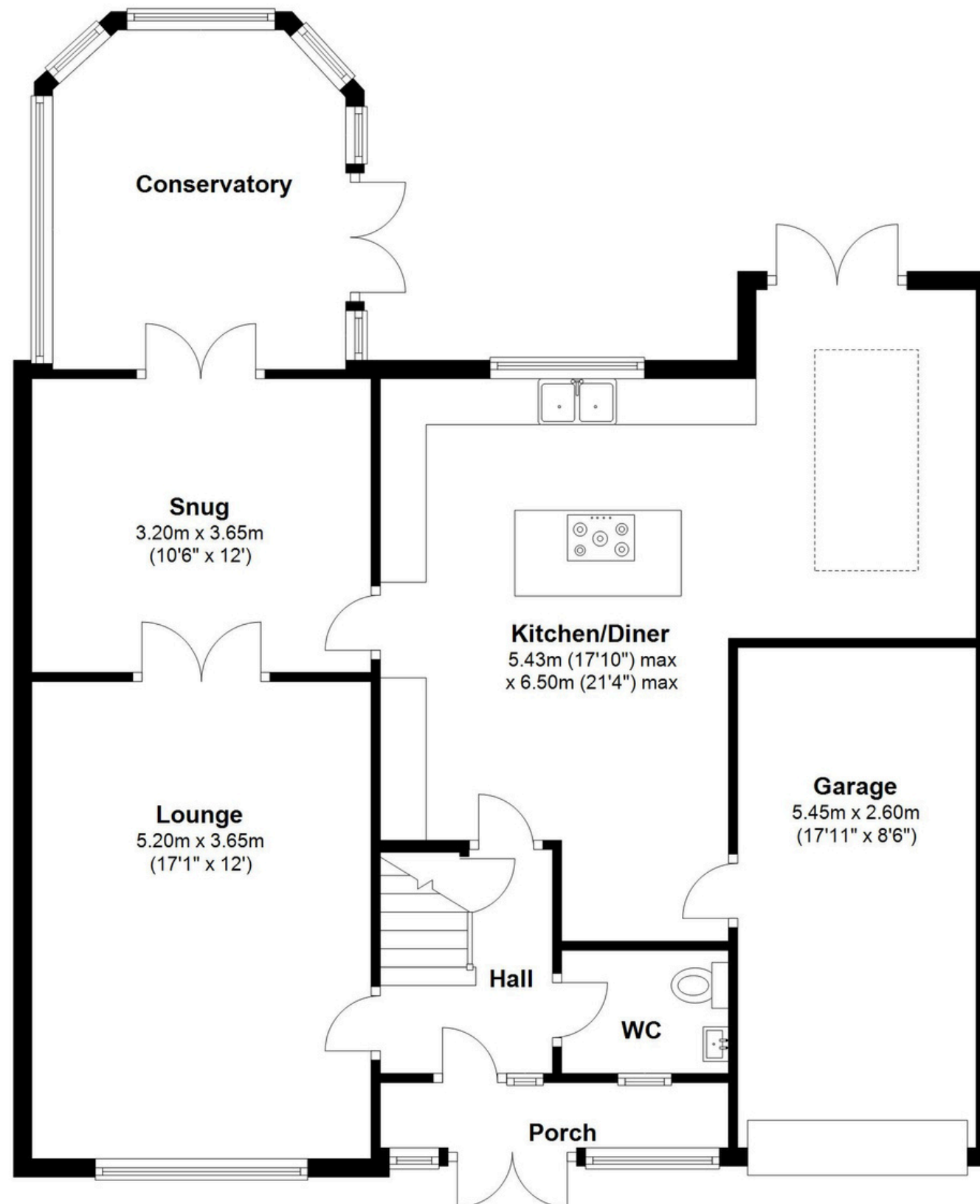
Tune into 'How's The Solihull Property Market Dom' weekly for a quick, insightful snapshot of the market.

The Mortgage Update

Get weekly insights and the best deals with our Mortgage Update, your shortcut to navigating the complex mortgage landscape confidently.

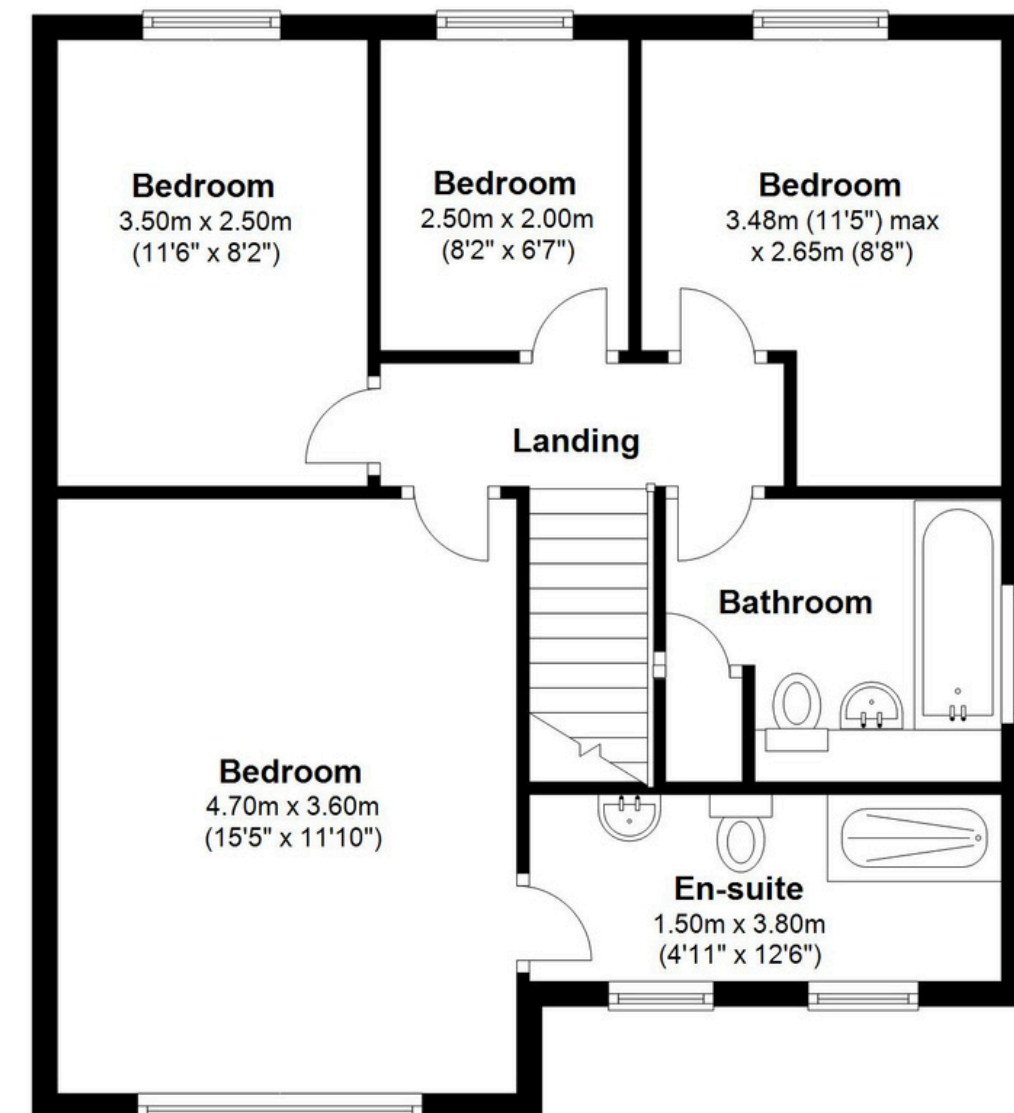
Ground Floor

Approx. 100.7 sq. metres (1083.9 sq. feet)



First Floor

Approx. 58.9 sq. metres (634.3 sq. feet)



Total area: approx. 159.6 sq. metres (1718.3 sq. feet)

For illustration only, dimensions approximate.
Plan produced using PlanUp.