

Need a Mortgage in principle
to make offers? Call us now
for quick assistance!
0121 775 0101



Do you need to sell?
Start your journey now!
Call us we can help.
0121 775 0101



SCAN FOR MORE INFO
SIZE - 538 Sq Ft
TENURE - Leasehold
SERVICE CHARGE - £145 PCM
GROUND RENT - Included In Service Charge
COUNCIL TAX - Solihull Metropolitan Borough Council - C
BROADBAND - Upload Max 220Mbps
Download Max 1800Mbps
MOBILE - EE, Three, O2 Voda,phone
EPC - C - 71
PARKING - One Allocated Parking Space & Single Garage
FLOODRISK - Very Low
SERVICES - Mains
COVENANTS - Yes, Speak To Agent.

Are you an investor
interested in expanding your
portfolio?

Call 0121 775 0101 to provide your
investment criteria for alerts.

CATHERINES CLOSE

Offers in the region of £190,000

Located in the desirable village of Catherine-De-Barnes, this beautifully presented first floor apartment offers modern living in a peaceful, semi-rural setting. Ideal for first time buyers, investors or those looking to downsize, this property combines practicality with excellent transport links.

FEATURES

- Well Presented First Floor Apartment
- One Spacious Double Bedroom
- Modern Fitted Kitchen With Appliances
- Separate Utility Room
- Bright Dual Aspect Lounge/Diner
- Contemporary Shower Room
- One Allocated Parking Space & Single Garage
- Stunning Communal Garden Spaces
- Excellent Access To Airport And NEC



SCAN TO **VIEW OUR**
WEEKLY FILMS &
SUBSCRIBE

Sneak Peeks

Every week, we unveil "Sneak Peeks," a feature showcasing exclusive properties before they hit Rightmove and other platforms.

The Landlord Club

Join our Landlord Club for weekly updates on legislation, market trends, and our Letting Director's 'Investment Pick of the Week' for optimal ROI.

HTSPMD

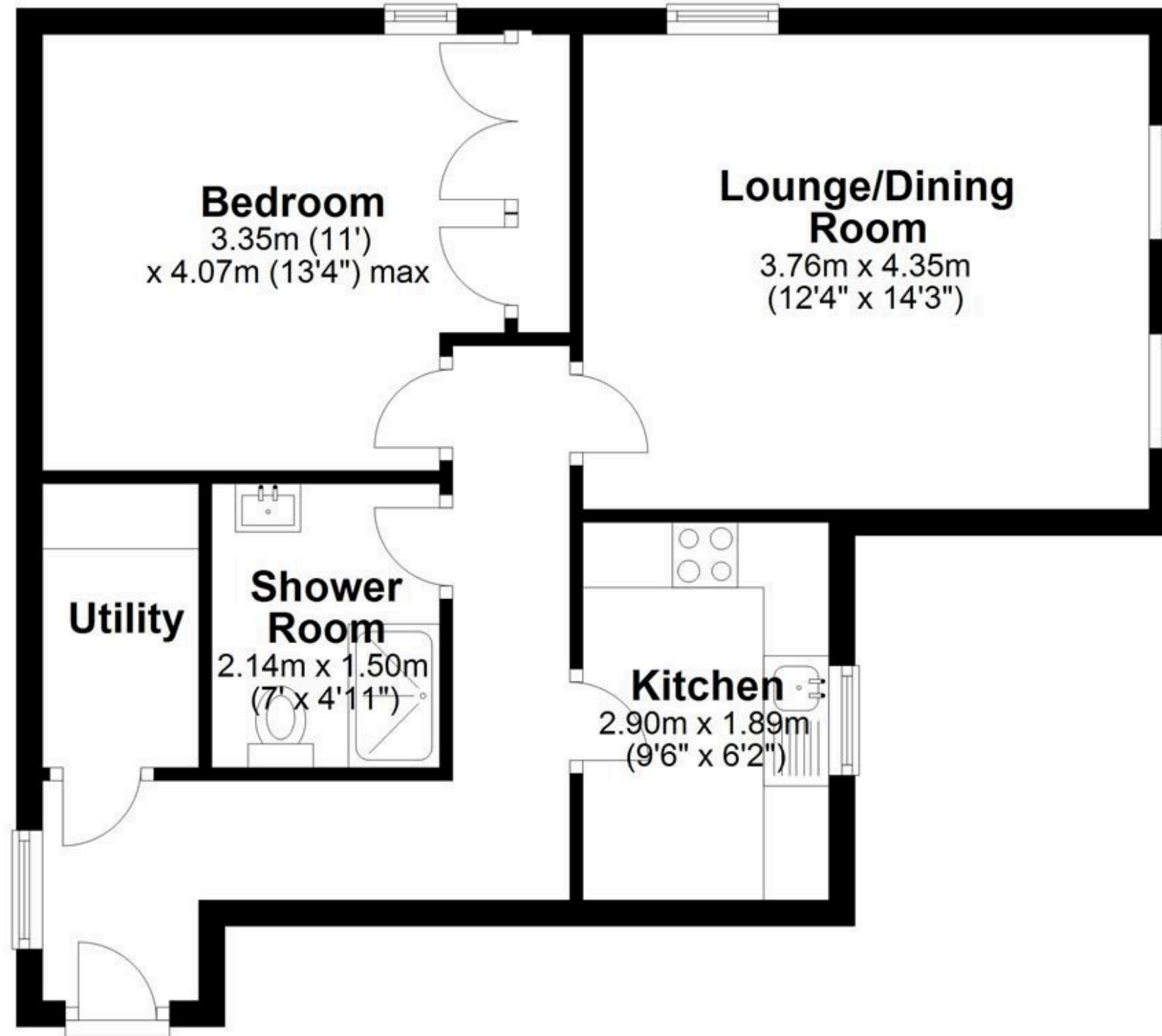
Tune into 'How's The Solihull Property Market Dom' weekly for a quick, insightful snapshot of the market.

The Mortgage Update

Get weekly insights and the best deals with our Mortgage Update, your shortcut to navigating the complex mortgage landscape confidently.

Floor Plan

Approx. 50.0 sq. metres (538.0 sq. feet)



Total area: approx. 50.0 sq. metres (538.0 sq. feet)

This floor plan is for illustration purposes only, this is not intended to be a measured/scaled survey or comply with RICS guidelines. All measurements (including total floor area) openings, orientation and floor area are approximate. No details are guaranteed, they cannot be relied upon for any purpose and do not form part of any agreement. A party must rely upon its own inspection(s). No responsibility is taken for any error, omission, or mis-statement.

Plan produced using PlanUp.