

Need a Mortgage in principle
to make offers? Call us now
for quick assistance!
0121 775 0101



Do you need to sell?
Start your journey now!
Call us we can help.
01564 777 314



SCAN FOR MORE INFO
SIZE - 1002 Sq Ft
TENURE - Freehold
COUNCIL TAX - Solihull Metropolitan Borough Council - E
BROADBAND - Upload Max 220Mbps
Download Max 1800Mbps
EPC - C - 69
PARKING - 2 Parking Spaces
FLOODRISK - Very Low
SERVICES - Mains
COVENANTS - N/A

SHELFIELD CLOSE
Hockley Heath, B94

Situated in the picturesque and ever-popular village of Hockley Heath, this delightful three-bedroom semi-detached house in a highly sought-after location, with the added benefit of no upward chain. This lovely home is ideal for those seeking village living with excellent transport links and local amenities close by.

FEATURES

- Modern Semi-Detached House Located in Heart of Hockley Heath Village
- No Upward Chain
- Fully Fitted Breakfast Kitchen
- Lounge with Conservatory
- Principal Bedroom with En-Suite Shower Room
- Two Further Bedrooms
- Family Bathroom
- Low Maintenance Rear Garden
- Walking Distance to Local Amenities
- Tudor Grange Academy Catchment

Are you an investor
interested in expanding your
portfolio?

**Call 01564 777 314 to provide your
investment criteria for alerts.**



SCAN TO **VIEW OUR**
WEEKLY FILMS &
SUBSCRIBE

Sneak Peeks

Every week, we unveil "Sneak Peeks," a feature showcasing exclusive properties before they hit Rightmove and other platforms.

The Landlord Club

Join our Landlord Club for weekly updates on legislation, market trends, and our Letting Director's 'Investment Pick of the Week' for optimal ROI.

HTSPMD

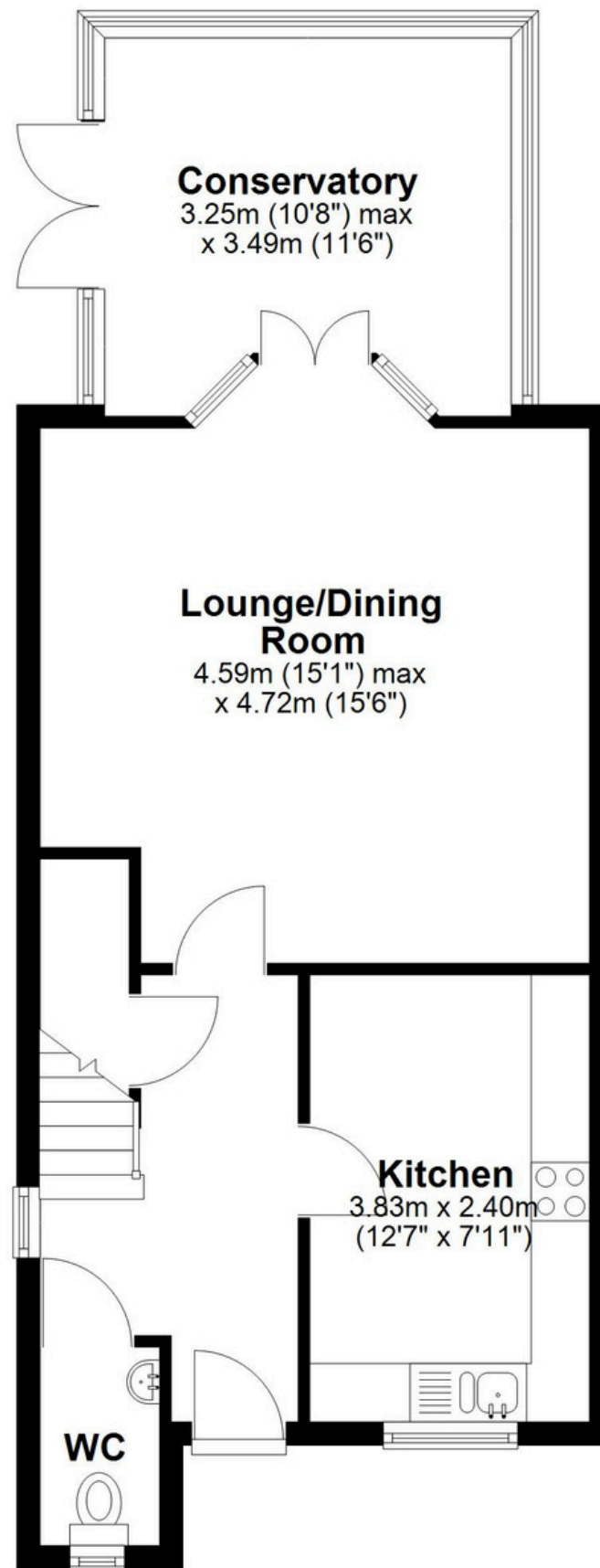
Tune into 'How's The Solihull Property Market Dom' weekly for a quick, insightful snapshot of the market.

The Mortgage Update

Get weekly insights and the best deals with our Mortgage Update, your shortcut to navigating the complex mortgage landscape confidently.

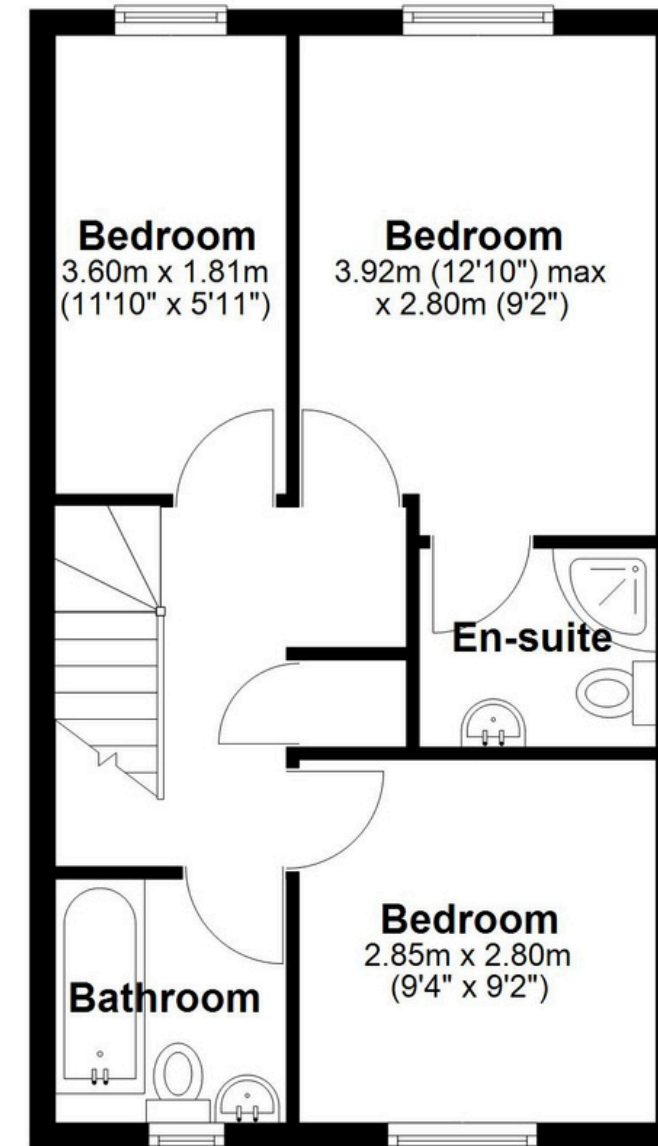
Ground Floor

Approx. 53.0 sq. metres (570.6 sq. feet)



First Floor

Approx. 40.1 sq. metres (432.1 sq. feet)



Total area: approx. 93.2 sq. metres (1002.7 sq. feet)

This floor plan is for illustration purposes only, this is not intended to be a measured/scaled survey or comply with RICS guidelines. All measurements (including total floor area) openings, orientation and floor area are approximate. No details are guaranteed, they cannot be relied upon for any purpose and do not form part of any agreement. A party must rely upon its own inspection(s). No responsibility is taken for any error, omission, or mis-statement.

Plan produced using PlanUp.