

Need a Mortgage in principle
to make offers? Call us now
for quick assistance!
0121 775 0101

DM&Co.
SALES & LETTINGS



Do you need to sell?
Start your journey now!
Call us we can help.
01564 777 314

DM&Co.
SALES & LETTINGS



SCAN FOR MORE INFO
SIZE - 2460 Sq Ft
TENURE - Freehold
COUNCIL TAX - Stratford District Council - F
BROADBAND - Upload Max 220 Mbps
Download Max 1800 Mbps
MOBILE - O2
EPC - TBC
PARKING - Driveway Parking for 5 Cars & Double Garage
FLOODRISK - Very Low
SERVICES - Mains
COVENANTS - N/A

Are you an investor
interested in expanding your
portfolio?

Call **01564 777 314** to provide your
investment criteria for alerts.

BROAD LANE
Tanworth in Arden, B94

An impressive detached house on Broad Lane offering a perfect blend of comfort and style. Built in 1960, the property boasts a generous layout, making it an ideal family home. With its blend of spacious living areas, practical features, and potential for further development, this home is a wonderful opportunity for those seeking a peaceful yet connected lifestyle in the heart of Tanworth-In-Arden.

FEATURES

- Detached Three Bedroom Family Home
- Bright Sunny Lounge
- Cosy Dining Room
- Breakfast Kitchen
- Large Conservatory
- Play Room & Snug
- Loft Room
- Superb South Facing Rear Garden
- Large Driveway & Double Garage
- Potential to Extend (STPP)



SCAN TO **VIEW** OUR
WEEKLY FILMS &
SUBSCRIBE

Sneak Peeks

Every week, we unveil "Sneak Peeks," a feature showcasing exclusive properties before they hit Rightmove and other platforms.

The Landlord Club

Join our Landlord Club for weekly updates on legislation, market trends, and our Letting Director's 'Investment Pick of the Week' for optimal ROI.

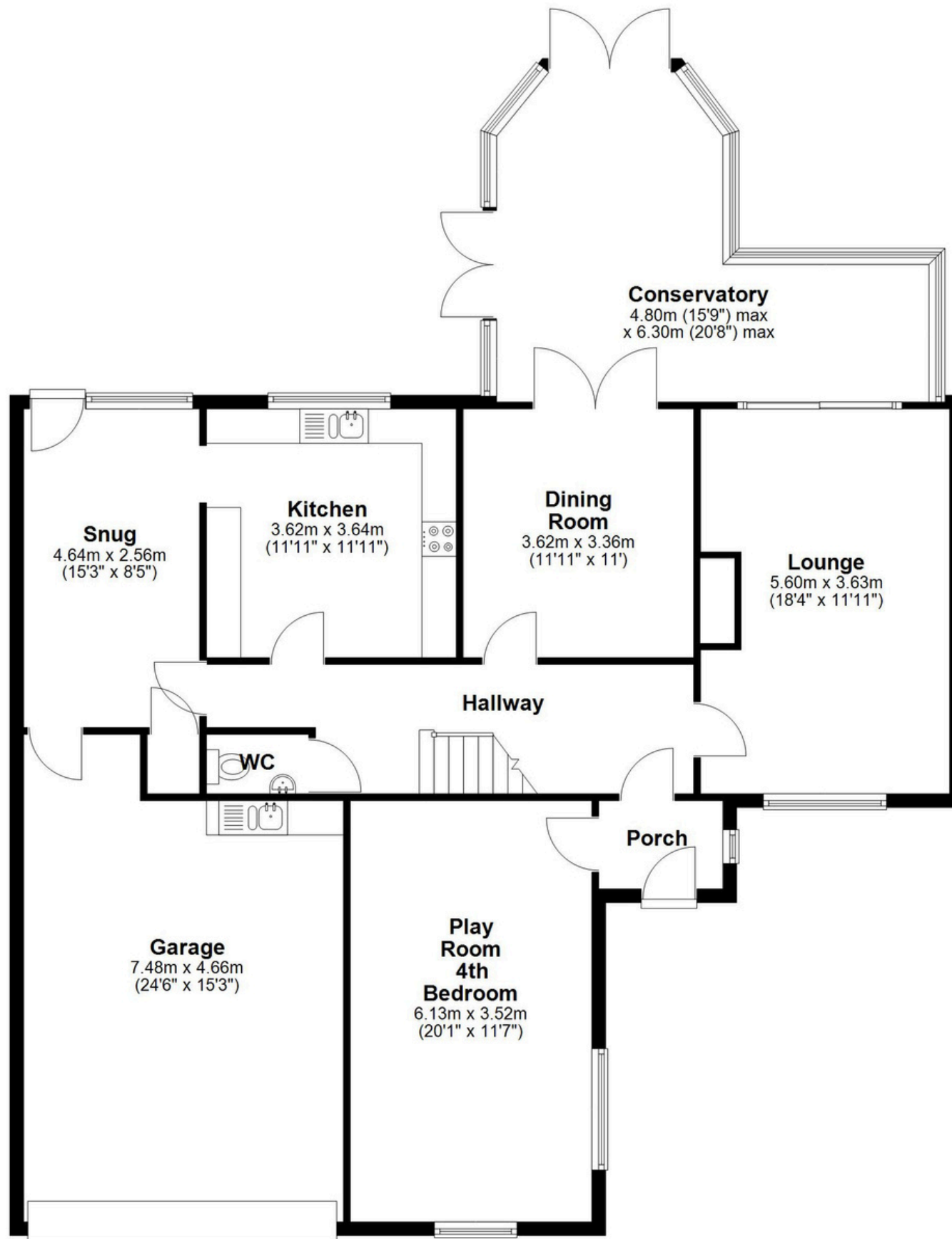
HTSPMD

Tune into 'How's The Solihull Property Market Dom' weekly for a quick, insightful snapshot of the market.

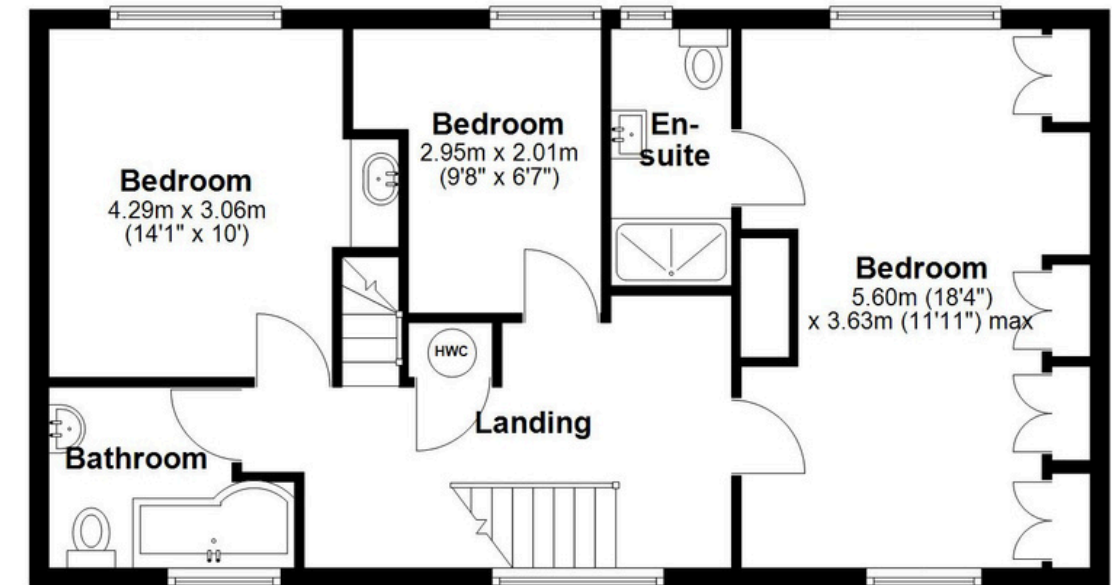
The Mortgage Update

Get weekly insights and the best deals with our Mortgage Update, your shortcut to navigating the complex mortgage landscape confidently.

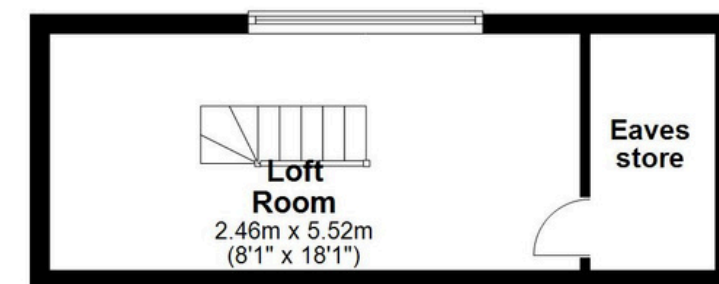
Ground Floor
Approx. 152.8 sq. metres (1644.5 sq. feet)



First Floor
Approx. 62.3 sq. metres (670.3 sq. feet)



Second Floor
Approx. 13.6 sq. metres (146.1 sq. feet)



Total area: approx. 228.6 sq. metres (2460.9 sq. feet)

This floor plan is for illustration purposes only, this is not intended to be a measured/scaled survey or comply with RICS guidelines. All measurements (including total floor area) openings, orientation and floor area are approximate. No details are guaranteed, they cannot be relied upon for any purpose and do not form part of any agreement. A party must rely upon its own inspection(s). No responsibility is taken for any error, omission, or mis-statement.

Plan produced using PlanUp.